

GCC1 Antibody (C-term)
Affinity Purified Rabbit Polyclonal Antibody (Pab)
Catalog # AP12984B**Specification**

GCC1 Antibody (C-term) - Product Information

Application	WB, IHC-P,E
Primary Accession	O96CN9
Other Accession	NP_078799.2
Reactivity	Human
Host	Rabbit
Clonality	Polyclonal
Isotype	Rabbit IgG
Calculated MW	87811
Antigen Region	671-700

GCC1 Antibody (C-term) - Additional Information**Gene ID** 79571**Other Names**

GRIP and coiled-coil domain-containing protein 1, Golgi coiled-coil protein 1, GCC1

Target/Specificity

This GCC1 antibody is generated from rabbits immunized with a KLH conjugated synthetic peptide between 671-700 amino acids from the C-terminal region of human GCC1.

Dilution

WB~~1:1000

IHC-P~~1:10~50

Format

Purified polyclonal antibody supplied in PBS with 0.09% (W/V) sodium azide. This antibody is purified through a protein A column, followed by peptide affinity purification.

Storage

Maintain refrigerated at 2-8°C for up to 2 weeks. For long term storage store at -20°C in small aliquots to prevent freeze-thaw cycles.

Precautions

GCC1 Antibody (C-term) is for research use only and not for use in diagnostic or therapeutic procedures.

GCC1 Antibody (C-term) - Protein Information**Name** GCC1**Function** Probably involved in maintaining Golgi structure.

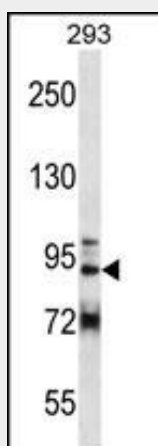
Cellular Location

Cytoplasm. Golgi apparatus membrane; Peripheral membrane protein

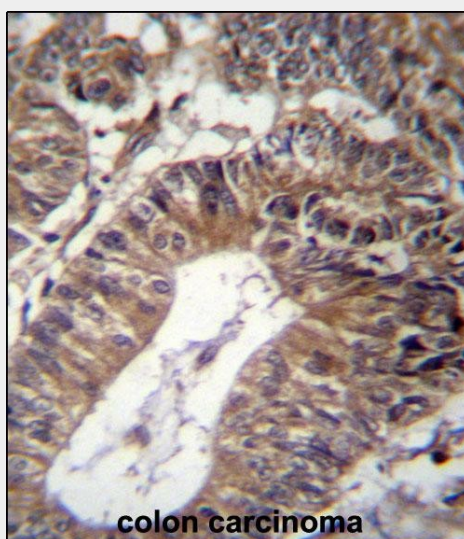
GCC1 Antibody (C-term) - Protocols

Provided below are standard protocols that you may find useful for product applications.

- [Western Blot](#)
- [Blocking Peptides](#)
- [Dot Blot](#)
- [Immunohistochemistry](#)
- [Immunofluorescence](#)
- [Immunoprecipitation](#)
- [Flow Cytometry](#)
- [Cell Culture](#)

GCC1 Antibody (C-term) - Images

GCC1 Antibody (C-term) (Cat. #AP12984b) western blot analysis in 293 cell line lysates (35ug/lane). This demonstrates the GCC1 antibody detected the GCC1 protein (arrow).



GCC1 Antibody (C-term) (Cat. #AP12984b) immunohistochemistry analysis in formalin fixed and

paraffin embedded human colon carcinoma followed by peroxidase conjugation of the secondary antibody and DAB staining. This data demonstrates the use of GCC1 Antibody (C-term) for immunohistochemistry. Clinical relevance has not been evaluated.

GCC1 Antibody (C-term) - Background

The protein encoded by this gene is a peripheral membrane protein. It is sensitive to brefeldin A. This encoded protein contains a GRIP domain which is thought to be used in targeting. It may play a role in the organization of trans-Golgi network subcompartment involved with membrane transport. [provided by RefSeq].

GCC1 Antibody (C-term) - References

Lieu, Z.Z., et al. Mol. Biol. Cell 18(12):4979-4991(2007)
Lim, J., et al. Cell 125(4):801-814(2006)
Luke, M.R., et al. Biochem. J. 388 (PT 3), 835-841 (2005) :
Luke, M.R., et al. J. Biol. Chem. 278(6):4216-4226(2003)
Kjer-Nielsen, L., et al. Curr. Biol. 9(7):385-388(1999)