

**CATSPER1 Antibody (N-term)**  
**Affinity Purified Rabbit Polyclonal Antibody (Pab)**  
**Catalog # AP12995a**

**Specification**

---

**CATSPER1 Antibody (N-term) - Product Information**

Application	WB,E
Primary Accession	<a href="#">Q8NEC5</a>
Other Accession	<a href="#">NP_444282.3</a>
Reactivity	Human
Host	Rabbit
Clonality	Polyclonal
Isotype	Rabbit IgG
Antigen Region	36-65

**CATSPER1 Antibody (N-term) - Additional Information**

**Gene ID** 117144

**Other Names**

Cation channel sperm-associated protein 1, CatSper1, hCatSper, CATSPER1

**Target/Specificity**

This CATSPER1 antibody is generated from rabbits immunized with a KLH conjugated synthetic peptide between 36-65 amino acids from the N-terminal region of human CATSPER1.

**Dilution**

WB~~1:1000

E~~Use at an assay dependent concentration.

**Format**

Purified polyclonal antibody supplied in PBS with 0.09% (W/V) sodium azide. This antibody is purified through a protein A column, followed by peptide affinity purification.

**Storage**

Maintain refrigerated at 2-8°C for up to 2 weeks. For long term storage store at -20°C in small aliquots to prevent freeze-thaw cycles.

**Precautions**

CATSPER1 Antibody (N-term) is for research use only and not for use in diagnostic or therapeutic procedures.

**CATSPER1 Antibody (N-term) - Protein Information**

**Name** CATSPER1

**Function** Pore-forming subunit of the CatSper complex, a sperm-specific voltage-gated calcium channel that plays a central role in calcium- dependent physiological responses essential for

successful fertilization, such as sperm hyperactivation, acrosome reaction and chemotaxis towards the oocyte.

**Cellular Location**

Cell projection, cilium, flagellum membrane; Multi-pass membrane protein {ECO:0000250|UniProtKB:Q91ZR5}. Note=Specifically located in the principal piece of the sperm tail.

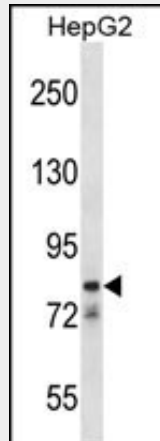
**Tissue Location**

Testis-specific.

**CATSPER1 Antibody (N-term) - Protocols**

Provided below are standard protocols that you may find useful for product applications.

- [Western Blot](#)
- [Blocking Peptides](#)
- [Dot Blot](#)
- [Immunohistochemistry](#)
- [Immunofluorescence](#)
- [Immunoprecipitation](#)
- [Flow Cytometry](#)
- [Cell Culture](#)

**CATSPER1 Antibody (N-term) - Images**

CATSPER1 Antibody (N-term) (Cat. #AP12995a) western blot analysis in HepG2 cell line lysates (35ug/lane). This demonstrates the CATSPER1 antibody detected the CATSPER1 protein (arrow).

**CATSPER1 Antibody (N-term) - Background**

Calcium ions play a primary role in the regulation of sperm motility. This gene belongs to a family of putative cation channels that are specific to spermatozoa and localize to the flagellum. The protein family features a single repeat with six membrane-spanning segments and a predicted calcium-selective pore region.

**CATSPER1 Antibody (N-term) - References**

Li, H., et al. Fertil. Steril. 92(3):1141-1146(2009)  
Avenarius, M.R., et al. Am. J. Hum. Genet. 84(4):505-510(2009)  
Zhang, D., et al. J. Biol. Chem. 281(31):22332-22341(2006)  
Li, H.G., et al. Asian J. Androl. 8(3):301-306(2006)  
Clapham, D.E., et al. Pharmacol. Rev. 57(4):451-454(2005)