

ARHGAP22 Antibody (C-term)
Affinity Purified Rabbit Polyclonal Antibody (Pab)
Catalog # AP13013b

Specification

ARHGAP22 Antibody (C-term) - Product Information

Application	WB,E
Primary Accession	Q7Z5H3
Other Accession	NP_067049.2
Reactivity	Human
Host	Rabbit
Clonality	Polyclonal
Isotype	Rabbit IgG
Calculated MW	76779
Antigen Region	604-633

ARHGAP22 Antibody (C-term) - Additional Information

Gene ID 58504

Other Names

Rho GTPase-activating protein 22, Rho-type GTPase-activating protein 22, ARHGAP22, RHOGAP2

Target/Specificity

This ARHGAP22 antibody is generated from rabbits immunized with a KLH conjugated synthetic peptide between 604-633 amino acids from the C-terminal region of human ARHGAP22.

Dilution

WB~~1:1000

Format

Purified polyclonal antibody supplied in PBS with 0.09% (W/V) sodium azide. This antibody is purified through a protein A column, followed by peptide affinity purification.

Storage

Maintain refrigerated at 2-8°C for up to 2 weeks. For long term storage store at -20°C in small aliquots to prevent freeze-thaw cycles.

Precautions

ARHGAP22 Antibody (C-term) is for research use only and not for use in diagnostic or therapeutic procedures.

ARHGAP22 Antibody (C-term) - Protein Information

Name ARHGAP22

Synonyms RHOGAP2

Function Rho GTPase-activating protein involved in the signal transduction pathway that regulates endothelial cell capillary tube formation during angiogenesis. Acts as a GTPase activator for the RAC1 by converting it to an inactive GDP-bound state. Inhibits RAC1- dependent lamellipodia formation. May also play a role in transcription regulation via its interaction with VEZF1, by regulating activity of the endothelin-1 (EDN1) promoter (By similarity).

Cellular Location

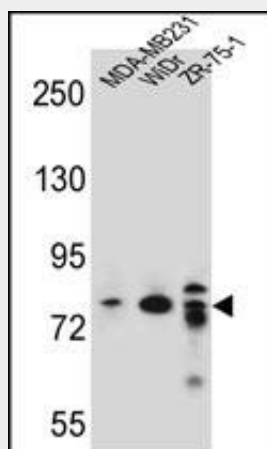
Cytoplasm. Nucleus. Note=Mainly cytoplasmic. Some fraction is nuclear (By similarity)

ARHGAP22 Antibody (C-term) - Protocols

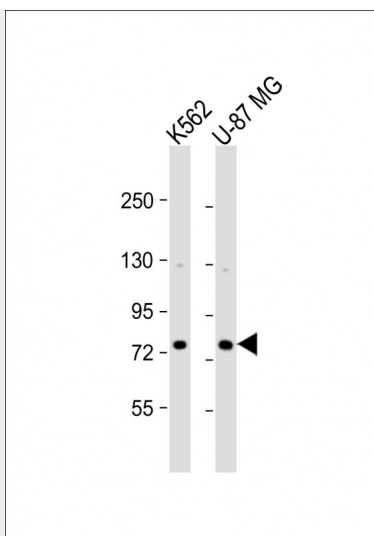
Provided below are standard protocols that you may find useful for product applications.

- [Western Blot](#)
- [Blocking Peptides](#)
- [Dot Blot](#)
- [Immunohistochemistry](#)
- [Immunofluorescence](#)
- [Immunoprecipitation](#)
- [Flow Cytometry](#)
- [Cell Culture](#)

ARHGAP22 Antibody (C-term) - Images



ARHGAP22 Antibody (C-term) (Cat. #AP13013b) western blot analysis in MDA-MB231, WiDr, ZR-75-1 cell line lysates (35ug/lane). This demonstrates the ARHGAP22 antibody detected the ARHGAP22 protein (arrow).



All lanes : Anti-ARHGAP22 Antibody (C-term) at 1:1000 dilution Lane 1: K562 whole cell lysate
Lane 2: U-87 MG whole cell lysate Lysates/proteins at 20 µg per lane. Secondary Goat Anti-Rabbit IgG, (H+L), Peroxidase conjugated at 1/10000 dilution. Predicted band size : 77 kDa
Blocking/Dilution buffer: 5% NFDM/TBST.

ARHGAP22 Antibody (C-term) - Background

ARHGAPs, such as ARHGAP22, encode negative regulators of Rho GTPases (see ARHA; MIM 165390), which are implicated in actin remodeling, cell polarity, and cell migration (Katoh and Katoh, 2004 [PubMed 15254788]).

ARHGAP22 Antibody (C-term) - References

Rose, J.E., et al. Mol. Med. 16 (7-8), 247-253 (2010) :
Dick, D.M., et al. Mol. Psychiatry (2010) In press :
Grupe, A., et al. Am. J. Hum. Genet. 78(1):78-88(2006)
Katoh, M., et al. Int. J. Mol. Med. 14(2):333-338(2004)