

ODF2L Antibody (C-term)
Affinity Purified Rabbit Polyclonal Antibody (Pab)
Catalog # AP13014b**Specification**

ODF2L Antibody (C-term) - Product Information

Application	IHC-P, WB,E
Primary Accession	O9ULJ1
Other Accession	Q0VBY1 , NP_001171694.1 , NP_065780.2
Reactivity	Human
Predicted	Bovine
Host	Rabbit
Clonality	Polyclonal
Isotype	Rabbit IgG
Calculated MW	73728
Antigen Region	543-572

ODF2L Antibody (C-term) - Additional Information**Gene ID** 57489**Other Names**

Outer dense fiber protein 2-like, ODF2L, KIAA1229

Target/Specificity

This ODF2L antibody is generated from rabbits immunized with a KLH conjugated synthetic peptide between 543-572 amino acids from the C-terminal region of human ODF2L.

Dilution

IHC-P~~1:10~50

WB~~1:1000

E~~Use at an assay dependent concentration.

Format

Purified polyclonal antibody supplied in PBS with 0.09% (W/V) sodium azide. This antibody is purified through a protein A column, followed by peptide affinity purification.

Storage

Maintain refrigerated at 2-8°C for up to 2 weeks. For long term storage store at -20°C in small aliquots to prevent freeze-thaw cycles.

Precautions

ODF2L Antibody (C-term) is for research use only and not for use in diagnostic or therapeutic procedures.

ODF2L Antibody (C-term) - Protein Information**Name** ODF2L ([HGNC:29225](#))

Function Acts as a suppressor of ciliogenesis, specifically, the initiation of ciliogenesis.

Cellular Location

Cytoplasm, cytoskeleton, microtubule organizing center, centrosome. Cytoplasm, cytoskeleton, microtubule organizing center, centrosome, centriole. Cytoplasm, cytoskeleton, microtubule organizing center, centrosome, centriolar satellite. Cytoplasm, cytoskeleton, cilium basal body. Note=Localizes to centrioles in proliferative cells and basal bodies in ciliated cells (PubMed:17485331). Disappears during ciliogenesis but reappears, albeit at a lower levels once ciliogenesis has completed (PubMed:28775150) [Isoform 6]: Cytoplasm, cytoskeleton, microtubule organizing center, centrosome, centriolar satellite. Cytoplasm, cytoskeleton, microtubule organizing center, centrosome, centriole Note=Disappears during ciliogenesis but reappears, albeit at a lower levels once ciliogenesis has completed.

Tissue Location

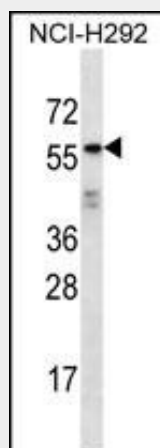
Mainly expressed in trachea and testis. Not detected in bone marrow, bladder, leukocytes. Only weakly detected in tongue, stomach, brain and ovaries.

ODF2L Antibody (C-term) - Protocols

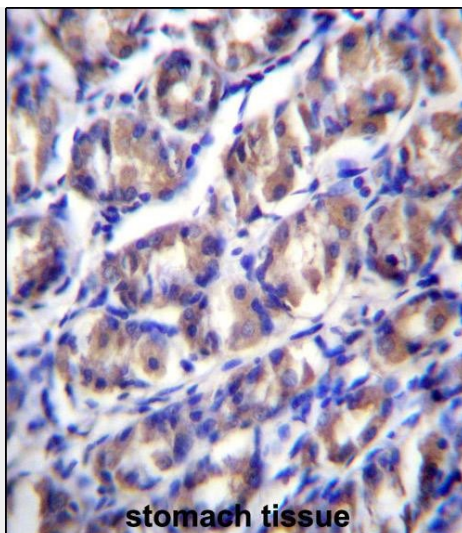
Provided below are standard protocols that you may find useful for product applications.

- [Western Blot](#)
- [Blocking Peptides](#)
- [Dot Blot](#)
- [Immunohistochemistry](#)
- [Immunofluorescence](#)
- [Immunoprecipitation](#)
- [Flow Cytometry](#)
- [Cell Culture](#)

ODF2L Antibody (C-term) - Images



ODF2L Antibody (C-term) (Cat. #AP13014b) western blot analysis in NCI-H292 cell line lysates (35ug/lane). This demonstrates the ODF2L antibody detected the ODF2L protein (arrow).



ODF2L Antibody (C-term) (Cat. #AP13014b) immunohistochemistry analysis in formalin fixed and paraffin embedded human stomach tissue followed by peroxidase conjugation of the secondary antibody and DAB staining. This data demonstrates the use of ODF2L Antibody (C-term) for immunohistochemistry. Clinical relevance has not been evaluated.

ODF2L Antibody (C-term) - Background

ODF2L belongs to the ODF2 family. The specific function of this protein remains unknown.

ODF2L Antibody (C-term) - References

Strausberg, R.L., et al. Proc. Natl. Acad. Sci. U.S.A. 99(26):16899-16903(2002)
Nagase, T., et al. DNA Res. 6(5):337-345(1999)
Bonaldo, M.F., et al. Genome Res. 6(9):791-806(1996)