

SP6 Antibody (Center)
Affinity Purified Rabbit Polyclonal Antibody (Pab)
Catalog # AP13016c**Specification**

SP6 Antibody (Center) - Product Information

Application	WB, FC,E
Primary Accession	Q3SY56
Other Accession	Q9ESX2 , NP_954871.1
Reactivity	Human
Predicted	Mouse
Host	Rabbit
Clonality	Polyclonal
Isotype	Rabbit IgG
Calculated MW	39840
Antigen Region	196-225

SP6 Antibody (Center) - Additional Information**Gene ID** 80320**Other Names**

Transcription factor Sp6, Krueppel-like factor 14, SP6, KLF14

Target/Specificity

This SP6 antibody is generated from rabbits immunized with a KLH conjugated synthetic peptide between 196-225 amino acids from the Central region of human SP6.

Dilution

WB~~1:1000

FC~~1:10~50

Format

Purified polyclonal antibody supplied in PBS with 0.09% (W/V) sodium azide. This antibody is purified through a protein A column, followed by peptide affinity purification.

Storage

Maintain refrigerated at 2-8°C for up to 2 weeks. For long term storage store at -20°C in small aliquots to prevent freeze-thaw cycles.

Precautions

SP6 Antibody (Center) is for research use only and not for use in diagnostic or therapeutic procedures.

SP6 Antibody (Center) - Protein Information**Name** SP6

Synonyms KLF14

Function Promotes cell proliferation (By similarity). Plays a role in tooth germ growth (By similarity). Plays a role in the control of enamel mineralization. Binds the AMBN promoter (PubMed:[32167558](#)).

Cellular Location

Nucleus.

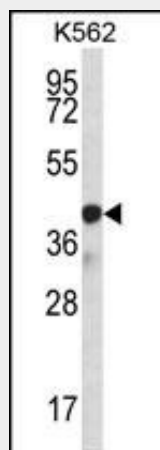
Tissue Location

Ubiquitous.

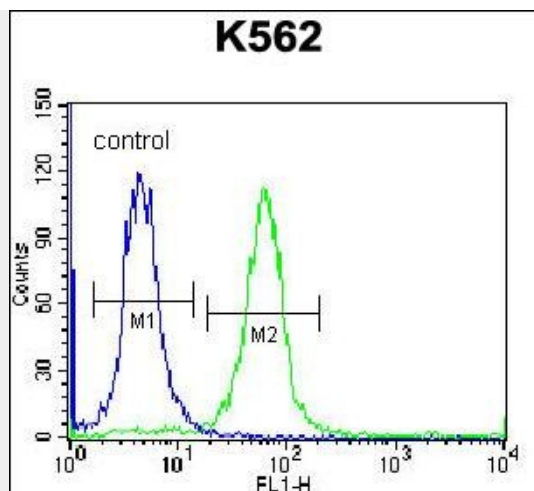
SP6 Antibody (Center) - Protocols

Provided below are standard protocols that you may find useful for product applications.

- [Western Blot](#)
- [Blocking Peptides](#)
- [Dot Blot](#)
- [Immunohistochemistry](#)
- [Immunofluorescence](#)
- [Immunoprecipitation](#)
- [Flow Cytometry](#)
- [Cell Culture](#)

SP6 Antibody (Center) - Images

SP6 Antibody (Center) (Cat. #AP13016c) western blot analysis in K562 cell line lysates (35ug/lane). This demonstrates the SP6 antibody detected the SP6 protein (arrow).



SP6 Antibody (Center) (Cat. #AP13016c) flow cytometric analysis of K562 cells (right histogram) compared to a negative control cell (left histogram). FITC-conjugated donkey-anti-rabbit secondary antibodies were used for the analysis.

SP6 Antibody (Center) - Background

SP6 belongs to a family of transcription factors that contain 3 classical zinc finger DNA-binding domains consisting of a zinc atom tetrahedrally coordinated by 2 cysteines and 2 histidines (C2H2 motif). These transcription factors bind to GC-rich sequences and related GT and CACCC boxes (Schohy et al., 2000 [PubMed 11087666]).

SP6 Antibody (Center) - References

Nakamura, T., et al. J. Biol. Chem. 279(1):626-634(2004)
Schohy, S., et al. Genomics 70(1):93-101(2000)