

MBNL2 Antibody (C-term)
Affinity Purified Rabbit Polyclonal Antibody (Pab)
Catalog # AP13023B

Specification

MBNL2 Antibody (C-term) - Product Information

Application	WB, FC, IHC-P,E
Primary Accession	Q5VZF2
Other Accession	NP_659002.1 , NP_997187.1
Reactivity	Human
Host	Rabbit
Clonality	Polyclonal
Isotype	Rabbit IgG
Calculated MW	40518
Antigen Region	261-290

MBNL2 Antibody (C-term) - Additional Information

Gene ID 10150

Other Names

Muscleblind-like protein 2, Muscleblind-like protein 1, Muscleblind-like protein-like, Muscleblind-like protein-like 39, MBNL2, MBLL, MBLL39, MLP1

Target/Specificity

This MBNL2 antibody is generated from rabbits immunized with a KLH conjugated synthetic peptide between 261-290 amino acids from the C-terminal region of human MBNL2.

Dilution

WB~~1:1000
FC~~1:10~50
IHC-P~~1:10~50
E~~Use at an assay dependent concentration.

Format

Purified polyclonal antibody supplied in PBS with 0.09% (W/V) sodium azide. This antibody is purified through a protein A column, followed by peptide affinity purification.

Storage

Maintain refrigerated at 2-8°C for up to 2 weeks. For long term storage store at -20°C in small aliquots to prevent freeze-thaw cycles.

Precautions

MBNL2 Antibody (C-term) is for research use only and not for use in diagnostic or therapeutic procedures.

MBNL2 Antibody (C-term) - Protein Information

Name MBNL2**Synonyms** MBLL, MBLL39, MLP1

Function Mediates pre-mRNA alternative splicing regulation. Acts either as activator or repressor of splicing on specific pre-mRNA targets. Inhibits cardiac troponin-T (TNNT2) pre-mRNA exon inclusion but induces insulin receptor (IR) pre-mRNA exon inclusion in muscle. Antagonizes the alternative splicing activity pattern of CELF proteins. RNA-binding protein that binds to 5'ACACCC-3' core sequence, termed zipcode, within the 3'UTR of ITGA3. Binds to CUG triplet repeat expansion in myotonic dystrophy muscle cells by sequestering the target RNAs. Together with RNA binding proteins RBPMS and RBFOX2, activates vascular smooth muscle cells alternative splicing events (By similarity). Regulates NCOR2 alternative splicing (By similarity). Seems to regulate expression and localization of ITGA3 by transporting it from the nucleus to cytoplasm at adhesion plaques. May play a role in myotonic dystrophy pathophysiology (DM).

Cellular Location

Nucleus. Cytoplasm. Note=Greater concentration in the nucleus. Expressed in or near large cytoplasmic adhesion plaques (PubMed:16273094). Location in the cytoplasm is microtubule-dependent (PubMed:16273094). In both DM1 and DM2 patients, colocalizes with nuclear foci of retained expanded-repeat transcripts (PubMed:11929853)

Tissue Location

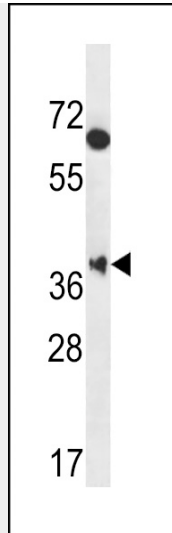
Expressed in heart, brain, placenta, lung, liver, skeletal muscle, kidney and pancreas.

MBNL2 Antibody (C-term) - Protocols

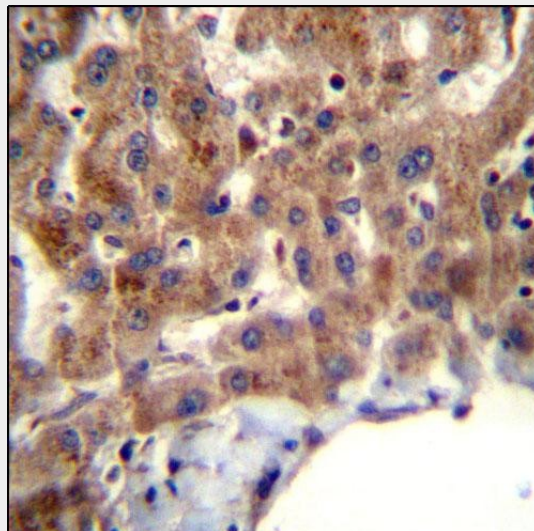
Provided below are standard protocols that you may find useful for product applications.

- [Western Blot](#)
- [Blocking Peptides](#)
- [Dot Blot](#)
- [Immunohistochemistry](#)
- [Immunofluorescence](#)
- [Immunoprecipitation](#)
- [Flow Cytometry](#)
- [Cell Culture](#)

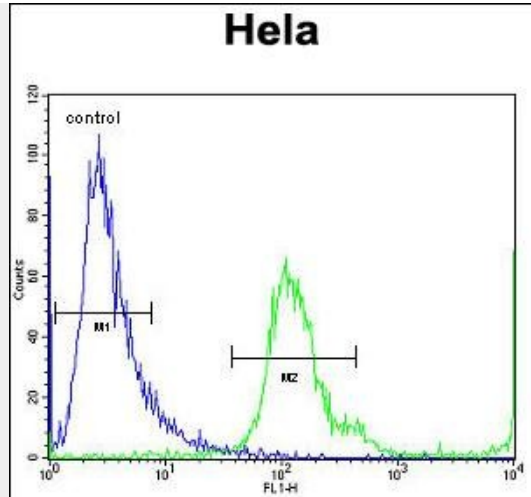
MBNL2 Antibody (C-term) - Images



MBNL2 Antibody (C-term) (Cat. #AP13023b) western blot analysis in Hela cell line lysates (35ug/lane). This demonstrates the MBNL2 antibody detected the MBNL2 protein (arrow).



MBNL2 Antibody (C-term) (Cat. #AP13023b) immunohistochemistry analysis in formalin fixed and paraffin embedded human liver tissue followed by peroxidase conjugation of the secondary antibody and DAB staining. This data demonstrates the use of MBNL2 Antibody (C-term) for immunohistochemistry. Clinical relevance has not been evaluated.



MBNL2 Antibody (C-term) (Cat. #AP13023b) flow cytometric analysis of Hela cells (right histogram) compared to a negative control cell (left histogram). FITC-conjugated goat-anti-rabbit secondary antibodies were used for the analysis.

MBNL2 Antibody (C-term) - Background

This gene encodes a C3H-type zinc finger protein, which is similar to the *Drosophila melanogaster* muscleblind B protein. *Drosophila* muscleblind is a gene required for photoreceptor differentiation. Several alternatively spliced transcript variants have been described but the full-length nature of only some have been determined.

MBNL2 Antibody (C-term) - References

Rose, J.E., et al. *Mol. Med.* 16 (7-8), 247-253 (2010) :
He, F., et al. *Protein Sci.* 18(1):80-91(2009)
Holt, I., et al. *Am. J. Pathol.* 174(1):216-227(2009)
Paul, S., et al. *EMBO J.* 25(18):4271-4283(2006)
Adereth, Y., et al. *Nat. Cell Biol.* 7(12):1240-1247(2005)