

**PGA4 Antibody (C-term)**  
**Affinity Purified Rabbit Polyclonal Antibody (Pab)**  
**Catalog # AP13025b**

**Specification**

---

**PGA4 Antibody (C-term) - Product Information**

Application	WB, IHC-P,E
Primary Accession	<a href="#">P0DJD7</a>
Other Accession	<a href="#">P0DJD9</a> , <a href="#">P28713</a> , <a href="#">P27822</a> , <a href="#">P0DJD8</a> , <a href="#">P27821</a> , <a href="#">P28712</a> , <a href="#">P00790</a> , <a href="#">NP_001073276.1</a>
Reactivity	Human
Predicted	Rabbit
Host	Rabbit
Clonality	Polyclonal
Isotype	Rabbit IgG
Calculated MW	41977
Antigen Region	353-381

**PGA4 Antibody (C-term) - Additional Information**

**Gene ID** 643847

**Other Names**

Pepsin A-4, Pepsinogen-4, PGA4

**Target/Specificity**

This PGA4 antibody is generated from rabbits immunized with a KLH conjugated synthetic peptide between 353-381 amino acids from the C-terminal region of human PGA4.

**Dilution**

WB~~1:1000

IHC-P~~1:10~50

E~~Use at an assay dependent concentration.

**Format**

Purified polyclonal antibody supplied in PBS with 0.09% (W/V) sodium azide. This antibody is purified through a protein A column, followed by peptide affinity purification.

**Storage**

Maintain refrigerated at 2-8°C for up to 2 weeks. For long term storage store at -20°C in small aliquots to prevent freeze-thaw cycles.

**Precautions**

PGA4 Antibody (C-term) is for research use only and not for use in diagnostic or therapeutic procedures.

**PGA4 Antibody (C-term) - Protein Information**

**Name** PGA4

**Function** Shows particularly broad specificity; although bonds involving phenylalanine and leucine are preferred, many others are also cleaved to some extent.

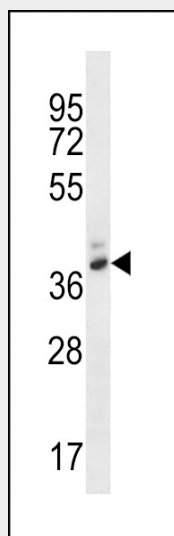
**Cellular Location**

Secreted.

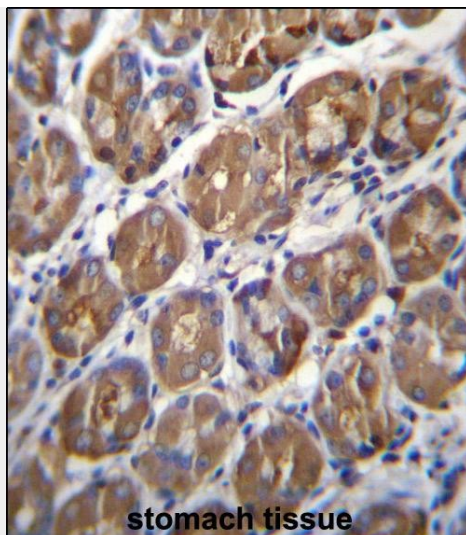
**PGA4 Antibody (C-term) - Protocols**

Provided below are standard protocols that you may find useful for product applications.

- [Western Blot](#)
- [Blocking Peptides](#)
- [Dot Blot](#)
- [Immunohistochemistry](#)
- [Immunofluorescence](#)
- [Immunoprecipitation](#)
- [Flow Cytometry](#)
- [Cell Culture](#)

**PGA4 Antibody (C-term) - Images**

PGA4 Antibody (C-term) (Cat. #AP13025b) western blot analysis in WiDr cell line lysates (35ug/lane). This demonstrates the PGA4 antibody detected the PGA4 protein (arrow).



PGA4 Antibody (C-term) (Cat. #AP13025b) immunohistochemistry analysis in formalin fixed and paraffin embedded human stomach tissue followed by peroxidase conjugation of the secondary antibody and DAB staining. This data demonstrates the use of PGA4 Antibody (C-term) for immunohistochemistry. Clinical relevance has not been evaluated.

#### **PGA4 Antibody (C-term) - Background**

PGA4 shows particularly broad specificity; although bonds involving phenylalanine and leucine are preferred, many others are also cleaved to some extent.

#### **PGA4 Antibody (C-term) - References**

Fujinaga, M., et al. Protein Sci. 4(5):960-972(1995)  
Athauda, S.B., et al. J. Biochem. 106(5):920-927(1989)  
Evers, M.P., et al. Genomics 4(3):232-239(1989)  
Foltmann, B. FEBS Lett. 241 (1-2), 69-72 (1988) :  
Ichiara, Y., et al. J. Biochem. 98(2):483-492(1985)