

**CHI3L2 Antibody (N-term)**  
**Affinity Purified Rabbit Polyclonal Antibody (Pab)**  
**Catalog # AP13044a**

**Specification**

---

**CHI3L2 Antibody (N-term) - Product Information**

Application	WB, IHC-P, FC,E
Primary Accession	<a href="#">Q15782</a>
Other Accession	<a href="#">NP_001020368.1</a> , <a href="#">NP_001020370.1</a>
Reactivity	Human
Host	Rabbit
Clonality	Polyclonal
Isotype	Rabbit IgG
Antigen Region	22-50

**CHI3L2 Antibody (N-term) - Additional Information**

**Gene ID** 1117

**Other Names**

Chitinase-3-like protein 2, Chondrocyte protein 39, YKL-39, CHI3L2

**Target/Specificity**

This CHI3L2 antibody is generated from rabbits immunized with a KLH conjugated synthetic peptide between 22-50 amino acids from the N-terminal region of human CHI3L2.

**Dilution**

WB~~1:1000  
IHC-P~~1:10~50  
FC~~1:10~50

**Format**

Purified polyclonal antibody supplied in PBS with 0.09% (W/V) sodium azide. This antibody is purified through a protein A column, followed by peptide affinity purification.

**Storage**

Maintain refrigerated at 2-8°C for up to 2 weeks. For long term storage store at -20°C in small aliquots to prevent freeze-thaw cycles.

**Precautions**

CHI3L2 Antibody (N-term) is for research use only and not for use in diagnostic or therapeutic procedures.

**CHI3L2 Antibody (N-term) - Protein Information**

**Name** CHI3L2

**Function** Lectin that binds chitooligosaccharides and other glycans with high affinity, but not

heparin. Has no chitinase activity.

#### Cellular Location

Secreted.

#### Tissue Location

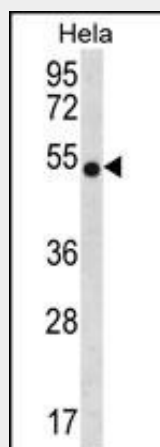
Highest expression in chondrocytes, followed by synoviocytes, lung and heart. Not detected in spleen, pancreas, and liver. May also be expressed in developing brain and placenta

### CHI3L2 Antibody (N-term) - Protocols

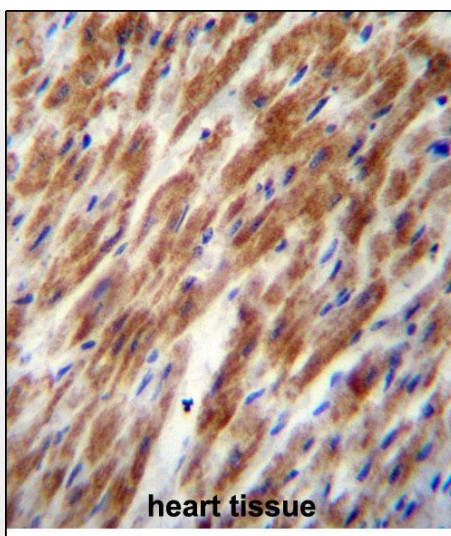
Provided below are standard protocols that you may find useful for product applications.

- [Western Blot](#)
- [Blocking Peptides](#)
- [Dot Blot](#)
- [Immunohistochemistry](#)
- [Immunofluorescence](#)
- [Immunoprecipitation](#)
- [Flow Cytometry](#)
- [Cell Culture](#)

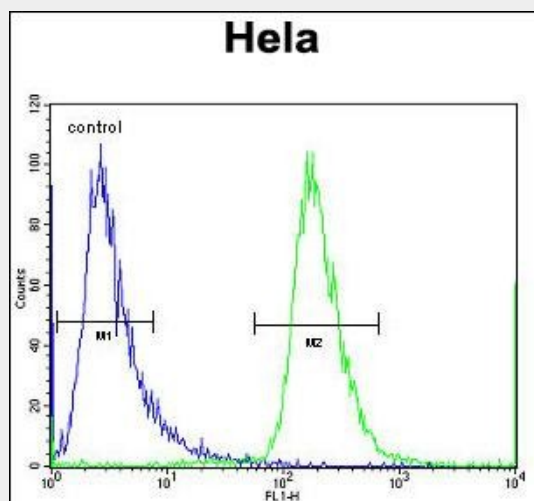
### CHI3L2 Antibody (N-term) - Images



CHI3L2 Antibody (N-term) (Cat. #AP13044a) western blot analysis in HeLa cell line lysates (35ug/lane). This demonstrates the CHI3L2 antibody detected the CHI3L2 protein (arrow).



CHI3L2 Antibody (N-term) (Cat. #AP13044a) immunohistochemistry analysis in formalin fixed and paraffin embedded human heart tissue followed by peroxidase conjugation of the secondary antibody and DAB staining. This data demonstrates the use of CHI3L2 Antibody (N-term) for immunohistochemistry. Clinical relevance has not been evaluated.



CHI3L2 Antibody (N-term) (Cat. #AP13044) flow cytometric analysis of Hela cells (right histogram) compared to a negative control cell (left histogram). FITC-conjugated goat-anti-rabbit secondary antibodies were used for the analysis.

### CHI3L2 Antibody (N-term) - Background

CHI3L2 may bind glycan structure with high affinity, but not heparin. Has no chitotriosidase activity.

### CHI3L2 Antibody (N-term) - References

Rose, J. Phd, et al. Mol. Med. (2010) In press :  
Oh, J.H., et al. Mamm. Genome 16(12):942-954(2005)  
Steck, E., et al. Biochem. Biophys. Res. Commun. 299(1):109-115(2002)  
Hu, B., et al. J. Biol. Chem. 271(32):19415-19420(1996)