

**CCDC90B Antibody (Center)**  
**Affinity Purified Rabbit Polyclonal Antibody (Pab)**  
**Catalog # AP13045c****Specification**

---

**CCDC90B Antibody (Center) - Product Information**

Application	WB, IHC-P,E
Primary Accession	<a href="#">O9GZT6</a>
Other Accession	<a href="#">O4V897</a> , <a href="#">O8C3X2</a> , <a href="#">NP_068597.2</a>
Reactivity	Human
Predicted	Mouse, Rat
Host	Rabbit
Clonality	Polyclonal
Isotype	Rabbit IgG
Calculated MW	29506
Antigen Region	123-152

**CCDC90B Antibody (Center) - Additional Information****Gene ID** 60492**Other Names**

Coiled-coil domain-containing protein 90B, mitochondrial, CCDC90B

**Target/Specificity**

This CCDC90B antibody is generated from rabbits immunized with a KLH conjugated synthetic peptide between 123-152 amino acids from the Central region of human CCDC90B.

**Dilution**

WB~~1:1000

IHC-P~~1:10~50

E~~Use at an assay dependent concentration.

**Format**

Purified polyclonal antibody supplied in PBS with 0.09% (W/V) sodium azide. This antibody is purified through a protein A column, followed by peptide affinity purification.

**Storage**

Maintain refrigerated at 2-8°C for up to 2 weeks. For long term storage store at -20°C in small aliquots to prevent freeze-thaw cycles.

**Precautions**

CCDC90B Antibody (Center) is for research use only and not for use in diagnostic or therapeutic procedures.

**CCDC90B Antibody (Center) - Protein Information****Name** CCDC90B

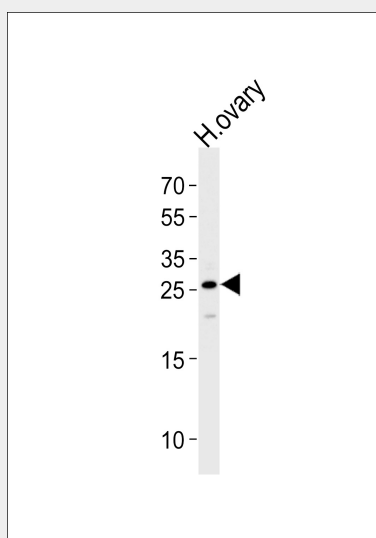
**Cellular Location**

Mitochondrion membrane; Single-pass membrane protein

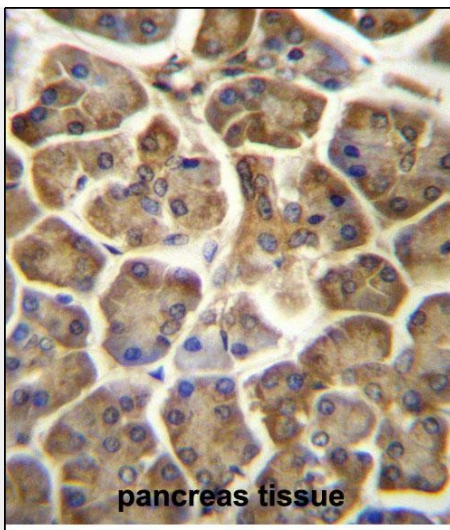
**CCDC90B Antibody (Center) - Protocols**

Provided below are standard protocols that you may find useful for product applications.

- [Western Blot](#)
- [Blocking Peptides](#)
- [Dot Blot](#)
- [Immunohistochemistry](#)
- [Immunofluorescence](#)
- [Immunoprecipitation](#)
- [Flow Cytometry](#)
- [Cell Culture](#)

**CCDC90B Antibody (Center) - Images**

Western blot analysis of lysate from human ovary tissue lysate, using CCDC90B Antibody (Center)(Cat. #AP13045c). AP13045c was diluted at 1:1000 at each lane. A goat anti-rabbit IgG H&L(HRP) at 1:5000 dilution was used as the secondary antibody. Lysate at 35ug per lane.



CCDC90B Antibody (Center) (Cat. #AP13045c) immunohistochemistry analysis in formalin fixed and paraffin embedded human pancreas tissue followed by peroxidase conjugation of the secondary antibody and DAB staining. This data demonstrates the use of CCDC90B Antibody (Center) for immunohistochemistry. Clinical relevance has not been evaluated.

#### **CCDC90B Antibody (Center) - Background**

Coiled-coil domain containing 90B (CCDC90B) protein has seven predicted alpha helices, a characteristic of coiled-coil proteins. CCDC90B is characterized by the presence of a domain of unknown function, DUF1640. This domain is a characteristic of the entire protein with the exception of the first twenty-three amino acid residues, which are a mitochondrial targeting site and cleaved. This entry describes 2 isoforms produced by alternative splicing.

#### **CCDC90B Antibody (Center) - References**

Matsuoka, S., et al. Science 316(5828):1160-1166(2007)  
Stelzl, U., et al. Cell 122(6):957-968(2005)  
Simpson, J.C., et al. EMBO Rep. 1(3):287-292(2000)