

**PHF14 Antibody (N-term)**  
**Affinity Purified Rabbit Polyclonal Antibody (Pab)**  
**Catalog # AP13048a**

**Specification**

---

**PHF14 Antibody (N-term) - Product Information**

Application	WB,E
Primary Accession	<a href="#">O94880</a>
Other Accession	<a href="#">NP_055475.2</a>
Reactivity	Human
Host	Rabbit
Clonality	Polyclonal
Isotype	Rabbit IgG
Calculated MW	106986
Antigen Region	231-260

**PHF14 Antibody (N-term) - Additional Information**

**Gene ID** 9678

**Other Names**

PHD finger protein 14, PHF14, KIAA0783

**Target/Specificity**

This PHF14 antibody is generated from rabbits immunized with a KLH conjugated synthetic peptide between 231-260 amino acids from the N-terminal region of human PHF14.

**Dilution**

WB~~1:1000

E~~Use at an assay dependent concentration.

**Format**

Purified polyclonal antibody supplied in PBS with 0.09% (W/V) sodium azide. This antibody is purified through a protein A column, followed by peptide affinity purification.

**Storage**

Maintain refrigerated at 2-8°C for up to 2 weeks. For long term storage store at -20°C in small aliquots to prevent freeze-thaw cycles.

**Precautions**

PHF14 Antibody (N-term) is for research use only and not for use in diagnostic or therapeutic procedures.

**PHF14 Antibody (N-term) - Protein Information**

**Name** PHF14

**Synonyms** KIAA0783

**Function** Histone-binding protein (PubMed:[23688586](#)). Binds preferentially to unmodified histone H3 but can also bind to a lesser extent to histone H3 trimethylated at 'Lys-9' (H3K9me3) as well as to histone H3 monomethylated at 'Lys-27' (H3K27ac) and trimethylated at 'Lys-27' (H3K27me3) (By similarity). Represses PDGFRA expression, thus playing a role in regulation of mesenchymal cell proliferation (By similarity). Suppresses the expression of CDKN1A/p21 by reducing the level of trimethylation of histone H3 'Lys-4', leading to enhanced proliferation of germinal center B cells (By similarity).

#### **Cellular Location**

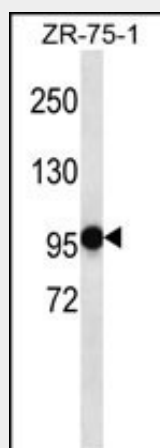
[Isoform 1]: Nucleus. Chromosome. Note=Mainly localized in the nucleus of interphase cells. In mitotic cells, colocalizes with condensed chromatin during metaphase and anaphase.

#### **PHF14 Antibody (N-term) - Protocols**

Provided below are standard protocols that you may find useful for product applications.

- [Western Blot](#)
- [Blocking Peptides](#)
- [Dot Blot](#)
- [Immunohistochemistry](#)
- [Immunofluorescence](#)
- [Immunoprecipitation](#)
- [Flow Cytometry](#)
- [Cell Culture](#)

#### **PHF14 Antibody (N-term) - Images**



PHF14 Antibody (N-term) (Cat. #AP13048a) western blot analysis in ZR-75-1 cell line lysates (35ug/lane). This demonstrates the PHF14 antibody detected the PHF14 protein (arrow).

#### **PHF14 Antibody (N-term) - References**

- Olsen, J.V., et al. Cell 127(3):635-648(2006)  
Oh, J.H., et al. Mamm. Genome 16(12):942-954(2005)  
Beausoleil, S.A., et al. Proc. Natl. Acad. Sci. U.S.A. 101(33):12130-12135(2004)  
Harrington, J.J., et al. Nat. Biotechnol. 19(5):440-445(2001)