

## LNX2 Antibody (C-term)

Peptide Affinity Purified Rabbit Polyclonal Antibody (Pab)  
Catalog # AP13071b

### Specification

#### LNX2 Antibody (C-term) - Product Information

Application	WB, IHC-P,E
Primary Accession	<a href="#">Q8N448</a>
Other Accession	<a href="#">NP_699202.1</a>
Reactivity	Human
Host	Rabbit
Clonality	Polyclonal
Isotype	Rabbit Ig
Antigen Region	551-579

#### LNX2 Antibody (C-term) - Additional Information

Gene ID 222484

#### Other Names

Ligand of Numb protein X 2, Numb-binding protein 2, PDZ domain-containing RING finger protein 1, LNX2, PDZRN1

#### Target/Specificity

This LNX2 antibody is generated from rabbits immunized with a KLH conjugated synthetic peptide between 551-579 amino acids from the C-terminal region of human LNX2.

#### Dilution

WB~~1:1000  
IHC-P~~1:10~50

#### Format

Purified polyclonal antibody supplied in PBS with 0.09% (W/V) sodium azide. This antibody is purified through a protein A column, followed by peptide affinity purification.

#### Storage

Maintain refrigerated at 2-8°C for up to 2 weeks. For long term storage store at -20°C in small aliquots to prevent freeze-thaw cycles.

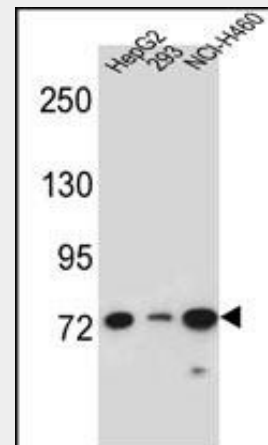
#### Precautions

LNX2 Antibody (C-term) is for research use only and not for use in diagnostic or therapeutic procedures.

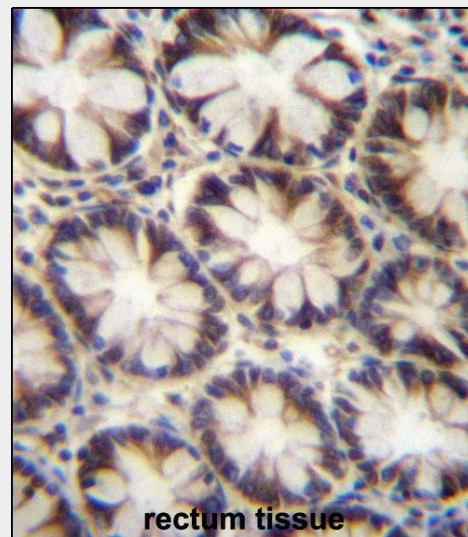
#### LNX2 Antibody (C-term) - Protein Information

Name LNX2

Synonyms PDZRN1



LNX2 Antibody (C-term) (Cat. #AP13071b) western blot analysis in HepG2,293,NCI-H460 cell line lysates (35ug/lane).This demonstrates the LNX2 antibody detected the LNX2 protein (arrow).



LNX2 Antibody (C-term) (Cat. #AP13071b)immunohistochemistry analysis in formalin fixed and paraffin embedded human rectum tissue followed by peroxidase conjugation of the secondary antibody and DAB staining.This data demonstrates the use of LNX2 Antibody (C-term) for immunohistochemistry. Clinical relevance has not been evaluated.

#### LNX2 Antibody (C-term) - Background

## **LNX2 Antibody (C-term) - Protocols**

Provided below are standard protocols that you may find useful for product applications.

- [Western Blot](#)
- [Blocking Peptides](#)
- [Dot Blot](#)
- [Immunohistochemistry](#)
- [Immunofluorescence](#)
- [Immunoprecipitation](#)
- [Flow Cytometry](#)
- [Cell Culture](#)

## **LNX2 Antibody (C-term) - Citations**

- [Gli3 repressor controls cell fates and cell adhesion for proper establishment of neurogenic niche.](#)

LNX2 (Ligand of numb-protein X 2) is a multimodular protein that binds to NUMB via the NPXY motif. It may serve as a molecular scaffold that localizes unrelated, interacting proteins, such as NUMB, to specific subcellular sites.

## **LNX2 Antibody (C-term) - References**

Thorleifsson, G., et al. Nat. Genet. 41(1):18-24(2009)  
Sullivan, P.F., et al. Mol. Psychiatry 13(6):570-584(2008)  
Dunham, A., et al. Nature 428(6982):522-528(2004)  
Rice, D.S., et al. Mol. Cell. Neurosci. 18(5):525-540(2001)