

**ATAD2 Antibody (N-term)**  
**Affinity Purified Rabbit Polyclonal Antibody (Pab)**  
**Catalog # AP13073a****Specification**

---

**ATAD2 Antibody (N-term) - Product Information**

Application	WB,E
Primary Accession	<a href="#">Q6PL18</a>
Other Accession	<a href="#">NP_054828.2</a>
Reactivity	Human
Host	Rabbit
Clonality	Polyclonal
Isotype	Rabbit IgG
Calculated MW	158554
Antigen Region	204-232

**ATAD2 Antibody (N-term) - Additional Information****Gene ID** 29028**Other Names**

ATPase family AAA domain-containing protein 2, AAA nuclear coregulator cancer-associated protein, ANCCA, ATAD2

**Target/Specificity**

This ATAD2 antibody is generated from rabbits immunized with a KLH conjugated synthetic peptide between 204-232 amino acids from the N-terminal region of human ATAD2.

**Dilution**

WB~~1:1000

E~~Use at an assay dependent concentration.

**Format**

Purified polyclonal antibody supplied in PBS with 0.09% (W/V) sodium azide. This antibody is purified through a protein A column, followed by peptide affinity purification.

**Storage**

Maintain refrigerated at 2-8°C for up to 2 weeks. For long term storage store at -20°C in small aliquots to prevent freeze-thaw cycles.

**Precautions**

ATAD2 Antibody (N-term) is for research use only and not for use in diagnostic or therapeutic procedures.

**ATAD2 Antibody (N-term) - Protein Information****Name** ATAD2

**Function** May be a transcriptional coactivator of the nuclear receptor ESR1 required to induce the expression of a subset of estradiol target genes, such as CCND1, MYC and E2F1. May play a role in the recruitment or occupancy of CREBBP at some ESR1 target gene promoters. May be required for histone hyperacetylation. Involved in the estrogen-induced cell proliferation and cell cycle progression of breast cancer cells.

**Cellular Location**

Nucleus

**Tissue Location**

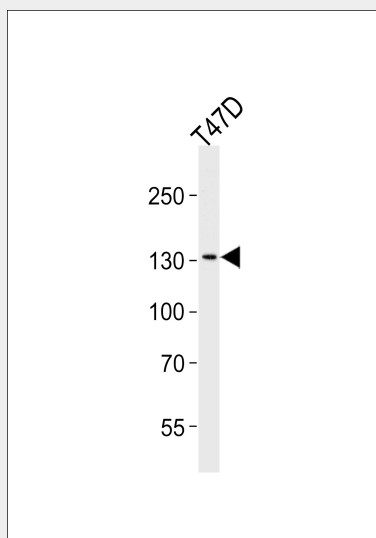
Highly expressed in estrogen receptor positive breast tumors and in osteosarcoma tumors.

**ATAD2 Antibody (N-term) - Protocols**

Provided below are standard protocols that you may find useful for product applications.

- [Western Blot](#)
- [Blocking Peptides](#)
- [Dot Blot](#)
- [Immunohistochemistry](#)
- [Immunofluorescence](#)
- [Immunoprecipitation](#)
- [Flow Cytometry](#)
- [Cell Culture](#)

**ATAD2 Antibody (N-term) - Images**



Western blot analysis of lysate from T47D cell line, using ATAD2 Antibody (N-term)(Cat. #AP13073a). AP13073a was diluted at 1:1000 at each lane. A goat anti-rabbit IgG H&L(HRP) at 1:5000 dilution was used as the secondary antibody. Lysate at 35ug.

**ATAD2 Antibody (N-term) - Background**

A large family of ATPases has been described, whose key feature is that they share a conserved region of about 220 amino acids that contains an ATP-binding site. The proteins that belong to this family either contain one or two AAA (ATPases Associated

with diverse cellular Activities) domains. AAA family proteins often perform chaperone-like functions that assist in the assembly, operation, or disassembly of protein complexes. The protein encoded by this gene contains two AAA domains, as well as a bromodomain.

#### **ATAD2 Antibody (N-term) - References**

Revenko, A.S., et al. Mol. Cell. Biol. 30(22):5260-5272(2010)  
Ciro, M., et al. Cancer Res. 69(21):8491-8498(2009)  
Zou, J.X., et al. Cancer Res. 69(8):3339-3346(2009)  
Zou, J.X., et al. Proc. Natl. Acad. Sci. U.S.A. 104(46):18067-18072(2007)  
Olsen, J.V., et al. Cell 127(3):635-648(2006)