

**WDR12 Antibody (Center)**  
**Affinity Purified Rabbit Polyclonal Antibody (Pab)**  
**Catalog # AP13076c****Specification**

---

**WDR12 Antibody (Center) - Product Information**

Application	WB, IHC-P,E
Primary Accession	<a href="#">O9GZL7</a>
Other Accession	<a href="#">Q0VC24</a> , <a href="#">NP_060726.3</a>
Reactivity	Human
Predicted	Bovine
Host	Rabbit
Clonality	Polyclonal
Isotype	Rabbit IgG
Calculated MW	47708
Antigen Region	210-239

**WDR12 Antibody (Center) - Additional Information****Gene ID** 55759**Other Names**

Ribosome biogenesis protein WDR12 {ECO:0000255|HAMAP-Rule:MF\_03029}, WD repeat-containing protein 12 {ECO:0000255|HAMAP-Rule:MF\_03029}, WDR12 {ECO:0000255|HAMAP-Rule:MF\_03029}

**Target/Specificity**

This WDR12 antibody is generated from rabbits immunized with a KLH conjugated synthetic peptide between 210-239 amino acids from the Central region of human WDR12.

**Dilution**

WB~~1:1000  
IHC-P~~1:10~50

**Format**

Purified polyclonal antibody supplied in PBS with 0.09% (W/V) sodium azide. This antibody is purified through a protein A column, followed by peptide affinity purification.

**Storage**

Maintain refrigerated at 2-8°C for up to 2 weeks. For long term storage store at -20°C in small aliquots to prevent freeze-thaw cycles.

**Precautions**

WDR12 Antibody (Center) is for research use only and not for use in diagnostic or therapeutic procedures.

**WDR12 Antibody (Center) - Protein Information**

**Name** WDR12 {ECO:0000255|HAMAP-Rule:MF\_03029}

**Function** Component of the PeBoW complex, which is required for maturation of 28S and 5.8S ribosomal RNAs and formation of the 60S ribosome.

**Cellular Location**

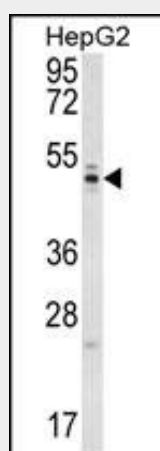
Nucleus, nucleolus {ECO:0000255|HAMAP- Rule:MF\_03029, ECO:0000269|PubMed:12429849, ECO:0000269|PubMed:16043514, ECO:0000269|PubMed:26601951}. Nucleus, nucleoplasm {ECO:0000255|HAMAP-Rule:MF\_03029, ECO:0000269|PubMed:16043514}

**WDR12 Antibody (Center) - Protocols**

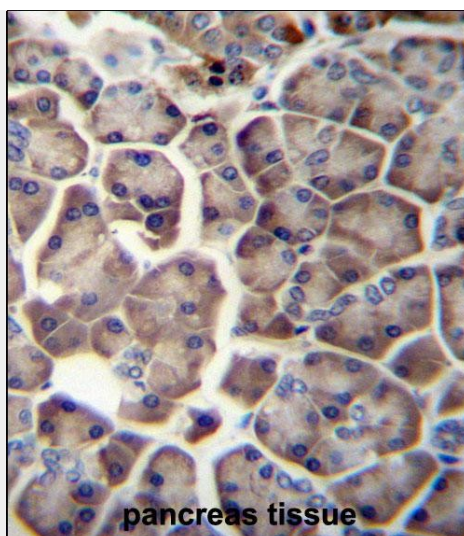
Provided below are standard protocols that you may find useful for product applications.

- [Western Blot](#)
- [Blocking Peptides](#)
- [Dot Blot](#)
- [Immunohistochemistry](#)
- [Immunofluorescence](#)
- [Immunoprecipitation](#)
- [Flow Cytometry](#)
- [Cell Culture](#)

**WDR12 Antibody (Center) - Images**



WDR12 Antibody (Center) (Cat. #AP13076c) western blot analysis in HepG2 cell line lysates (35ug/lane). This demonstrates the WDR12 antibody detected the WDR12 protein (arrow).



WDR12 Antibody (Center) (Cat. #AP13076c) immunohistochemistry analysis in formalin fixed and paraffin embedded human pancreas tissue followed by peroxidase conjugation of the secondary antibody and DAB staining. This data demonstrates the use of WDR12 Antibody (Center) for immunohistochemistry. Clinical relevance has not been evaluated.

#### **WDR12 Antibody (Center) - Background**

This gene encodes a member of the WD repeat protein family. WD repeats are minimally conserved regions of approximately 40 amino acids typically bracketed by gly-his and trp-asp (GH-WD), which may facilitate formation of heterotrimeric or multiprotein complexes. Members of this family are involved in a variety of cellular processes, including cell cycle progression, signal transduction, apoptosis, and gene regulation. This protein is highly similar to the mouse WD repeat domain 12 protein at the amino acid level. The protein encoded by this gene is a component of a nucleolar protein complex that affects maturation of the large ribosomal subunit.

#### **WDR12 Antibody (Center) - References**

Kathiresan, S., et al. Nat. Genet. 41(3):334-341(2009)  
Rohrmoser, M., et al. Mol. Cell. Biol. 27(10):3682-3694(2007)  
Higa, L.A., et al. Nat. Cell Biol. 8(11):1277-1283(2006)  
Grimm, T., et al. Nucleic Acids Res. 34(10):3030-3043(2006)  
Holzel, M., et al. J. Cell Biol. 170(3):367-378(2005)