

**TNRC4 Antibody (N-term)**  
**Affinity Purified Rabbit Polyclonal Antibody (Pab)**  
**Catalog # AP13087a**

**Specification**

---

**TNRC4 Antibody (N-term) - Product Information**

Application	FC, WB,E
Primary Accession	<a href="#">Q5SZQ8</a>
Other Accession	<a href="#">Q8CIN6</a> , <a href="#">Q08E07</a> , <a href="#">NP_009116.3</a>
Reactivity	Human
Predicted	Bovine, Mouse
Host	Rabbit
Clonality	Polyclonal
Isotype	Rabbit IgG
Calculated MW	50548
Antigen Region	3-32

**TNRC4 Antibody (N-term) - Additional Information**

**Gene ID** 11189

**Other Names**

CUGBP Elav-like family member 3, CELF-3, Bruno-like protein 1, CAG repeat protein 4, CUG-BP-and ETR-3-like factor 3, ELAV-type RNA-binding protein 1, ETR-1, Expanded repeat domain protein CAG/CTG 4, RNA-binding protein BRUNOL-1, Trinucleotide repeat-containing gene 4 protein, CELF3, BRUNOL1, CAGH4, ERDA4, TNRC4

**Target/Specificity**

This TNRC4 antibody is generated from rabbits immunized with a KLH conjugated synthetic peptide between 3-32 amino acids from the N-terminal region of human TNRC4.

**Dilution**

FC~~1:10~50

WB~~1:1000

E~~Use at an assay dependent concentration.

**Format**

Purified polyclonal antibody supplied in PBS with 0.09% (W/V) sodium azide. This antibody is purified through a protein A column, followed by peptide affinity purification.

**Storage**

Maintain refrigerated at 2-8°C for up to 2 weeks. For long term storage store at -20°C in small aliquots to prevent freeze-thaw cycles.

**Precautions**

TNRC4 Antibody (N-term) is for research use only and not for use in diagnostic or therapeutic procedures.

**TNRC4 Antibody (N-term) - Protein Information**

**Name** CELF3

**Synonyms** BRUNOL1, CAGH4, ERDA4, TNRC4

**Function** RNA-binding protein involved in the regulation of pre-mRNA alternative splicing. Mediates exon inclusion and/or exclusion in pre- mRNA that are subject to tissue-specific and developmentally regulated alternative splicing. Specifically activates exon 5 inclusion of cardiac isoforms of TNNT2 during heart remodeling at the juvenile to adult transition. Activates the splicing of MAPT/Tau exon 10. Binds to muscle-specific splicing enhancer (MSE) intronic sites flanking the alternative exon 5 of TNNT2 pre-mRNA.

**Cellular Location**

Nucleus. Cytoplasm.

**Tissue Location**

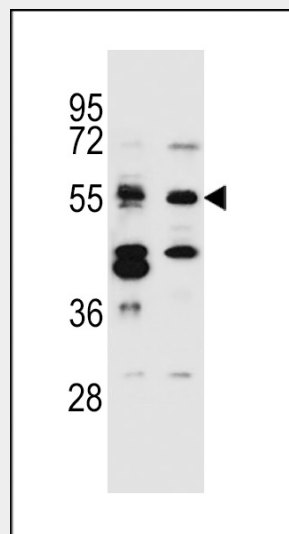
Expressed in brain..

**TNRC4 Antibody (N-term) - Protocols**

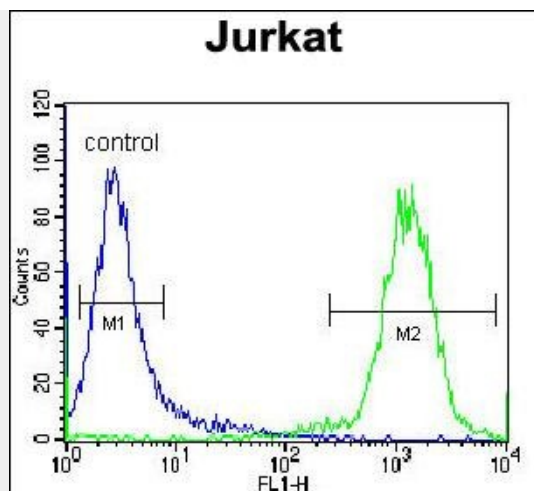
Provided below are standard protocols that you may find useful for product applications.

- [Western Blot](#)
- [Blocking Peptides](#)
- [Dot Blot](#)
- [Immunohistochemistry](#)
- [Immunofluorescence](#)
- [Immunoprecipitation](#)
- [Flow Cytometry](#)
- [Cell Culture](#)

**TNRC4 Antibody (N-term) - Images**



TNRC4 Antibody (N-term) (Cat. #AP13087a) western blot analysis in Jurkat,MDA-MB231 cell line lysates (35ug/lane).This demonstrates the TNRC4 antibody detected the TNRC4 protein (arrow).



TNRC4 Antibody (N-term) (Cat. #AP13087a) flow cytometric analysis of Jurkat cells (right histogram) compared to a negative control cell (left histogram). FITC-conjugated donkey-anti-rabbit secondary antibodies were used for the analysis.

#### **TNRC4 Antibody (N-term) - Background**

Members of the CELF/BRUNOL protein family contain two N-terminal RNA recognition motif (RRM) domains, one C-terminal RRM domain, and a divergent segment of 160-230 aa between the second and third RRM domains. Members of this protein family regulate pre-mRNA alternative splicing and may also be involved in mRNA editing, and translation. Multiple alternatively spliced transcript variants encoding different isoforms have been identified in this gene.

#### **TNRC4 Antibody (N-term) - References**

Bailey, S.D., et al. Diabetes Care 33(10):2250-2253(2010)  
Talmud, P.J., et al. Am. J. Hum. Genet. 85(5):628-642(2009)  
Chapple, J.P., et al. Hum. Mol. Genet. 16(22):2760-2769(2007)  
Ladd, A.N., et al. Mol. Cell. Biol. 21(4):1285-1296(2001)  
Good, P.J., et al. J. Biol. Chem. 275(37):28583-28592(2000)