

ORC5L Antibody (Center)
Affinity Purified Rabbit Polyclonal Antibody (Pab)
Catalog # AP13101c**Specification**

ORC5L Antibody (Center) - Product Information

Application	WB,E
Primary Accession	O43913
Other Accession	NP_002544.1
Reactivity	Mouse
Host	Rabbit
Clonality	Polyclonal
Isotype	Rabbit IgG
Calculated MW	50283
Antigen Region	227-256

ORC5L Antibody (Center) - Additional Information**Gene ID** 5001**Other Names**

Origin recognition complex subunit 5, ORC5, ORC5L

Target/Specificity

This ORC5L antibody is generated from rabbits immunized with a KLH conjugated synthetic peptide between 227-256 amino acids from the Central region of human ORC5L.

Dilution

WB~~1:1000

Format

Purified polyclonal antibody supplied in PBS with 0.09% (W/V) sodium azide. This antibody is purified through a protein A column, followed by peptide affinity purification.

Storage

Maintain refrigerated at 2-8°C for up to 2 weeks. For long term storage store at -20°C in small aliquots to prevent freeze-thaw cycles.

Precautions

ORC5L Antibody (Center) is for research use only and not for use in diagnostic or therapeutic procedures.

ORC5L Antibody (Center) - Protein Information**Name** ORC5**Synonyms** ORC5L

Function Component of the origin recognition complex (ORC) that binds origins of replication. DNA-binding is ATP-dependent. The specific DNA sequences that define origins of replication have not been identified yet. ORC is required to assemble the pre-replication complex necessary to initiate DNA replication.

Cellular Location

Nucleus. Chromosome

Tissue Location

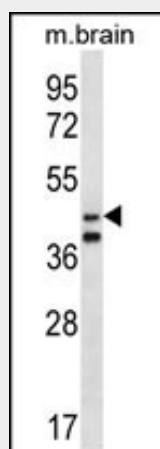
Abundant in spleen, ovary, prostate, testis, and colon mucosa.

ORC5L Antibody (Center) - Protocols

Provided below are standard protocols that you may find useful for product applications.

- [Western Blot](#)
- [Blocking Peptides](#)
- [Dot Blot](#)
- [Immunohistochemistry](#)
- [Immunofluorescence](#)
- [Immunoprecipitation](#)
- [Flow Cytometry](#)
- [Cell Culture](#)

ORC5L Antibody (Center) - Images



ORC5L Antibody (Center) (Cat. #AP13101c) western blot analysis in mouse brain tissue lysates (35ug/lane). This demonstrates the ORC5L antibody detected the ORC5L protein (arrow).

ORC5L Antibody (Center) - Background

The origin recognition complex (ORC) is a highly conserved six subunit protein complex essential for the initiation of the DNA replication in eukaryotic cells. Studies in yeast demonstrated that ORC binds specifically to origins of replication and serves as a platform for the assembly of additional initiation factors such as Cdc6 and Mcm proteins. The protein encoded by this gene is a subunit of the ORC complex. Alternatively spliced transcript variants encoding distinct isoforms have been described. [provided by RefSeq].

ORC5L Antibody (Center) - References

Shimada, M., et al. Hum. Genet. 128(4):433-441(2010)
Trynka, G., et al. Gut 58(8):1078-1083(2009)
Siddiqui, K., et al. J. Biol. Chem. 282(44):32370-32383(2007)
Clarke, C.A., et al. Biochem. J. 388 (PT 2), 705-712 (2005) :
Volkening, M., et al. Mol. Cell. Biol. 25(4):1560-1568(2005)