

RPP25 Antibody (C-term)
Affinity Purified Rabbit Polyclonal Antibody (Pab)
Catalog # AP13106b**Specification**

RPP25 Antibody (C-term) - Product Information

Application	WB,E
Primary Accession	O9BUL9
Other Accession	NP_060263.2
Reactivity	Human
Host	Rabbit
Clonality	Polyclonal
Isotype	Rabbit IgG
Calculated MW	20632
Antigen Region	169-197

RPP25 Antibody (C-term) - Additional Information**Gene ID** 54913**Other Names**

Ribonuclease P protein subunit p25, RNase P protein subunit p25, RPP25

Target/Specificity

This RPP25 antibody is generated from rabbits immunized with a KLH conjugated synthetic peptide between 169-197 amino acids from the C-terminal region of human RPP25.

Dilution

WB~~1:1000

Format

Purified polyclonal antibody supplied in PBS with 0.09% (W/V) sodium azide. This antibody is purified through a protein A column, followed by peptide affinity purification.

Storage

Maintain refrigerated at 2-8°C for up to 2 weeks. For long term storage store at -20°C in small aliquots to prevent freeze-thaw cycles.

Precautions

RPP25 Antibody (C-term) is for research use only and not for use in diagnostic or therapeutic procedures.

RPP25 Antibody (C-term) - Protein Information**Name** RPP25

Function Component of ribonuclease P, a ribonucleoprotein complex that generates mature tRNA molecules by cleaving their 5'-ends (PubMed:[12003489](#), PubMed:[16723659](#), PubMed:[30454648](#)).

Also a component of the MRP ribonuclease complex, which cleaves pre-rRNA sequences (PubMed:[28115465](#)).

Cellular Location

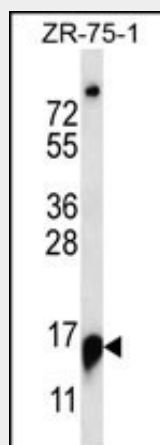
Nucleus, nucleolus

RPP25 Antibody (C-term) - Protocols

Provided below are standard protocols that you may find useful for product applications.

- [Western Blot](#)
- [Blocking Peptides](#)
- [Dot Blot](#)
- [Immunohistochemistry](#)
- [Immunofluorescence](#)
- [Immunoprecipitation](#)
- [Flow Cytometry](#)
- [Cell Culture](#)

RPP25 Antibody (C-term) - Images



RPP25 Antibody (C-term) (Cat. #AP13106b) western blot analysis in ZR-75-1 cell line lysates (35ug/lane). This demonstrates the RPP25 antibody detected the RPP25 protein (arrow).

RPP25 Antibody (C-term) - Background

Component of ribonuclease P, a protein complex that generates mature tRNA molecules by cleaving their 5'-ends. Also a component of RNase MRP. This subunit binds to RNA.

RPP25 Antibody (C-term) - References

- Hands-Taylor, K.L., et al. Nucleic Acids Res. 38(12):4052-4066(2010)
Lamesch, P., et al. Genomics 89(3):307-315(2007)
Welting, T.J., et al. Nucleic Acids Res. 32(7):2138-2146(2004)
Guerrier-Takada, C., et al. RNA 8(3):290-295(2002)