

PQLC2 Antibody (C-term)
Affinity Purified Rabbit Polyclonal Antibody (Pab)
Catalog # AP13107b

Specification

PQLC2 Antibody (C-term) - Product Information

| | |
|-------------------|--|
| Application | WB, IHC-P,E |
| Primary Accession | Q6ZP29 |
| Other Accession | NP_060235.2 , NP_001035214.1 |
| Reactivity | Human, Mouse |
| Host | Rabbit |
| Clonality | Polyclonal |
| Isotype | Rabbit IgG |
| Calculated MW | 31947 |
| Antigen Region | 222-251 |

PQLC2 Antibody (C-term) - Additional Information

Gene ID 54896

Other Names

Lysosomal amino acid transporter 1 homolog, PQ-loop repeat-containing protein 2, PQLC2

Target/Specificity

This PQLC2 antibody is generated from rabbits immunized with a KLH conjugated synthetic peptide between 222-251 amino acids from the C-terminal region of human PQLC2.

Dilution

WB~~1:1000

IHC-P~~1:10~50

Format

Purified polyclonal antibody supplied in PBS with 0.09% (W/V) sodium azide. This antibody is purified through a protein A column, followed by peptide affinity purification.

Storage

Maintain refrigerated at 2-8°C for up to 2 weeks. For long term storage store at -20°C in small aliquots to prevent freeze-thaw cycles.

Precautions

PQLC2 Antibody (C-term) is for research use only and not for use in diagnostic or therapeutic procedures.

PQLC2 Antibody (C-term) - Protein Information

Name SLC66A1 ([HGNC:26001](#))

Function Amino acid transporter that specifically mediates the pH- dependent export of the

cationic amino acids arginine, histidine and lysine from lysosomes.

Cellular Location

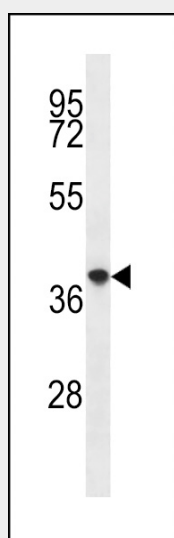
Lysosome membrane; Multi-pass membrane protein

PQLC2 Antibody (C-term) - Protocols

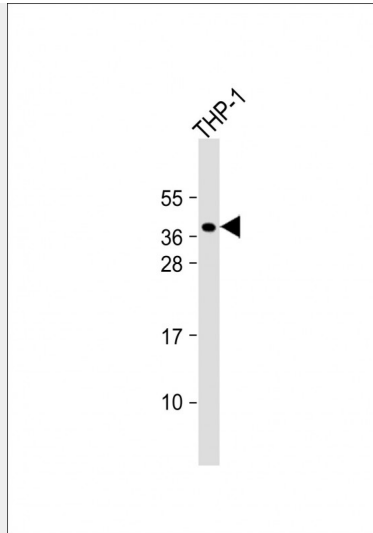
Provided below are standard protocols that you may find useful for product applications.

- [Western Blot](#)
- [Blocking Peptides](#)
- [Dot Blot](#)
- [Immunohistochemistry](#)
- [Immunofluorescence](#)
- [Immunoprecipitation](#)
- [Flow Cytometry](#)
- [Cell Culture](#)

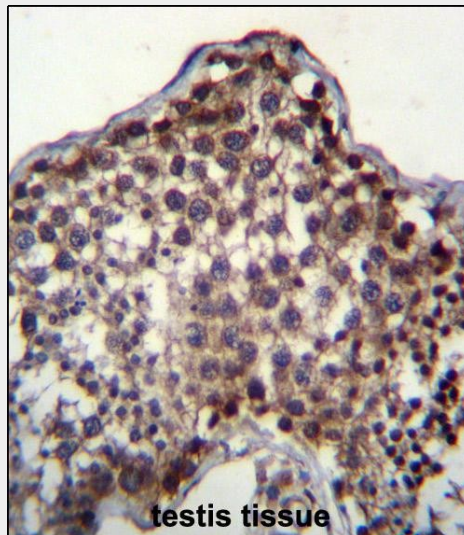
PQLC2 Antibody (C-term) - Images



PQLC2 Antibody (C-term) (Cat. #AP13107b) western blot analysis in mouse spleen tissue lysates (35ug/lane). This demonstrates the PQLC2 antibody detected the PQLC2 protein (arrow).



Anti-PQLC2 Antibody (C-term) at 1:1000 dilution + THP-1 whole cell lysate Lysates/proteins at 20 µg per lane. Secondary Goat Anti-Rabbit IgG, (H+L), Peroxidase conjugated at 1/10000 dilution. Predicted band size : 32 kDa Blocking/Dilution buffer: 5% NFDM/TBST.



PQLC2 Antibody (C-term) (Cat. #AP13107b) immunohistochemistry analysis in formalin fixed and paraffin embedded human testis tissue followed by peroxidase conjugation of the secondary antibody and DAB staining. This data demonstrates the use of PQLC2 Antibody (C-term) for immunohistochemistry. Clinical relevance has not been evaluated.

PQLC2 Antibody (C-term) - Background

The specific function of this protein remains unknown. There are 3 named isoforms.

PQLC2 Antibody (C-term) - References

Gregory, S.G., et al. Nature 441(7091):315-321(2006)