

LSM12 Antibody (C-term)
Affinity Purified Rabbit Polyclonal Antibody (Pab)
Catalog # AP13111B**Specification**

LSM12 Antibody (C-term) - Product Information

Application	IHC-P, WB,E
Primary Accession	Q3MHD2
Other Accession	Q9D0R8 , Q5ZML5 , Q0VCF9 , Q6NSN1 , NP_689557.1
Reactivity	Mouse
Predicted	Zebrafish, Bovine, Chicken
Host	Rabbit
Clonality	Polyclonal
Isotype	Rabbit IgG
Calculated MW	21701
Antigen Region	146-174

LSM12 Antibody (C-term) - Additional Information**Gene ID** 124801**Other Names**

Protein LSM12 homolog, LSM12

Target/Specificity

This LSM12 antibody is generated from rabbits immunized with a KLH conjugated synthetic peptide between 146-174 amino acids from the C-terminal region of human LSM12.

Dilution

IHC-P~~1:10~50

WB~~1:1000

E~~Use at an assay dependent concentration.

Format

Purified polyclonal antibody supplied in PBS with 0.09% (W/V) sodium azide. This antibody is purified through a protein A column, followed by peptide affinity purification.

Storage

Maintain refrigerated at 2-8°C for up to 2 weeks. For long term storage store at -20°C in small aliquots to prevent freeze-thaw cycles.

Precautions

LSM12 Antibody (C-term) is for research use only and not for use in diagnostic or therapeutic procedures.

LSM12 Antibody (C-term) - Protein Information

Name LSM12

Function Nicotinic acid adenine dinucleotide phosphate (NAADP) binding protein (PubMed:[34362892](#)). Confers NAADP sensitivity to the two pore channel complex (TPCs) by acting as TPC accessory protein necessary for NAADP-evoked Ca^{2+} release (PubMed:[34362892](#)).

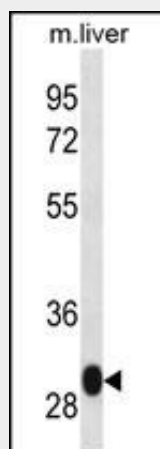
Cellular Location

Cytoplasm. Note=Colocalizes with TPCN2.

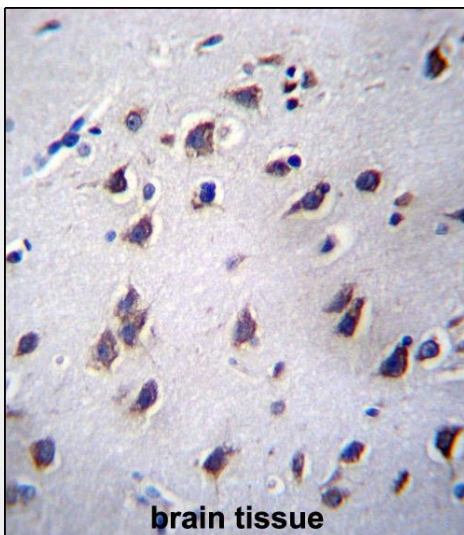
LSM12 Antibody (C-term) - Protocols

Provided below are standard protocols that you may find useful for product applications.

- [Western Blot](#)
- [Blocking Peptides](#)
- [Dot Blot](#)
- [Immunohistochemistry](#)
- [Immunofluorescence](#)
- [Immunoprecipitation](#)
- [Flow Cytometry](#)
- [Cell Culture](#)

LSM12 Antibody (C-term) - Images

LSM12 Antibody (C-term) (Cat. #AP13111b) western blot analysis in mouse liver tissue lysates (35ug/lane). This demonstrates the LSM12 antibody detected the LSM12 protein (arrow).



LSM12 Antibody (C-term) (Cat. #AP131111b) immunohistochemistry analysis in formalin fixed and paraffin embedded human brain tissue followed by peroxidase conjugation of the secondary antibody and DAB staining. This data demonstrates the use of LSM12 Antibody (C-term) for immunohistochemistry. Clinical relevance has not been evaluated.

LSM12 Antibody (C-term) - Background

LSM12 belongs to the LSM12 family. The exact function of LSM12 is not known.

LSM12 Antibody (C-term) - References

Ewing, R.M., et al. Mol. Syst. Biol. 3, 89 (2007) :
Albrecht, M., et al. FEBS Lett. 569 (1-3), 18-26 (2004) :