

PR15B Antibody (C-term)
Affinity Purified Rabbit Polyclonal Antibody (Pab)
Catalog # AP13118b

Specification

PR15B Antibody (C-term) - Product Information

| | |
|-------------------|-----------------------------|
| Application | WB, IHC-P,E |
| Primary Accession | Q5SWA1 |
| Other Accession | NP_116222.3 |
| Reactivity | Human |
| Host | Rabbit |
| Clonality | Polyclonal |
| Isotype | Rabbit IgG |
| Calculated MW | 79125 |
| Antigen Region | 494-522 |

PR15B Antibody (C-term) - Additional Information

Gene ID 84919

Other Names

Protein phosphatase 1 regulatory subunit 15B, PPP1R15B

Target/Specificity

This PR15B antibody is generated from rabbits immunized with a KLH conjugated synthetic peptide between 494-522 amino acids from the C-terminal region of human PR15B.

Dilution

WB~~1:1000

IHC-P~~1:10~50

Format

Purified polyclonal antibody supplied in PBS with 0.09% (W/V) sodium azide. This antibody is purified through a protein A column, followed by peptide affinity purification.

Storage

Maintain refrigerated at 2-8°C for up to 2 weeks. For long term storage store at -20°C in small aliquots to prevent freeze-thaw cycles.

Precautions

PR15B Antibody (C-term) is for research use only and not for use in diagnostic or therapeutic procedures.

PR15B Antibody (C-term) - Protein Information

Name PPP1R15B

Function Maintains low levels of EIF2S1 phosphorylation in unstressed cells by promoting its

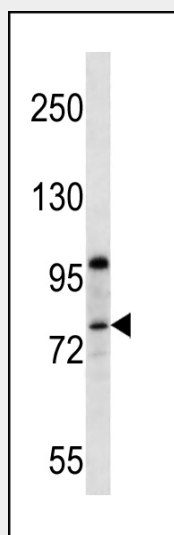
dephosphorylation by PP1.

PR15B Antibody (C-term) - Protocols

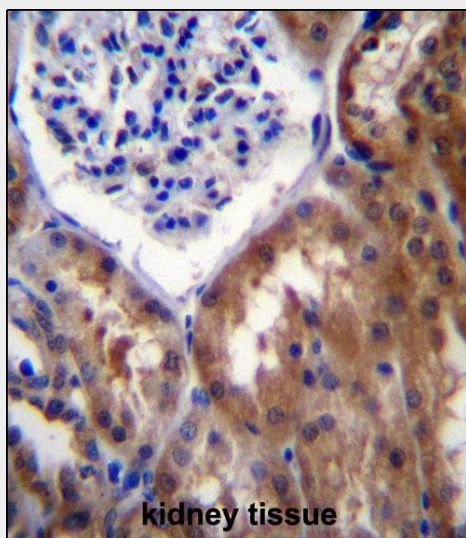
Provided below are standard protocols that you may find useful for product applications.

- [Western Blot](#)
- [Blocking Peptides](#)
- [Dot Blot](#)
- [Immunohistochemistry](#)
- [Immunofluorescence](#)
- [Immunoprecipitation](#)
- [Flow Cytometry](#)
- [Cell Culture](#)

PR15B Antibody (C-term) - Images



PR15B Antibody (C-term) (Cat. #AP13118b) western blot analysis in MCF-7 cell line lysates (35ug/lane). This demonstrates the PR15B antibody detected the PR15B protein (arrow).



PR15B Antibdy (C-term) (Cat. #AP13118b) immunohistochemistry analysis in formalin fixed and paraffin embedded human kidney tissue followed by peroxidase conjugation of the secondary antibody and DAB staining. This data demonstrates the use of PR15B Antibdy (C-term) for immunohistochemistry. Clinical relevance has not been evaluated.

PR15B Antibody (C-term) - Background

PPP1R15B promotes dephosphorylation of the transcription initiation factor EIF2-alpha (EIF2S1; MIM 603907) through recruitment of protein phosphatase-1 (PP1) catalytic subunits (see MIM 176875) (Harding et al., 2009 [PubMed 19181853]). [supplied by OMIM].

PR15B Antibody (C-term) - References

Harding, H.P., et al. Proc. Natl. Acad. Sci. U.S.A. 106(6):1832-1837(2009)
Colland, F., et al. Genome Res. 14(7):1324-1332(2004)
Ceulemans, H., et al. Bioessays 24(4):371-381(2002)