

**PYDC1 Antibody (Center)**  
**Affinity Purified Rabbit Polyclonal Antibody (Pab)**  
**Catalog # AP13124C**

**Specification**

---

**PYDC1 Antibody (Center) - Product Information**

Application	WB,E
Primary Accession	<a href="#">O8WXC3</a>
Other Accession	<a href="#">NP_690865.1</a>
Reactivity	Human
Host	Rabbit
Clonality	Polyclonal
Isotype	Rabbit IgG
Calculated MW	10107
Antigen Region	13-42

**PYDC1 Antibody (Center) - Additional Information**

**Gene ID** 260434

**Other Names**

Pyrin domain-containing protein 1, PAAD-only protein 1, Pyrin-only protein 1, PYDC1, ASC2, ASCI, POP1, PYC1

**Target/Specificity**

This PYDC1 antibody is generated from rabbits immunized with a KLH conjugated synthetic peptide between 13-42 amino acids from the Central region of human PYDC1.

**Dilution**

WB~~1:1000

**Format**

Purified polyclonal antibody supplied in PBS with 0.09% (W/V) sodium azide. This antibody is purified through a protein A column, followed by peptide affinity purification.

**Storage**

Maintain refrigerated at 2-8°C for up to 2 weeks. For long term storage store at -20°C in small aliquots to prevent freeze-thaw cycles.

**Precautions**

PYDC1 Antibody (Center) is for research use only and not for use in diagnostic or therapeutic procedures.

**PYDC1 Antibody (Center) - Protein Information**

**Name** PYDC1 ([HGNC:30261](#))

**Function** Associates with PYCARD/ASC and modulates its ability to collaborate with MEFV/pyrin

and NLRP3/cryopyrin in NF-kappa-B and pro-caspase-1 activation. Suppresses kinase activity of NF-kappa-B inhibitor kinase (IKK) complex, expression of NF-kappa-B inducible genes and inhibits NF-kappa-B activation by cytokines and LPS.

#### Cellular Location

Cytoplasm. Note=Recruited to specks formed by PYCARD within the cytoplasm

#### Tissue Location

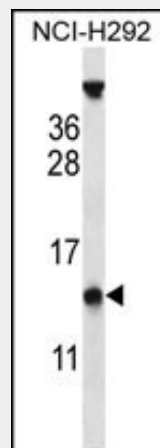
Predominantly expressed in monocytes, macrophages and granulocytes.

### PYDC1 Antibody (Center) - Protocols

Provided below are standard protocols that you may find useful for product applications.

- [Western Blot](#)
- [Blocking Peptides](#)
- [Dot Blot](#)
- [Immunohistochemistry](#)
- [Immunofluorescence](#)
- [Immunoprecipitation](#)
- [Flow Cytometry](#)
- [Cell Culture](#)

### PYDC1 Antibody (Center) - Images



PYDC1 Antibody (Center) (Cat. #AP13124c) western blot analysis in NCI-H292 cell line lysates (35ug/lane). This demonstrates the PYDC1 antibody detected the PYDC1 protein (arrow).

### PYDC1 Antibody (Center) - Background

PYDC1 associates with apoptosis-associated specklike protein containing a CARD domain (ASC) and modulates its ability to collaborate with pyrin and cryopyrin in NF-kappa-B and pro-caspase-1 activation. Suppresses kinase activity of NF-kappa-B inhibitor kinase (IKK) complex, expression of NF-kappa-B inducible genes and inhibits NF-kappa-B activation by cytokines and LPS.

### PYDC1 Antibody (Center) - References

- Son, Y.L., et al. *Biochem. J.* 410(2):319-330(2008)  
Natarajan, A., et al. *J. Biol. Chem.* 281(42):31863-31875(2006)  
Espejo, F., et al. *Biochem. Biophys. Res. Commun.* 340(3):860-864(2006)

Stehlik, C., et al. *Biochem. J.* 373 (PT 1), 101-113 (2003) :  
Pawlowski, K., et al. *Trends Biochem. Sci.* 26(2):85-87(2001)