

**RARRES1 Antibody (C-term)**  
**Affinity Purified Rabbit Polyclonal Antibody (Pab)**  
**Catalog # AP13138b****Specification**

---

**RARRES1 Antibody (C-term) - Product Information**

Application	IHC-P, WB,E
Primary Accession	<a href="#">P49788</a>
Other Accession	<a href="#">NP_002879.2</a> , <a href="#">NP_996846.1</a>
Reactivity	Human
Host	Rabbit
Clonality	Polyclonal
Isotype	Rabbit IgG
Calculated MW	33285
Antigen Region	134-163

**RARRES1 Antibody (C-term) - Additional Information****Gene ID** 5918**Other Names**

Retinoic acid receptor responder protein 1, Phorbol ester-induced gene 1 protein, PERG-1, RAR-responsive protein TIG1, Tazarotene-induced gene 1 protein, RARRES1, PEIG1, TIG1

**Target/Specificity**

This RARRES1 antibody is generated from rabbits immunized with a KLH conjugated synthetic peptide between 134-163 amino acids from the C-terminal region of human RARRES1.

**Dilution**

IHC-P~~1:10~50

WB~~1:1000

E~~Use at an assay dependent concentration.

**Format**

Purified polyclonal antibody supplied in PBS with 0.09% (W/V) sodium azide. This antibody is purified through a protein A column, followed by peptide affinity purification.

**Storage**

Maintain refrigerated at 2-8°C for up to 2 weeks. For long term storage store at -20°C in small aliquots to prevent freeze-thaw cycles.

**Precautions**

RARRES1 Antibody (C-term) is for research use only and not for use in diagnostic or therapeutic procedures.

**RARRES1 Antibody (C-term) - Protein Information****Name** RARRES1

**Synonyms** PEIG1, TIG1

**Function** Inhibitor of the cytoplasmic carboxypeptidase AGBL2, may regulate the alpha-tubulin tyrosination cycle.

**Cellular Location**

Membrane; Single- pass type III membrane protein. Secreted

**Tissue Location**

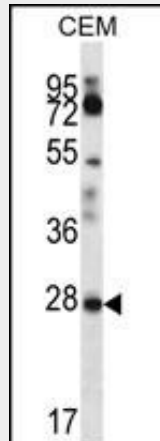
Detected in urine (at protein level).

**RARRES1 Antibody (C-term) - Protocols**

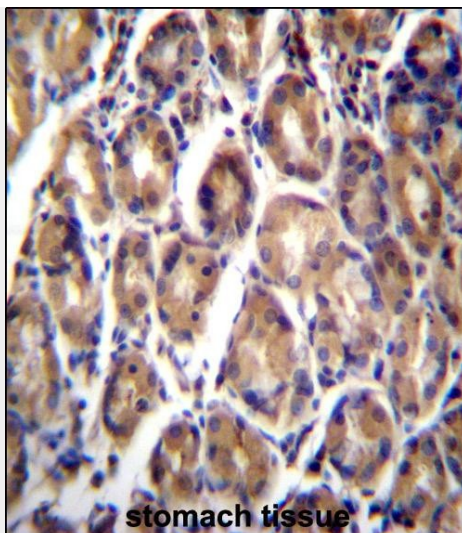
Provided below are standard protocols that you may find useful for product applications.

- [Western Blot](#)
- [Blocking Peptides](#)
- [Dot Blot](#)
- [Immunohistochemistry](#)
- [Immunofluorescence](#)
- [Immunoprecipitation](#)
- [Flow Cytometry](#)
- [Cell Culture](#)

**RARRES1 Antibody (C-term) - Images**



RARRES1 Antibody (C-term) (Cat. #AP13138b) western blot analysis in CEM cell line lysates (35ug/lane). This demonstrates the RARRES1 antibody detected the RARRES1 protein (arrow).



RARRES1 Antibody (C-term) (Cat. #AP13138b) immunohistochemistry analysis in formalin fixed and paraffin embedded human stomach tissue followed by peroxidase conjugation of the secondary antibody and DAB staining. This data demonstrates the use of RARRES1 Antibody (C-term) for immunohistochemistry. Clinical relevance has not been evaluated.

#### **RARRES1 Antibody (C-term) - Background**

This gene was identified as a retinoid acid (RA) receptor-responsive gene. It encodes a type 1 membrane protein. The expression of this gene is upregulated by tazarotene as well as by retinoic acid receptors. The expression of this gene is found to be downregulated in prostate cancer, which is caused by the methylation of its promoter and CpG island. Alternatively spliced transcript variant encoding distinct isoforms have been observed.

#### **RARRES1 Antibody (C-term) - References**

Wheeler, H.E., et al. PLoS Genet. 5 (10), E1000685 (2009) :  
Kwok, W.K., et al. Cancer Genet. Cytogenet. 194(1):58-64(2009)  
Ohnishi, S., et al. Cell Prolif. 42(3):309-316(2009)  
Son, M.S., et al. Oncol. Res. 17 (11-12), 571-580 (2009) :  
Shutoh, M., et al. Cancer 104(8):1609-1619(2005)