

PCDHA12 Antibody (N-term)
Affinity Purified Rabbit Polyclonal Antibody (Pab)
Catalog # AP13139A

Specification

PCDHA12 Antibody (N-term) - Product Information

Application	IHC-P, WB,E
Primary Accession	Q9UN75
Other Accession	NP_061726.1 , NP_114070.1
Reactivity	Human
Host	Rabbit
Clonality	Polyclonal
Isotype	Rabbit IgG
Calculated MW	101652
Antigen Region	166-194

PCDHA12 Antibody (N-term) - Additional Information

Gene ID 56137

Other Names

Protocadherin alpha-12, PCDH-alpha-12, PCDHA12

Target/Specificity

This PCDHA12 antibody is generated from rabbits immunized with a KLH conjugated synthetic peptide between 166-194 amino acids from the N-terminal region of human PCDHA12.

Dilution

IHC-P~~1:10~50

WB~~1:1000

E~~Use at an assay dependent concentration.

Format

Purified polyclonal antibody supplied in PBS with 0.09% (W/V) sodium azide. This antibody is purified through a protein A column, followed by peptide affinity purification.

Storage

Maintain refrigerated at 2-8°C for up to 2 weeks. For long term storage store at -20°C in small aliquots to prevent freeze-thaw cycles.

Precautions

PCDHA12 Antibody (N-term) is for research use only and not for use in diagnostic or therapeutic procedures.

PCDHA12 Antibody (N-term) - Protein Information

Name PCDHA12

Function Potential calcium-dependent cell-adhesion protein. May be involved in the establishment and maintenance of specific neuronal connections in the brain.

Cellular Location

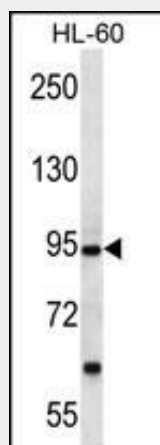
Cell membrane; Single-pass type I membrane protein

PCDHA12 Antibody (N-term) - Protocols

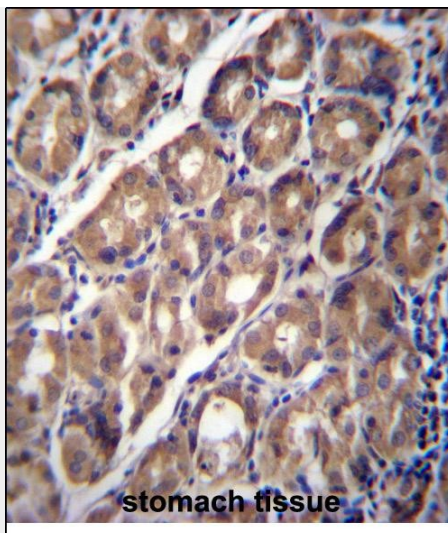
Provided below are standard protocols that you may find useful for product applications.

- [Western Blot](#)
- [Blocking Peptides](#)
- [Dot Blot](#)
- [Immunohistochemistry](#)
- [Immunofluorescence](#)
- [Immunoprecipitation](#)
- [Flow Cytometry](#)
- [Cell Culture](#)

PCDHA12 Antibody (N-term) - Images



PCDHA12 Antibody (N-term) (Cat. #AP13139a) western blot analysis in HL-60 cell line lysates (35ug/lane). This demonstrates the PCDHA12 antibody detected the PCDHA12 protein (arrow).



PCDHA12 Antibody (N-term) (Cat. #AP13139a) immunohistochemistry analysis in formalin fixed and paraffin embedded human stomach tissue followed by peroxidase conjugation of the secondary antibody and DAB staining. This data demonstrates the use of PCDHA12 Antibody (N-term) for immunohistochemistry. Clinical relevance has not been evaluated.

PCDHA12 Antibody (N-term) - Background

This gene is a member of the protocadherin alpha gene cluster, one of three related gene clusters tandemly linked on chromosome five that demonstrate an unusual genomic organization similar to that of B-cell and T-cell receptor gene clusters. The alpha gene cluster is composed of 15 cadherin superfamily genes related to the mouse CNR genes and consists of 13 highly similar and 2 more distantly related coding sequences. The tandem array of 15 N-terminal exons, or variable exons, are followed by downstream C-terminal exons, or constant exons, which are shared by all genes in the cluster. The large, uninterrupted N-terminal exons each encode six cadherin ectodomains while the C-terminal exons encode the cytoplasmic domain. These neural cadherin-like cell adhesion proteins are integral plasma membrane proteins that most likely play a critical role in the establishment and function of specific cell-cell connections in the brain. Alternative splicing has been observed and additional variants have been suggested but their full-length nature has yet to be determined.

PCDHA12 Antibody (N-term) - References

Wu, C., et al. Proteomics 7(11):1775-1785(2007)
Schmutz, J., et al. Nature 431(7006):268-274(2004)
Wu, Q., et al. Genome Res. 11(3):389-404(2001)
Nollet, F., et al. J. Mol. Biol. 299(3):551-572(2000)
Yagi, T., et al. Genes Dev. 14(10):1169-1180(2000)