

PLS1 Antibody (C-term)
Affinity Purified Rabbit Polyclonal Antibody (Pab)
Catalog # AP13147b

Specification

PLS1 Antibody (C-term) - Product Information

Application	IHC-P, WB,E
Primary Accession	Q14651
Other Accession	NP_001165783.1 , NP_001138791.1
Reactivity	Human
Host	Rabbit
Clonality	Polyclonal
Isotype	Rabbit IgG
Antigen Region	550-579

PLS1 Antibody (C-term) - Additional Information

Gene ID 5357

Other Names

Plastin-1, Intestine-specific plastin, I-plastin, PLS1

Target/Specificity

This PLS1 antibody is generated from rabbits immunized with a KLH conjugated synthetic peptide between 550-579 amino acids from the C-terminal region of human PLS1.

Dilution

IHC-P~~1:10~50

WB~~1:1000

E~~Use at an assay dependent concentration.

Format

Purified polyclonal antibody supplied in PBS with 0.09% (W/V) sodium azide. This antibody is purified through a protein A column, followed by peptide affinity purification.

Storage

Maintain refrigerated at 2-8°C for up to 2 weeks. For long term storage store at -20°C in small aliquots to prevent freeze-thaw cycles.

Precautions

PLS1 Antibody (C-term) is for research use only and not for use in diagnostic or therapeutic procedures.

PLS1 Antibody (C-term) - Protein Information

Name PLS1

Function Actin-bundling protein. In the inner ear, it is required for stereocilia formation. Mediates

liquid packing of actin filaments that is necessary for stereocilia to grow to their proper dimensions.

Cellular Location

Cytoplasm {ECO:0000250|UniProtKB:Q3V0K9}. Cell projection, stereocilium {ECO:0000250|UniProtKB:Q3V0K9}

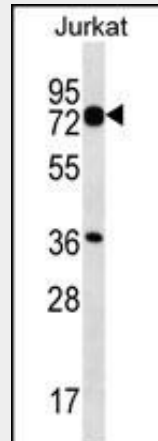
Tissue Location

In small intestine, colon, and kidney; relatively lower levels of expression are detected in the lung and stomach

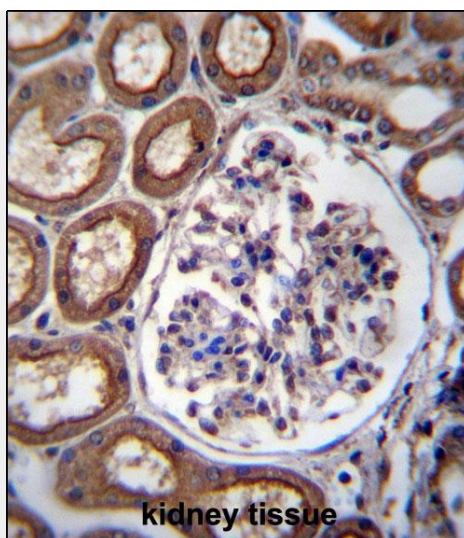
PLS1 Antibody (C-term) - Protocols

Provided below are standard protocols that you may find useful for product applications.

- [Western Blot](#)
- [Blocking Peptides](#)
- [Dot Blot](#)
- [Immunohistochemistry](#)
- [Immunofluorescence](#)
- [Immunoprecipitation](#)
- [Flow Cytometry](#)
- [Cell Culture](#)

PLS1 Antibody (C-term) - Images

PLS1 Antibody (C-term) (Cat. #AP13147b) western blot analysis in Jurkat cell line lysates (35ug/lane). This demonstrates the PLS1 antibody detected the PLS1 protein (arrow).



PLS1 Antibody (C-term) (Cat. #AP13147b) immunohistochemistry analysis in formalin fixed and paraffin embedded human kidney tissue followed by peroxidase conjugation of the secondary antibody and DAB staining. This data demonstrates the use of PLS1 Antibody (C-term) for immunohistochemistry. Clinical relevance has not been evaluated.

PLS1 Antibody (C-term) - Background

Plastins are a family of actin-binding proteins that are conserved throughout eukaryote evolution and expressed in most tissues of higher eukaryotes. In humans, two ubiquitous plastin isoforms (L and T) have been identified. The protein encoded by this gene is a third distinct plastin isoform, which is specifically expressed at high levels in the small intestine. Alternatively spliced transcript variants varying in the 5' UTR, but encoding the same protein, have been found for this gene. A pseudogene of this gene is found on chromosome 11.

PLS1 Antibody (C-term) - References

Chafel, M.M., et al. Dev. Dyn. 203(2):141-151(1995)
Lin, C.S., et al. Mol. Cell. Biol. 14(4):2457-2467(1994)
Shibata, M., et al. J. Leukoc. Biol. 54(1):10-16(1993)
Lin, C.S., et al. J. Biol. Chem. 268(4):2781-2792(1993)
Zu, Y., et al. Biochemistry 29(4):1055-1062(1990)

PLS1 Antibody (C-term) - Citations

- [Enteral delivery of proteins enhances the expression of proteins involved in the cytoskeleton and protein biosynthesis in human duodenal mucosa.](#)