

**TM9SF2 Antibody (N-term)**  
**Affinity Purified Rabbit Polyclonal Antibody (Pab)**  
**Catalog # AP13152A**

**Specification**

---

**TM9SF2 Antibody (N-term) - Product Information**

Application	WB, IHC-P,E
Primary Accession	<a href="#">Q99805</a>
Other Accession	<a href="#">NP_004791.1</a>
Reactivity	Human
Host	Rabbit
Clonality	Polyclonal
Isotype	Rabbit IgG
Calculated MW	75776
Antigen Region	111-140

**TM9SF2 Antibody (N-term) - Additional Information**

**Gene ID** 9375

**Other Names**

Transmembrane 9 superfamily member 2, p76, TM9SF2

**Target/Specificity**

This TM9SF2 antibody is generated from rabbits immunized with a KLH conjugated synthetic peptide between 111-140 amino acids from the N-terminal region of human TM9SF2.

**Dilution**

WB~~1:1000

IHC-P~~1:10~50

E~~Use at an assay dependent concentration.

**Format**

Purified polyclonal antibody supplied in PBS with 0.09% (W/V) sodium azide. This antibody is purified through a protein A column, followed by peptide affinity purification.

**Storage**

Maintain refrigerated at 2-8°C for up to 2 weeks. For long term storage store at -20°C in small aliquots to prevent freeze-thaw cycles.

**Precautions**

TM9SF2 Antibody (N-term) is for research use only and not for use in diagnostic or therapeutic procedures.

**TM9SF2 Antibody (N-term) - Protein Information**

**Name** TM9SF2

**Function** In the intracellular compartments, may function as a channel or small molecule transporter.

#### Cellular Location

Endosome membrane; Multi-pass membrane protein. Golgi outpost {ECO:0000250|UniProtKB:Q66HG5}. Cytoplasm, cytoskeleton, microtubule organizing center {ECO:0000250|UniProtKB:Q66HG5}. Note=Localizes to the postsynaptic Golgi apparatus region, also named Golgi outpost, which shapes dendrite morphology by functioning as sites of acentrosomal microtubule nucleation. {ECO:0000250|UniProtKB:Q66HG5}

#### Tissue Location

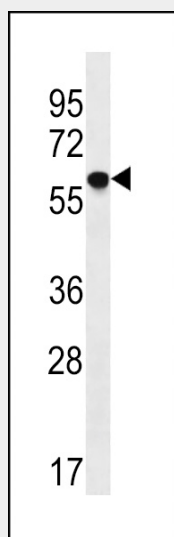
Ubiquitously expressed. Especially abundant in pancreas, highly expressed in kidney, lower levels in heart, brain, skeletal muscle and placenta. Lowest expression in lung and liver

### TM9SF2 Antibody (N-term) - Protocols

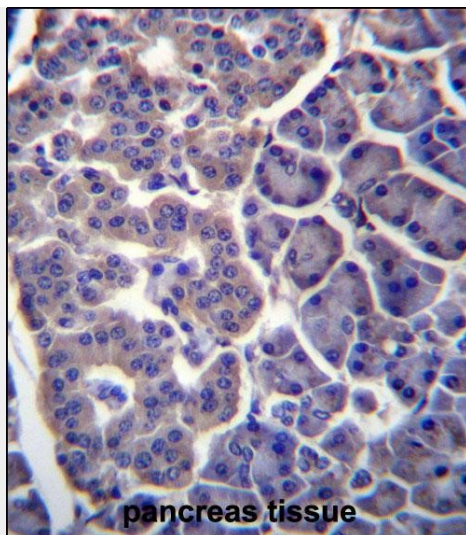
Provided below are standard protocols that you may find useful for product applications.

- [Western Blot](#)
- [Blocking Peptides](#)
- [Dot Blot](#)
- [Immunohistochemistry](#)
- [Immunofluorescence](#)
- [Immunoprecipitation](#)
- [Flow Cytometry](#)
- [Cell Culture](#)

### TM9SF2 Antibody (N-term) - Images



TM9SF2 Antibody (N-term) (Cat. #AP13152a) western blot analysis in U251 cell line lysates (35ug/lane). This demonstrates the TM9SF2 antibody detected the TM9SF2 protein (arrow).



TM9SF2 Antibody (N-term) (Cat. #AP13152a) immunohistochemistry analysis in formalin fixed and paraffin embedded human pancreas tissue followed by peroxidase conjugation of the secondary antibody and DAB staining. This data demonstrates the use of TM9SF2 Antibody (N-term) for immunohistochemistry. Clinical relevance has not been evaluated.

#### **TM9SF2 Antibody (N-term) - Background**

In the intracellular compartments, may function as a channel or small molecule transporter.

#### **TM9SF2 Antibody (N-term) - References**

Rose, J. Phd, et al. Mol. Med. (2010) In press :  
Colland, F., et al. Genome Res. 14(7):1324-1332(2004)  
Dunham, A., et al. Nature 428(6982):522-528(2004)  
Schimmoller, F., et al. Gene 216(2):311-318(1998)  
Diaz, E., et al. J. Cell Biol. 138(2):283-290(1997)