

**CX001 Antibody (C-term)**  
**Affinity Purified Rabbit Polyclonal Antibody (Pab)**  
**Catalog # AP13165b****Specification**

---

**CX001 Antibody (C-term) - Product Information**

Application	WB,E
Primary Accession	<a href="#">O96002</a>
Other Accession	<a href="#">NP_004700.1</a>
Reactivity	Human
Host	Rabbit
Clonality	Polyclonal
Isotype	Rabbit IgG
Calculated MW	13452
Antigen Region	62-90

**CX001 Antibody (C-term) - Additional Information****Other Names**

Transmembrane protein 257, TMEM257, CXorf1

**Target/Specificity**

This CX001 antibody is generated from rabbits immunized with a KLH conjugated synthetic peptide between 62-90 amino acids from the C-terminal region of human CX001.

**Dilution**

WB~~1:1000

E~~Use at an assay dependent concentration.

**Format**

Purified polyclonal antibody supplied in PBS with 0.09% (W/V) sodium azide. This antibody is purified through a protein A column, followed by peptide affinity purification.

**Storage**

Maintain refrigerated at 2-8°C for up to 2 weeks. For long term storage store at -20°C in small aliquots to prevent freeze-thaw cycles.

**Precautions**

CX001 Antibody (C-term) is for research use only and not for use in diagnostic or therapeutic procedures.

**CX001 Antibody (C-term) - Protein Information**

**Name** CXorf1 {ECO:0000303|PubMed:9881668}

**Cellular Location**

Membrane; Multi-pass membrane protein

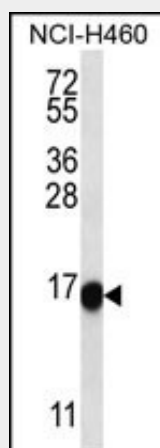
**Tissue Location**

Brain. In the hippocampus it is mainly localized in the granular-cell layer of the dentate gyrus and in the CA2-CA3 subfields of Ammon's horn.

**CX001 Antibody (C-term) - Protocols**

Provided below are standard protocols that you may find useful for product applications.

- [Western Blot](#)
- [Blocking Peptides](#)
- [Dot Blot](#)
- [Immunohistochemistry](#)
- [Immunofluorescence](#)
- [Immunoprecipitation](#)
- [Flow Cytometry](#)
- [Cell Culture](#)

**CX001 Antibody (C-term) - Images**

CX001 Antibody (C-term) (Cat. #AP13165b) western blot analysis in NCI-H460 cell line lysates (35ug/lane). This demonstrates the CX001 antibody detected the CX001 protein (arrow).

**CX001 Antibody (C-term) - Background**

This intronless gene is expressed in the hippocampus and maps close to a candidate region for several X-linked mental retardation (XLMR) syndromes. It is conserved in primates, cow, and horse, but not found in mouse and rat. The exact function of this gene is not known, but on the basis of its physical location and expression pattern, it is proposed to have an important function in the brain.

**CX001 Antibody (C-term) - References**

Ross, M.T., et al. Nature 434(7031):325-337(2005)  
Redolfi, E., et al. DNA Cell Biol. 17(12):1009-1016(1998)