

**HEBP2 Antibody (N-term)**  
**Affinity Purified Rabbit Polyclonal Antibody (Pab)**  
**Catalog # AP13181a****Specification**

---

**HEBP2 Antibody (N-term) - Product Information**

Application	WB,E
Primary Accession	<a href="#">O9Y5Z4</a>
Other Accession	<a href="#">O9WU63</a> , <a href="#">NP_055135.1</a>
Reactivity	Human
Predicted	Mouse
Host	Rabbit
Clonality	Polyclonal
Isotype	Rabbit IgG
Calculated MW	22875
Antigen Region	18-47

**HEBP2 Antibody (N-term) - Additional Information****Gene ID** 23593**Other Names**

Heme-binding protein 2, Placental protein 23, PP23, Protein SOUL, HEBP2, C6orf34, SOUL

**Target/Specificity**

This HEBP2 antibody is generated from rabbits immunized with a KLH conjugated synthetic peptide between 18-47 amino acids from the N-terminal region of human HEBP2.

**Dilution**

WB~~1:1000

E~~Use at an assay dependent concentration.

**Format**

Purified polyclonal antibody supplied in PBS with 0.09% (W/V) sodium azide. This antibody is purified through a protein A column, followed by peptide affinity purification.

**Storage**

Maintain refrigerated at 2-8°C for up to 2 weeks. For long term storage store at -20°C in small aliquots to prevent freeze-thaw cycles.

**Precautions**

HEBP2 Antibody (N-term) is for research use only and not for use in diagnostic or therapeutic procedures.

**HEBP2 Antibody (N-term) - Protein Information****Name** HEBP2

**Synonyms** C6orf34, SOUL

**Function** Can promote mitochondrial permeability transition and facilitate necrotic cell death under different types of stress conditions.

**Cellular Location**

Cytoplasm. Mitochondrion. Note=Mainly localized to the cytoplasm with a much lower abundance in the mitochondrion

**Tissue Location**

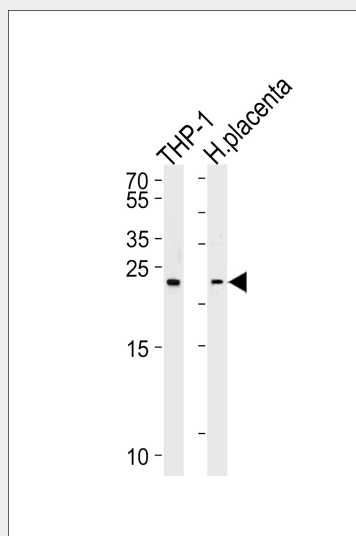
Detected in placenta..

### HEBP2 Antibody (N-term) - Protocols

Provided below are standard protocols that you may find useful for product applications.

- [Western Blot](#)
- [Blocking Peptides](#)
- [Dot Blot](#)
- [Immunohistochemistry](#)
- [Immunofluorescence](#)
- [Immunoprecipitation](#)
- [Flow Cytometry](#)
- [Cell Culture](#)

### HEBP2 Antibody (N-term) - Images



Western blot analysis of lysates from THP-1 cell line and human placenta tissue lysates (from left to right), using HEBP2 Antibody (N-term)(Cat. #AP13181a). AP13181a was diluted at 1:1000 at each lane. A goat anti-rabbit IgG H&L(HRP) at 1:5000 dilution was used as the secondary antibody. Lysates at 35ug per lane.

### HEBP2 Antibody (N-term) - Background

HEBP2 can promote mitochondrial permeability transition and facilitate necrotic cell death under different types of stress conditions.

**HEBP2 Antibody (N-term) - References**

Szigeti, A., et al. J. Biol. Chem. 285(3):2140-2151(2010)  
Freire, F., et al. Acta Crystallogr. Sect. F Struct. Biol. Cryst. Commun. 65 (PT 7), 723-726 (2009) :  
Szigeti, A., et al. FEBS Lett. 580(27):6447-6454(2006)  
Mungall, A.J., et al. Nature 425(6960):805-811(2003)  
Liu, L., et al. Genomics 79(1):124-136(2002)