

PCDH9 Antibody (C-term)
Affinity Purified Rabbit Polyclonal Antibody (Pab)
Catalog # AP13185b

Specification

PCDH9 Antibody (C-term) - Product Information

Application	IHC-P-Leica, WB,E
Primary Accession	Q9HC56
Other Accession	NP_982354.1 , NP_065136.1
Reactivity	Human
Host	Rabbit
Clonality	Polyclonal
Isotype	Rabbit IgG
Calculated MW	136064
Antigen Region	1018-1046

PCDH9 Antibody (C-term) - Additional Information

Gene ID 5101

Other Names

Protocadherin-9, PCDH9

Target/Specificity

This PCDH9 antibody is generated from rabbits immunized with a KLH conjugated synthetic peptide between 1018-1046 amino acids from the C-terminal region of human PCDH9.

Dilution

IHC-P-Leica~~1:500

WB~~1:2000

E~~Use at an assay dependent concentration.

Format

Purified polyclonal antibody supplied in PBS with 0.09% (W/V) sodium azide. This antibody is purified through a protein A column, followed by peptide affinity purification.

Storage

Maintain refrigerated at 2-8°C for up to 2 weeks. For long term storage store at -20°C in small aliquots to prevent freeze-thaw cycles.

Precautions

PCDH9 Antibody (C-term) is for research use only and not for use in diagnostic or therapeutic procedures.

PCDH9 Antibody (C-term) - Protein Information

Name PCDH9

Function Potential calcium-dependent cell-adhesion protein.

Cellular Location

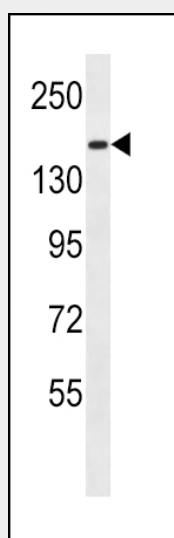
Cell membrane; Single-pass type I membrane protein

PCDH9 Antibody (C-term) - Protocols

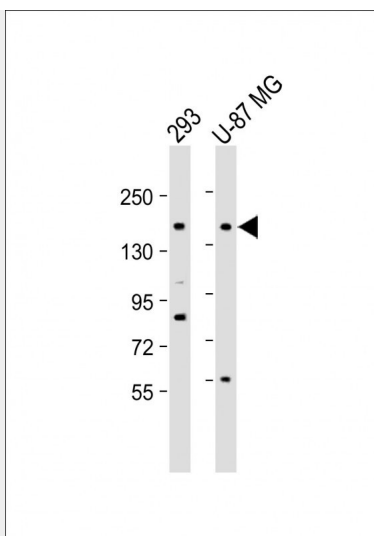
Provided below are standard protocols that you may find useful for product applications.

- [Western Blot](#)
- [Blocking Peptides](#)
- [Dot Blot](#)
- [Immunohistochemistry](#)
- [Immunofluorescence](#)
- [Immunoprecipitation](#)
- [Flow Cytometry](#)
- [Cell Culture](#)

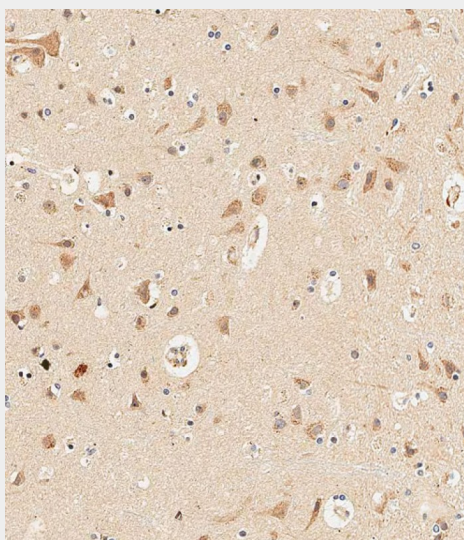
PCDH9 Antibody (C-term) - Images



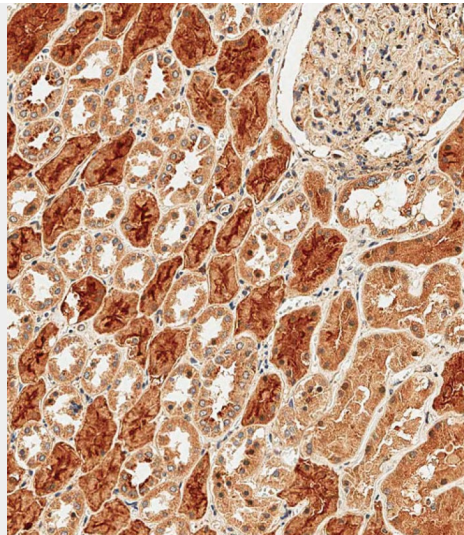
PCDH9 Antibody (C-term) (Cat. #AP13185b) western blot analysis in MDA-MB435 cell line lysates (35ug/lane). This demonstrates the PCDH9 antibody detected the PCDH9 protein (arrow).



All lanes : Anti-PCDH9 Antibody (C-term) at 1:2000 dilution Lane 1: 293 whole cell lysate Lane 2: U-87 MG whole cell lysate Lysates/proteins at 20 µg per lane. Secondary Goat Anti-Rabbit IgG, (H+L), Peroxidase conjugated at 1/10000 dilution. Predicted band size : 136 kDa Blocking/Dilution buffer: 5% NFDM/TBST.



Immunohistochemical analysis of paraffin-embedded Human brain tissue using AP13185B performed on the Leica® BOND RXm. Tissue was fixed with formaldehyde at room temperature, antigen retrieval was by heat mediation with a EDTA buffer (pH9. 0). Samples were incubated with primary antibody(1:500) for 1 hours at room temperature. A undiluted biotinylated CRF Anti-Polyvalent HRP Polymer antibody was used as the secondary antibody.



Immunohistochemical analysis of paraffin-embedded Human kidney tissue using AP13185B performed on the Leica® BOND RXm. Tissue was fixed with formaldehyde at room temperature, antigen retrieval was by heat mediation with a EDTA buffer (pH9.0). Samples were incubated with primary antibody(1:500) for 1 hours at room temperature. A undiluted biotinylated CRF Anti-Polyvalent HRP Polymer antibody was used as the secondary antibody.

PCDH9 Antibody (C-term) - Background

This gene belongs to the protocadherin gene family, a subfamily of the cadherin superfamily. The mRNA encodes a cadherin-related neuronal receptor that localizes to synaptic junctions and is putatively involved in specific neuronal connections and signal transduction. Sharing a characteristic with other protocadherin genes, this gene has a notably large exon that encodes six cadherin domains and a transmembrane region. Two alternatively spliced transcript variants encoding distinct isoforms have been found for this gene.

PCDH9 Antibody (C-term) - References

Bailey, S.D., et al. Diabetes Care 33(10):2250-2253(2010)
Rose, J.E., et al. Mol. Med. 16 (7-8), 247-253 (2010) :
Talmud, P.J., et al. Am. J. Hum. Genet. 85(5):628-642(2009)
Nollet, F., et al. J. Mol. Biol. 299(3):551-572(2000)
Yagi, T., et al. Genes Dev. 14(10):1169-1180(2000)