

LRRC37B Antibody (C-term)
Affinity Purified Rabbit Polyclonal Antibody (Pab)
Catalog # AP13189B

Specification

LRRC37B Antibody (C-term) - Product Information

Application	WB, IHC-P,E
Primary Accession	O96QE4
Other Accession	NP_443120.2
Reactivity	Human
Host	Rabbit
Clonality	Polyclonal
Isotype	Rabbit IgG
Calculated MW	105567
Antigen Region	862-890

LRRC37B Antibody (C-term) - Additional Information

Gene ID 114659

Other Names

Leucine-rich repeat-containing protein 37B, C66 SLIT-like testicular protein, LRRC37B

Target/Specificity

This LRRC37B antibody is generated from rabbits immunized with a KLH conjugated synthetic peptide between 862-890 amino acids from the C-terminal region of human LRRC37B.

Dilution

WB~~1:1000
IHC-P~~1:10~50

Format

Purified polyclonal antibody supplied in PBS with 0.09% (W/V) sodium azide. This antibody is purified through a protein A column, followed by peptide affinity purification.

Storage

Maintain refrigerated at 2-8°C for up to 2 weeks. For long term storage store at -20°C in small aliquots to prevent freeze-thaw cycles.

Precautions

LRRC37B Antibody (C-term) is for research use only and not for use in diagnostic or therapeutic procedures.

LRRC37B Antibody (C-term) - Protein Information

Name LRRC37B

Cellular Location

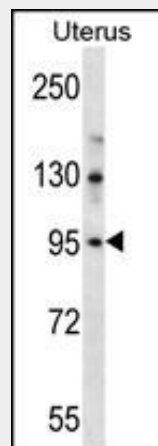
Membrane; Single-pass type I membrane protein

LRRC37B Antibody (C-term) - Protocols

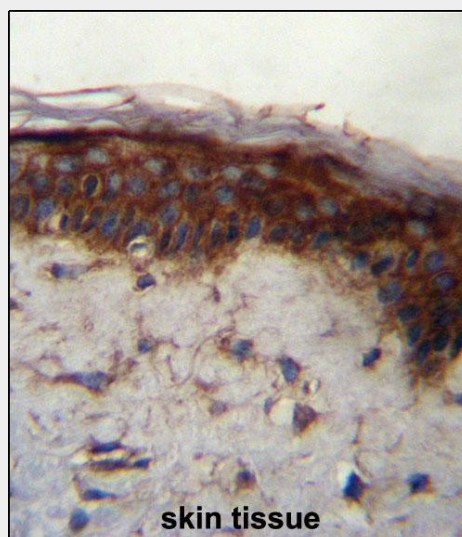
Provided below are standard protocols that you may find useful for product applications.

- [Western Blot](#)
- [Blocking Peptides](#)
- [Dot Blot](#)
- [Immunohistochemistry](#)
- [Immunofluorescence](#)
- [Immunoprecipitation](#)
- [Flow Cytometry](#)
- [Cell Culture](#)

LRRC37B Antibody (C-term) - Images



LRRC37B Antibody (C-term) (Cat. #AP13189b) western blot analysis in human normal Uterus tissue lysates (35ug/lane). This demonstrates the LRRC37B antibody detected the LRRC37B protein (arrow).



LRRC37B Antibody (C-term) (Cat. #AP13189b) immunohistochemistry analysis in formalin fixed

and paraffin embedded human skin tissue followed by peroxidase conjugation of the secondary antibody and DAB staining. This data demonstrates the use of LRR37B Antibody (C-term) for immunohistochemistry. Clinical relevance has not been evaluated.

LRR37B Antibody (C-term) - Background

The specific function of this protein remains unknown.

LRR37B Antibody (C-term) - References

Visser, R., et al. Am. J. Med. Genet. A 149A (4), 806-808 (2009) : Douglas, J., et al. Nat. Genet. 39(8):963-965(2007) Zody, M.C., et al. Nature 440(7087):1045-1049(2006) Forbes, S.H., et al. Genes Chromosomes Cancer 41(1):12-25(2004) Jenne, D.E., et al. Am. J. Hum. Genet. 69(3):516-527(2001)