

**FGD2 Antibody (C-term)**  
**Affinity Purified Rabbit Polyclonal Antibody (Pab)**  
**Catalog # AP13191b****Specification**

---

**FGD2 Antibody (C-term) - Product Information**

Application	WB, IHC-P,E
Primary Accession	<a href="#">Q7Z6J4</a>
Other Accession	<a href="#">NP_775829.2</a>
Reactivity	Mouse
Host	Rabbit
Clonality	Polyclonal
Isotype	Rabbit IgG
Calculated MW	74892
Antigen Region	508-537

**FGD2 Antibody (C-term) - Additional Information****Gene ID** 221472**Other Names**

FYVE, RhoGEF and PH domain-containing protein 2, Zinc finger FYVE domain-containing protein 4, FGD2, ZFYVE4

**Target/Specificity**

This FGD2 antibody is generated from rabbits immunized with a KLH conjugated synthetic peptide between 508-537 amino acids from the C-terminal region of human FGD2.

**Dilution**

WB~~1:1000

IHC-P~~1:10~50

**Format**

Purified polyclonal antibody supplied in PBS with 0.09% (W/V) sodium azide. This antibody is purified through a protein A column, followed by peptide affinity purification.

**Storage**

Maintain refrigerated at 2-8°C for up to 2 weeks. For long term storage store at -20°C in small aliquots to prevent freeze-thaw cycles.

**Precautions**

FGD2 Antibody (C-term) is for research use only and not for use in diagnostic or therapeutic procedures.

**FGD2 Antibody (C-term) - Protein Information****Name** FGD2

## Synonyms ZFYVE4

**Function** Activates CDC42, a member of the Ras-like family of Rho- and Rac proteins, by exchanging bound GDP for free GTP. Activates JNK1 via CDC42 but not RAC1. Binds to phosphatidylinositol 4,5-bisphosphate, phosphatidylinositol 3,4,5-trisphosphate, phosphatidylinositol 5- monophosphate, phosphatidylinositol 4-monophosphate and phosphatidylinositol 3-monophosphate (By similarity).

## Cellular Location

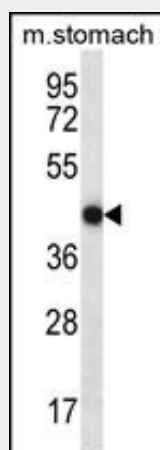
Cytoplasm, cytoskeleton. Cytoplasm. Nucleus. Early endosome Early endosome membrane. Cell projection, ruffle membrane. Note=Recruitment to the endosome and ruffle membrane requires the presence of phosphoinositides.

## FGD2 Antibody (C-term) - Protocols

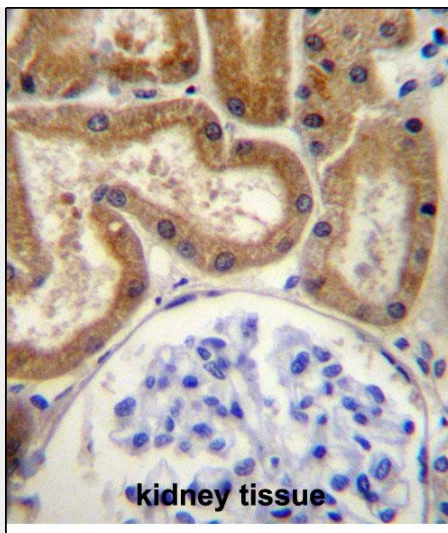
Provided below are standard protocols that you may find useful for product applications.

- [Western Blot](#)
- [Blocking Peptides](#)
- [Dot Blot](#)
- [Immunohistochemistry](#)
- [Immunofluorescence](#)
- [Immunoprecipitation](#)
- [Flow Cytometry](#)
- [Cell Culture](#)

## FGD2 Antibody (C-term) - Images



FGD2 Antibody (C-term) (Cat. #AP13191b) western blot analysis in mouse stomach tissue lysates (35ug/lane). This demonstrates the FGD2 antibody detected the FGD2 protein (arrow).



FGD2 Antibody (C-term) (Cat. #AP13191b) immunohistochemistry analysis in formalin fixed and paraffin embedded human kidney tissue followed by peroxidase conjugation of the secondary antibody and DAB staining. This data demonstrates the use of FGD2 Antibody (C-term) for immunohistochemistry. Clinical relevance has not been evaluated.

#### **FGD2 Antibody (C-term) - Background**

FGD2 activates CDC42, a member of the Ras-like family of Rho-and Rac proteins, by exchanging bound GDP for free GTP. Activates JNK1 via CDC42 but not RAC1. Binds to phosphatidylinositol 4,5-bisphosphate, phosphatidylinositol 3,4,5-trisphosphate, phosphatidylinositol 5-monophosphate, phosphatidylinositol 4-monophosphate and phosphatidylinositol 3-monophosphate (By similarity).

#### **FGD2 Antibody (C-term) - References**

Huber, C., et al. J. Biol. Chem. 283(49):34002-34012(2008)  
Delague, V., et al. Am. J. Hum. Genet. 81(1):1-16(2007)  
Mungall, A.J., et al. Nature 425(6960):805-811(2003)  
Rabizadeh, S., et al. Cytokine Growth Factor Rev. 14 (3-4), 225-239 (2003) :  
Salehi, A.H., et al. J. Biol. Chem. 277(50):48043-48050(2002)