

PSORS1C1 Antibody (N-term)
Affinity Purified Rabbit Polyclonal Antibody (Pab)
Catalog # AP13194a

Specification

PSORS1C1 Antibody (N-term) - Product Information

Application	FC, IHC-P, WB,E
Primary Accession	O9UIG5
Other Accession	NP_054787.2
Reactivity	Human
Host	Rabbit
Clonality	Polyclonal
Isotype	Rabbit IgG
Calculated MW	16580
Antigen Region	13-42

PSORS1C1 Antibody (N-term) - Additional Information

Gene ID 170679

Other Names

Psoriasis susceptibility 1 candidate gene 1 protein, Protein SEEK1, PSORS1C1, C6orf16, SEEK1

Target/Specificity

This PSORS1C1 antibody is generated from rabbits immunized with a KLH conjugated synthetic peptide between 13-42 amino acids from the N-terminal region of human PSORS1C1.

Dilution

FC~~1:10~50

IHC-P~~1:10~50

WB~~1:1000

E~~Use at an assay dependent concentration.

Format

Purified polyclonal antibody supplied in PBS with 0.09% (W/V) sodium azide. This antibody is purified through a protein A column, followed by peptide affinity purification.

Storage

Maintain refrigerated at 2-8°C for up to 2 weeks. For long term storage store at -20°C in small aliquots to prevent freeze-thaw cycles.

Precautions

PSORS1C1 Antibody (N-term) is for research use only and not for use in diagnostic or therapeutic procedures.

PSORS1C1 Antibody (N-term) - Protein Information

Name PSORS1C1

Synonyms C6orf16, SEEK1

Tissue Location

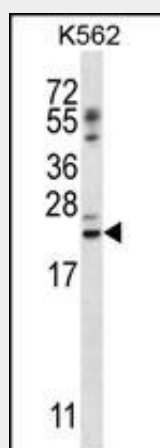
Expressed in skin. Also found in heart, placenta, liver, skeletal muscle and pancreas.

PSORS1C1 Antibody (N-term) - Protocols

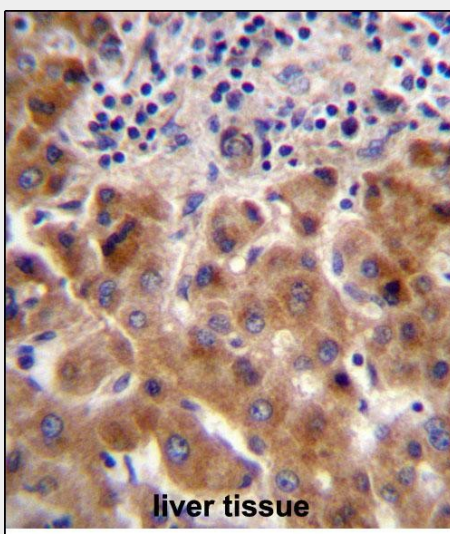
Provided below are standard protocols that you may find useful for product applications.

- [Western Blot](#)
- [Blocking Peptides](#)
- [Dot Blot](#)
- [Immunohistochemistry](#)
- [Immunofluorescence](#)
- [Immunoprecipitation](#)
- [Flow Cytometry](#)
- [Cell Culture](#)

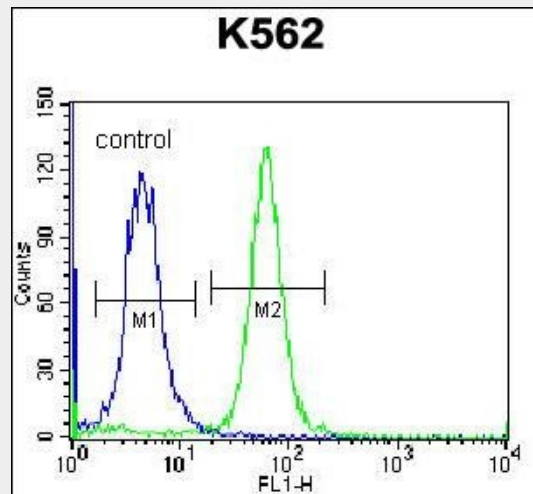
PSORS1C1 Antibody (N-term) - Images



PSORS1C1 Antibody (N-term) (Cat. #AP13194a) western blot analysis in K562 cell line lysates (35ug/lane). This demonstrates the PSORS1C1 antibody detected the PSORS1C1 protein (arrow).



PSORS1C1 Antibody (N-term) (Cat. #AP13194a) immunohistochemistry analysis in formalin fixed and paraffin embedded human liver tissue followed by peroxidase conjugation of the secondary antibody and DAB staining. This data demonstrates the use of PSORS1C1 Antibody (N-term) for immunohistochemistry. Clinical relevance has not been evaluated.



PSORS1C1 Antibody (N-term) (Cat. #AP13194a) flow cytometric analysis of K562 cells (right histogram) compared to a negative control cell (left histogram). FITC-conjugated donkey-anti-rabbit secondary antibodies were used for the analysis.

PSORS1C1 Antibody (N-term) - Background

The specific function of this protein remains unknown.