

LHFPL1 Antibody (N-term)
Affinity Purified Rabbit Polyclonal Antibody (Pab)
Catalog # AP13197a**Specification**

LHFPL1 Antibody (N-term) - Product Information

Application	WB,E
Primary Accession	Q86WI0
Other Accession	NP_835469.1
Reactivity	Human
Host	Rabbit
Clonality	Polyclonal
Isotype	Rabbit IgG
Calculated MW	23777
Antigen Region	20-49

LHFPL1 Antibody (N-term) - Additional Information**Gene ID** 340596**Other Names**

Lipoma HMGIC fusion partner-like 1 protein, LHFPL1

Target/Specificity

This LHFPL1 antibody is generated from rabbits immunized with a KLH conjugated synthetic peptide between 20-49 amino acids from the N-terminal region of human LHFPL1.

Dilution

WB~~1:1000

E~~Use at an assay dependent concentration.

Format

Purified polyclonal antibody supplied in PBS with 0.09% (W/V) sodium azide. This antibody is purified through a protein A column, followed by peptide affinity purification.

Storage

Maintain refrigerated at 2-8°C for up to 2 weeks. For long term storage store at -20°C in small aliquots to prevent freeze-thaw cycles.

Precautions

LHFPL1 Antibody (N-term) is for research use only and not for use in diagnostic or therapeutic procedures.

LHFPL1 Antibody (N-term) - Protein Information**Name** LHFPL1 ([HGNC:6587](#))**Cellular Location**

Membrane; Multi-pass membrane protein

Tissue Location

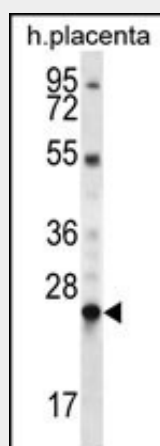
Widely expressed. Expressed at high levels in lung, thymus, skeletal muscle, colon and ovary

LHFPL1 Antibody (N-term) - Protocols

Provided below are standard protocols that you may find useful for product applications.

- [Western Blot](#)
- [Blocking Peptides](#)
- [Dot Blot](#)
- [Immunohistochemistry](#)
- [Immunofluorescence](#)
- [Immunoprecipitation](#)
- [Flow Cytometry](#)
- [Cell Culture](#)

LHFPL1 Antibody (N-term) - Images



LHFPL1 Antibody (N-term) (Cat. #AP13197a) western blot analysis in human placenta tissue lysates (35ug/lane). This demonstrates the LHFPL1 antibody detected the LHFPL1 protein (arrow).

LHFPL1 Antibody (N-term) - Background

This gene is a member of the lipoma HMGIC fusion partner (LHFP) gene family, which is a subset of the superfamily of tetraspan transmembrane protein encoding genes. Mutations in one LHFP-like gene result in deafness in humans and mice, and a second LHFP-like gene is fused to a high-mobility group gene in a translocation-associated lipoma. Alternatively spliced transcript variants have been found, but their biological validity has not been determined.

LHFPL1 Antibody (N-term) - References

Longo-Guess, C.M., et al. Proc. Natl. Acad. Sci. U.S.A. 102(22):7894-7899(2005)
Huang, C., et al. DNA Seq. 15(4):299-302(2004)
Petit, M.M., et al. Genomics 57(3):438-441(1999)