

THAP8 Antibody (Center)
Affinity Purified Rabbit Polyclonal Antibody (Pab)
Catalog # AP13209c**Specification**

THAP8 Antibody (Center) - Product Information

Application	WB,E
Primary Accession	Q8NA92
Other Accession	NP_689871.1
Reactivity	Human
Host	Rabbit
Clonality	Polyclonal
Isotype	Rabbit IgG
Calculated MW	30082
Antigen Region	72-100

THAP8 Antibody (Center) - Additional Information**Gene ID** 199745**Other Names**

THAP domain-containing protein 8, THAP8

Target/Specificity

This THAP8 antibody is generated from rabbits immunized with a KLH conjugated synthetic peptide between 72-100 amino acids from the Central region of human THAP8.

Dilution

WB~~1:1000

E~~Use at an assay dependent concentration.

Format

Purified polyclonal antibody supplied in PBS with 0.09% (W/V) sodium azide. This antibody is purified through a protein A column, followed by peptide affinity purification.

Storage

Maintain refrigerated at 2-8°C for up to 2 weeks. For long term storage store at -20°C in small aliquots to prevent freeze-thaw cycles.

Precautions

THAP8 Antibody (Center) is for research use only and not for use in diagnostic or therapeutic procedures.

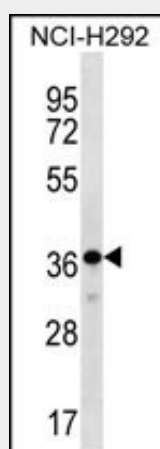
THAP8 Antibody (Center) - Protein Information**Name** THAP8

THAP8 Antibody (Center) - Protocols

Provided below are standard protocols that you may find useful for product applications.

- [Western Blot](#)
- [Blocking Peptides](#)
- [Dot Blot](#)
- [Immunohistochemistry](#)
- [Immunofluorescence](#)
- [Immunoprecipitation](#)
- [Flow Cytometry](#)
- [Cell Culture](#)

THAP8 Antibody (Center) - Images



THAP8 Antibody (Center) (Cat. #AP13209c) western blot analysis in NCI-H292 cell line lysates (35ug/lane). This demonstrates the THAP8 antibody detected the THAP8 protein (arrow).

THAP8 Antibody (Center) - Background

The specific function of this protein remains unknown.

THAP8 Antibody (Center) - References

Lamesch, P., et al. Genomics 89(3):307-315(2007)

Roussigne, M., et al. Trends Biochem. Sci. 28(2):66-69(2003)