

YE016 Antibody (Center)
Affinity Purified Rabbit Polyclonal Antibody (Pab)
Catalog # AP13214c**Specification**

YE016 Antibody (Center) - Product Information

Application	FC, WB,E
Primary Accession	A6NLC8
Reactivity	Human
Host	Rabbit
Clonality	Polyclonal
Isotype	Rabbit IgG
Calculated MW	21962
Antigen Region	59-87

YE016 Antibody (Center) - Additional Information**Gene ID** 391742**Other Names**

Putative TAF11-like protein ENSP00000332601, YE016

Target/Specificity

This YE016 antibody is generated from rabbits immunized with a KLH conjugated synthetic peptide between 59-87 amino acids from the Central region of human YE016.

Dilution

FC~~1:10~50

WB~~1:1000

E~~Use at an assay dependent concentration.

Format

Purified polyclonal antibody supplied in PBS with 0.09% (W/V) sodium azide. This antibody is purified through a protein A column, followed by peptide affinity purification.

Storage

Maintain refrigerated at 2-8°C for up to 2 weeks. For long term storage store at -20°C in small aliquots to prevent freeze-thaw cycles.

Precautions

YE016 Antibody (Center) is for research use only and not for use in diagnostic or therapeutic procedures.

YE016 Antibody (Center) - Protein Information**Name** TAF11L2 ([HGNC:53845](#))**Tissue Location**

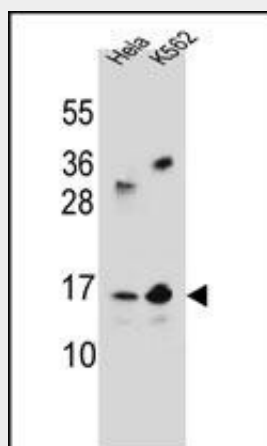
Expressed in fetal brain and testis.

YE016 Antibody (Center) - Protocols

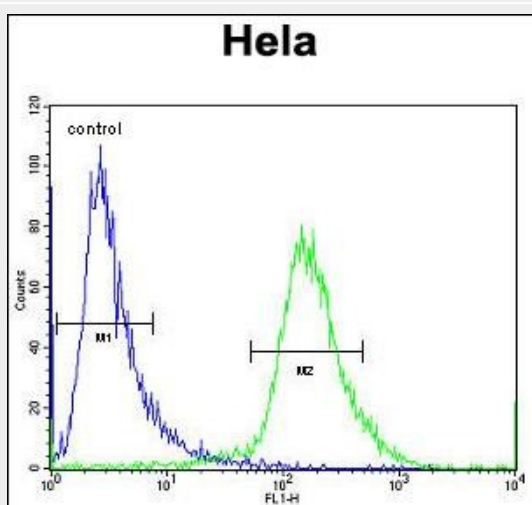
Provided below are standard protocols that you may find useful for product applications.

- [Western Blot](#)
- [Blocking Peptides](#)
- [Dot Blot](#)
- [Immunohistochemistry](#)
- [Immunofluorescence](#)
- [Immunoprecipitation](#)
- [Flow Cytometry](#)
- [Cell Culture](#)

YE016 Antibody (Center) - Images



YE016 Antibody (Center) (Cat. #AP13214c) western blot analysis in HeLa, K562 cell line lysates (35ug/lane). This demonstrates the YE016 antibody detected the YE016 protein (arrow).



YE016 Antibody (Center) (Cat. #AP13214c) flow cytometric analysis of HeLa cells (right histogram) compared to a negative control cell (left histogram). FITC-conjugated goat-anti-rabbit secondary antibodies were used for the analysis.

YE016 Antibody (Center) - Background

The specific function of this protein remains unknown.