

RAB3D Antibody (C-term)
Affinity Purified Rabbit Polyclonal Antibody (Pab)
Catalog # AP13216b**Specification**

RAB3D Antibody (C-term) - Product Information

Application	WB, IHC-P, FC,E
Primary Accession	O95716
Other Accession	NP_004274.1
Reactivity	Human
Host	Rabbit
Clonality	Polyclonal
Isotype	Rabbit IgG
Calculated MW	24267
Antigen Region	185-212

RAB3D Antibody (C-term) - Additional Information**Gene ID** 9545**Other Names**

Ras-related protein Rab-3D, RAB3D, GOV, RAB16

Target/Specificity

This RAB3D antibody is generated from rabbits immunized with a KLH conjugated synthetic peptide between 185-212 amino acids from the C-terminal region of human RAB3D.

Dilution

WB~~1:1000
IHC-P~~1:10~50
FC~~1:10~50

Format

Purified polyclonal antibody supplied in PBS with 0.09% (W/V) sodium azide. This antibody is purified through a protein A column, followed by peptide affinity purification.

Storage

Maintain refrigerated at 2-8°C for up to 2 weeks. For long term storage store at -20°C in small aliquots to prevent freeze-thaw cycles.

Precautions

RAB3D Antibody (C-term) is for research use only and not for use in diagnostic or therapeutic procedures.

RAB3D Antibody (C-term) - Protein Information**Name** RAB3D

Synonyms GOV, RAB16

Function Protein transport. Probably involved in regulated exocytosis (By similarity).

Cellular Location

Cell membrane; Lipid-anchor; Cytoplasmic side

Tissue Location

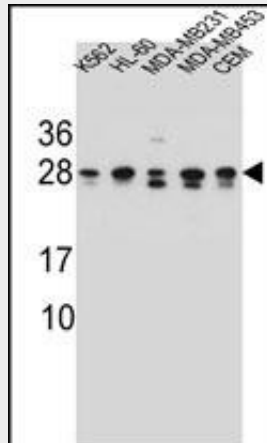
Highly expressed in granulocytes of peripheral blood. Constitutively expressed at low levels in all hematopoietic cell lines investigated

RAB3D Antibody (C-term) - Protocols

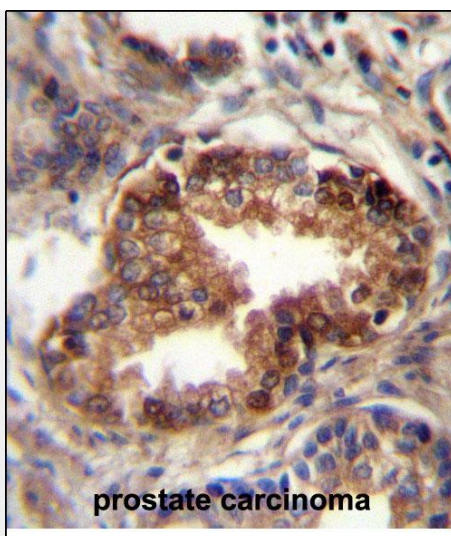
Provided below are standard protocols that you may find useful for product applications.

- [Western Blot](#)
- [Blocking Peptides](#)
- [Dot Blot](#)
- [Immunohistochemistry](#)
- [Immunofluorescence](#)
- [Immunoprecipitation](#)
- [Flow Cytometry](#)
- [Cell Culture](#)

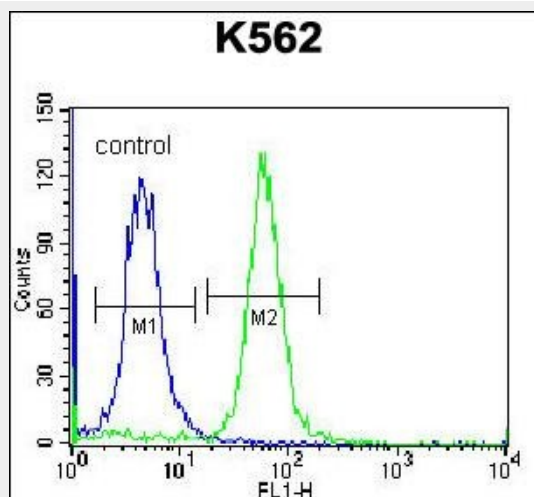
RAB3D Antibody (C-term) - Images



RAB3D Antibody (C-term) (Cat. #AP13216b) western blot analysis in K562,HL-60,MDA-MB231,MDA-MB453,CEM cell line lysates (35ug/lane).This demonstrates the RAB3D antibody detected the RAB3D protein (arrow).



RAB3D Antibody (C-term) (Cat. #AP13216b) immunohistochemistry analysis in formalin fixed and paraffin embedded human prostate carcinoma followed by peroxidase conjugation of the secondary antibody and DAB staining. This data demonstrates the use of RAB3D Antibody (C-term) for immunohistochemistry. Clinical relevance has not been evaluated.



RAB3D Antibody (C-term) (Cat. #AP13216b) flow cytometric analysis of K562 cells (right histogram) compared to a negative control cell (left histogram). FITC-conjugated donkey-anti-rabbit secondary antibodies were used for the analysis.

RAB3D Antibody (C-term) - Background

RAB3D is a protein transport. Probably involved in regulated exocytosis (By similarity).

RAB3D Antibody (C-term) - References

- Tian, X., et al. Mol. Cell. Biol. 30(5):1269-1284(2010)
- Knop, M., et al. EMBO J. 23(15):2982-2992(2004)
- Matsumoto, M., et al. Proc. Natl. Acad. Sci. U.S.A. 101(22):8313-8318(2004)
- Nguyen, D., et al. J. Cell. Physiol. 197(3):400-408(2003)
- Fukuda, M. J. Biol. Chem. 278(17):15373-15380(2003)