

PDE6A Antibody (Center)
Affinity Purified Rabbit Polyclonal Antibody (Pab)
Catalog # AP13220C

Specification

PDE6A Antibody (Center) - Product Information

Application	WB,E
Primary Accession	P16499
Other Accession	P27664 , P11541 , NP_000431.2
Reactivity	Human
Predicted	Bovine, Mouse
Host	Rabbit
Clonality	Polyclonal
Isotype	Rabbit IgG
Calculated MW	99547
Antigen Region	308-336

PDE6A Antibody (Center) - Additional Information

Gene ID 5145

Other Names

Rod cGMP-specific 3', 5'-cyclic phosphodiesterase subunit alpha, GMP-PDE alpha, PDE V-B1, PDE6A, PDEA

Target/Specificity

This PDE6A antibody is generated from rabbits immunized with a KLH conjugated synthetic peptide between 308-336 amino acids from the Central region of human PDE6A.

Dilution

WB~~1:1000

E~~Use at an assay dependent concentration.

Format

Purified polyclonal antibody supplied in PBS with 0.09% (W/V) sodium azide. This antibody is purified through a protein A column, followed by peptide affinity purification.

Storage

Maintain refrigerated at 2-8°C for up to 2 weeks. For long term storage store at -20°C in small aliquots to prevent freeze-thaw cycles.

Precautions

PDE6A Antibody (Center) is for research use only and not for use in diagnostic or therapeutic procedures.

PDE6A Antibody (Center) - Protein Information

Name PDE6A ([HGNC:8785](#))

Synonyms PDEA

Function Rod-specific cGMP phosphodiesterase that catalyzes the hydrolysis of 3',5'-cyclic GMP (PubMed:[20940301](#)). This protein participates in processes of transmission and amplification of the visual signal.

Cellular Location

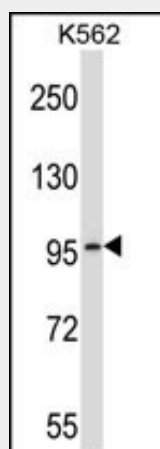
Cell membrane; Lipid-anchor; Cytoplasmic side. Cell projection, cilium, photoreceptor outer segment

PDE6A Antibody (Center) - Protocols

Provided below are standard protocols that you may find useful for product applications.

- [Western Blot](#)
- [Blocking Peptides](#)
- [Dot Blot](#)
- [Immunohistochemistry](#)
- [Immunofluorescence](#)
- [Immunoprecipitation](#)
- [Flow Cytometry](#)
- [Cell Culture](#)

PDE6A Antibody (Center) - Images



PDE6A Antibody (Center) (Cat. #AP13220c) western blot analysis in K562 cell line lysates (35ug/lane). This demonstrates the PDE6A antibody detected the PDE6A protein (arrow).

PDE6A Antibody (Center) - Background

This gene encodes the cyclic-GMP (cGMP)-specific phosphodiesterase 6A alpha subunit, expressed in cells of the retinal rod outer segment. The phosphodiesterase 6 holoenzyme is a heterotrimer composed of an alpha, beta, and two gamma subunits. cGMP is an important regulator of rod cell membrane current, and its dynamic concentration is established by phosphodiesterase 6A cGMP hydrolysis and guanylate cyclase cGMP synthesis. The protein is a subunit of a key phototransduction enzyme and participates in processes of transmission and amplification of the visual signal. Mutations in this gene have been identified as one cause of

autosomal recessive retinitis pigmentosa.

PDE6A Antibody (Center) - References

Clark, G.R., et al. Ophthalmology 117(11):2169-2177(2010)
Bailey, S.D., et al. Diabetes Care 33(10):2250-2253(2010)
Perlis, R.H., et al. Biol. Psychiatry 67(11):1110-1113(2010)
Bazhin, A.V., et al. Cell. Mol. Life Sci. 67(5):817-828(2010)
Talmud, P.J., et al. Am. J. Hum. Genet. 85(5):628-642(2009)