

PCDHB5 Antibody (Center)
Affinity Purified Rabbit Polyclonal Antibody (Pab)
Catalog # AP13230c

Specification

PCDHB5 Antibody (Center) - Product Information

Application	IHC-P, WB,E
Primary Accession	O9Y5E4
Other Accession	NP_056484.1
Reactivity	Human
Host	Rabbit
Clonality	Polyclonal
Isotype	Rabbit IgG
Antigen Region	278-307

PCDHB5 Antibody (Center) - Additional Information

Gene ID 26167

Other Names

Protocadherin beta-5, PCDH-beta-5, PCDHB5

Target/Specificity

This PCDHB5 antibody is generated from rabbits immunized with a KLH conjugated synthetic peptide between 278-307 amino acids from the Central region of human PCDHB5.

Dilution

IHC-P~~1:10~50

WB~~1:1000

E~~Use at an assay dependent concentration.

Format

Purified polyclonal antibody supplied in PBS with 0.09% (W/V) sodium azide. This antibody is purified through a protein A column, followed by peptide affinity purification.

Storage

Maintain refrigerated at 2-8°C for up to 2 weeks. For long term storage store at -20°C in small aliquots to prevent freeze-thaw cycles.

Precautions

PCDHB5 Antibody (Center) is for research use only and not for use in diagnostic or therapeutic procedures.

PCDHB5 Antibody (Center) - Protein Information

Name PCDHB5

Function Potential calcium-dependent cell-adhesion protein. May be involved in the

establishment and maintenance of specific neuronal connections in the brain.

Cellular Location

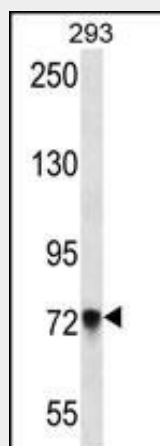
Cell membrane; Single-pass type I membrane protein

PCDHB5 Antibody (Center) - Protocols

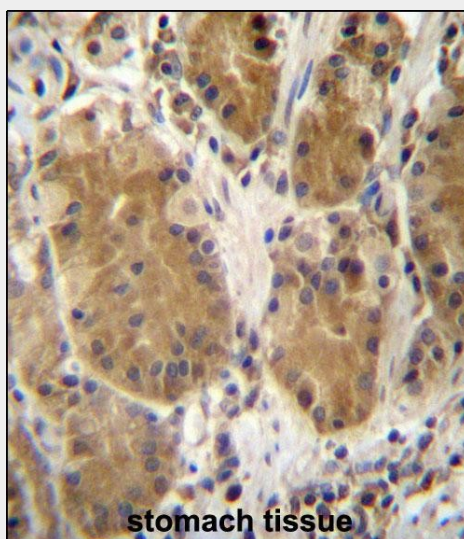
Provided below are standard protocols that you may find useful for product applications.

- [Western Blot](#)
- [Blocking Peptides](#)
- [Dot Blot](#)
- [Immunohistochemistry](#)
- [Immunofluorescence](#)
- [Immunoprecipitation](#)
- [Flow Cytometry](#)
- [Cell Culture](#)

PCDHB5 Antibody (Center) - Images



PCDHB5 Antibody (Center) (Cat. #AP13230c) western blot analysis in 293 cell line lysates (35ug/lane). This demonstrates the PCDHB5 antibody detected the PCDHB5 protein (arrow).



PCDHB5 Antibody (Center) (Cat. #AP13230c) immunohistochemistry analysis in formalin fixed and paraffin embedded human stomach tissue followed by peroxidase conjugation of the secondary antibody and DAB staining. This data demonstrates the use of PCDHB5 Antibody (Center) for immunohistochemistry. Clinical relevance has not been evaluated.

PCDHB5 Antibody (Center) - Background

This gene is a member of the protocadherin beta gene cluster, one of three related gene clusters tandemly linked on chromosome five. The gene clusters demonstrate an unusual genomic organization similar to that of B-cell and T-cell receptor gene clusters. The beta cluster contains 16 genes and 3 pseudogenes, each encoding 6 extracellular cadherin domains and a cytoplasmic tail that deviates from others in the cadherin superfamily. The extracellular domains interact in a homophilic manner to specify differential cell-cell connections. Unlike the alpha and gamma clusters, the transcripts from these genes are made up of only one large exon, not sharing common 3' exons as expected. These neural cadherin-like cell adhesion proteins are integral plasma membrane proteins. Their specific functions are unknown but they most likely play a critical role in the establishment and function of specific cell-cell neural connections.

PCDHB5 Antibody (Center) - References

Ewing, R.M., et al. Mol. Syst. Biol. 3, 89 (2007) :
Frank, M., et al. Curr. Opin. Cell Biol. 14(5):557-562(2002)
Vanhalst, K., et al. FEBS Lett. 495 (1-2), 120-125 (2001) :
Wu, Q., et al. Genome Res. 11(3):389-404(2001)
Nollet, F., et al. J. Mol. Biol. 299(3):551-572(2000)