

GIMAP8 Antibody (N-term)
Affinity Purified Rabbit Polyclonal Antibody (Pab)
Catalog # AP13234A**Specification**

GIMAP8 Antibody (N-term) - Product Information

Application	WB,E
Primary Accession	Q8ND71
Other Accession	NP_783161.1
Reactivity	Human
Host	Rabbit
Clonality	Polyclonal
Isotype	Rabbit IgG
Calculated MW	74890
Antigen Region	205-233

GIMAP8 Antibody (N-term) - Additional Information**Gene ID** 155038**Other Names**

GTPase IMAP family member 8, Immune-associated nucleotide-binding protein 9, IAN-9, Protein Iant, GIMAP8, IAN9, IANT

Target/Specificity

This GIMAP8 antibody is generated from rabbits immunized with a KLH conjugated synthetic peptide between 205-233 amino acids from the N-terminal region of human GIMAP8.

Dilution

WB~~1:1000

Format

Purified polyclonal antibody supplied in PBS with 0.09% (W/V) sodium azide. This antibody is purified through a protein A column, followed by peptide affinity purification.

Storage

Maintain refrigerated at 2-8°C for up to 2 weeks. For long term storage store at -20°C in small aliquots to prevent freeze-thaw cycles.

Precautions

GIMAP8 Antibody (N-term) is for research use only and not for use in diagnostic or therapeutic procedures.

GIMAP8 Antibody (N-term) - Protein Information**Name** GIMAP8**Synonyms** IAN9, IANT

Function Exerts an anti-apoptotic effect in the immune system and is involved in responses to infections.

Cellular Location

Endoplasmic reticulum {ECO:0000250|UniProtKB:Q75N62}. Golgi apparatus {ECO:0000250|UniProtKB:Q75N62}. Mitochondrion {ECO:0000250|UniProtKB:Q75N62}. Cytoplasm, cytosol

Tissue Location

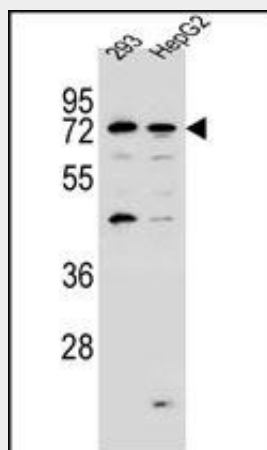
Expressed in the spleen, intestine, liver, and colon, as well as in lung, placenta, kidney, muscle, and heart Extremely low expression, if any, in brain, in thymus, bone marrow, and blood leukocytes (PubMed:15474311). Detected in T-cells (PubMed:23454188).

GIMAP8 Antibody (N-term) - Protocols

Provided below are standard protocols that you may find useful for product applications.

- [Western Blot](#)
- [Blocking Peptides](#)
- [Dot Blot](#)
- [Immunohistochemistry](#)
- [Immunofluorescence](#)
- [Immunoprecipitation](#)
- [Flow Cytometry](#)
- [Cell Culture](#)

GIMAP8 Antibody (N-term) - Images



GIMAP8 Antibody (N-term) (Cat. #AP13234a) western blot analysis in 293,HepG2 cell line lysates (35ug/lane).This demonstrates the GIMAP8 antibody detected the GIMAP8 protein (arrow).

GIMAP8 Antibody (N-term) - Background

This gene encodes a protein belonging to the GTP-binding superfamily and to the immuno-associated nucleotide (IAN) subfamily of nucleotide-binding proteins. In humans, the IAN subfamily genes are located in a cluster at 7q36.1.

GIMAP8 Antibody (N-term) - References

Rose, J.E., et al. Mol. Med. 16 (7-8), 247-253 (2010) :
Davila, S., et al. Genes Immun. 11(3):232-238(2010)
Dion, C., et al. Int. Immunol. 17(9):1257-1268(2005)
Krucken, J., et al. Gene 341, 291-304 (2004) :
Cambot, M., et al. Blood 99(9):3293-3301(2002)