

ASMTL Antibody (Center)
Affinity Purified Rabbit Polyclonal Antibody (Pab)
Catalog # AP13236c**Specification**

ASMTL Antibody (Center) - Product Information

Application	WB, IHC-P,E
Primary Accession	O95671
Other Accession	NP_001166945.1 , NP_004183.2
Reactivity	Human
Host	Rabbit
Clonality	Polyclonal
Isotype	Rabbit IgG
Calculated MW	68857
Antigen Region	231-259

ASMTL Antibody (Center) - Additional Information**Gene ID** 8623**Other Names**

N-acetylserotonin O-methyltransferase-like protein, ASMTL, 211-, ASMTL

Target/Specificity

This ASMTL antibody is generated from rabbits immunized with a KLH conjugated synthetic peptide between 231-259 amino acids from the Central region of human ASMTL.

Dilution

WB~~1:1000

IHC-P~~1:10~50

Format

Purified polyclonal antibody supplied in PBS with 0.09% (W/V) sodium azide. This antibody is purified through a protein A column, followed by peptide affinity purification.

Storage

Maintain refrigerated at 2-8°C for up to 2 weeks. For long term storage store at -20°C in small aliquots to prevent freeze-thaw cycles.

Precautions

ASMTL Antibody (Center) is for research use only and not for use in diagnostic or therapeutic procedures.

ASMTL Antibody (Center) - Protein Information**Name** ASMTL**Function** Nucleoside triphosphate pyrophosphatase that hydrolyzes dTTP and UTP. Can also

hydrolyze CTP and the modified nucleotides pseudo- UTP, 5-methyl-UTP (m(5)UTP) and 5-methyl-CTP (m(5)CTP). Has weak activity with dCTP, 8-oxo-GTP and N(4)-methyl-dCTP (PubMed:[24210219](#)). May have a dual role in cell division arrest and in preventing the incorporation of modified nucleotides into cellular nucleic acids (PubMed:[24210219](#)). In addition, the presence of the putative catalytic domain of S-adenosyl-L-methionine binding in the C-terminal region argues for a methyltransferase activity (Probable).

Tissue Location

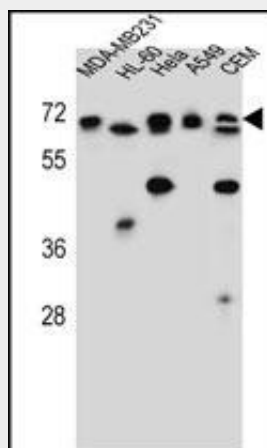
Widely expressed. In adult, highly expressed in pancreas, placenta, fibroblast, thymus, prostate, testis, ovary and colon. Expressed at lower levels in spleen, small intestine and leukocytes. In fetus, expressed at high levels in the lung and kidney and at lower level in brain and liver

ASMTL Antibody (Center) - Protocols

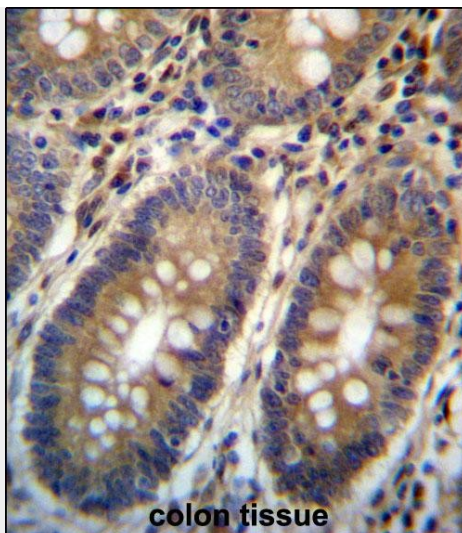
Provided below are standard protocols that you may find useful for product applications.

- [Western Blot](#)
- [Blocking Peptides](#)
- [Dot Blot](#)
- [Immunohistochemistry](#)
- [Immunofluorescence](#)
- [Immunoprecipitation](#)
- [Flow Cytometry](#)
- [Cell Culture](#)

ASMTL Antibody (Center) - Images



ASMTL Antibody (Center) (Cat. #AP13236c) western blot analysis in MDA-MB231,HL-60,HeLa,A549,CEM cell line lysates (35ug/lane).This demonstrates the ASMTL antibody detected the ASMTL protein (arrow).



ASMTL Antibody (Center) (Cat. #AP13236c) immunohistochemistry analysis in formalin fixed and paraffin embedded human colon tissue followed by peroxidase conjugation of the secondary antibody and DAB staining. This data demonstrates the use of ASMTL Antibody (Center) for immunohistochemistry. Clinical relevance has not been evaluated.

ASMTL Antibody (Center) - Background

The protein encoded by this gene has an N-terminus that is similar to the multicopy associated filamentation (maf) protein of *Bacillus subtilis* and to orfE of *Escherichia coli*, while the C-terminus is similar to N-acetylserotonin O-methyltransferase. This gene is located in the pseudoautosomal region 1 (PAR1) of X and Y chromosomes. Three transcript variants encoding different isoforms have been found for this gene.

ASMTL Antibody (Center) - References

Olsen, J.V., et al. *Cell* 127(3):635-648(2006)
Olsen, J.V., et al. *Cell* 127(3):635-648(2006)
Ried, K., et al. *Hum. Mol. Genet.* 7(11):1771-1778(1998)