

DACH2 Antibody (N-term)
Affinity Purified Rabbit Polyclonal Antibody (Pab)
Catalog # AP13241a**Specification**

DACH2 Antibody (N-term) - Product Information

Application	WB,E
Primary Accession	O96NX9
Other Accession	O925Q8 , NP_444511.1 , NP_001132987.1
Reactivity	Human
Predicted	Mouse
Host	Rabbit
Clonality	Polyclonal
Isotype	Rabbit IgG
Calculated MW	65323
Antigen Region	145-173

DACH2 Antibody (N-term) - Additional Information**Gene ID** 117154**Other Names**

Dachshund homolog 2, Dach2, DACH2

Target/Specificity

This DACH2 antibody is generated from rabbits immunized with a KLH conjugated synthetic peptide between 145-173 amino acids from the N-terminal region of human DACH2.

Dilution

WB~~1:1000

E~~Use at an assay dependent concentration.

Format

Purified polyclonal antibody supplied in PBS with 0.09% (W/V) sodium azide. This antibody is purified through a protein A column, followed by peptide affinity purification.

Storage

Maintain refrigerated at 2-8°C for up to 2 weeks. For long term storage store at -20°C in small aliquots to prevent freeze-thaw cycles.

Precautions

DACH2 Antibody (N-term) is for research use only and not for use in diagnostic or therapeutic procedures.

DACH2 Antibody (N-term) - Protein Information**Name** DACH2

Function Transcription factor that is involved in regulation of organogenesis. Seems to be a regulator for SIX1 and SIX6. Seems to act as a corepressor of SIX6 in regulating proliferation by directly repressing cyclin-dependent kinase inhibitors, including the p27Kip1 promoter. Is recruited with SIX6 to the p27Kip1 promoter in embryonal retina. SIX6 corepression also seems to involve NCOR1, TBL1, HDAC1 and HDAC3. May be involved together with PAX3, SIX1, and EYA2 in regulation of myogenesis. In the developing somite, expression of DACH2 and PAX3 is regulated by the overlying ectoderm, and DACH2 and PAX3 positively regulate each other's expression (By similarity). Probably binds to DNA via its DACHbox-N domain.

Cellular Location

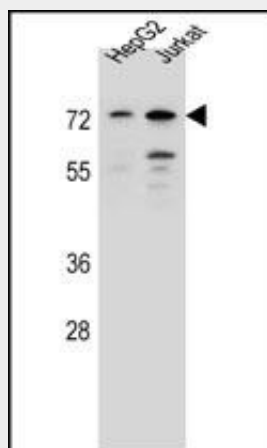
Nucleus.

DACH2 Antibody (N-term) - Protocols

Provided below are standard protocols that you may find useful for product applications.

- [Western Blot](#)
- [Blocking Peptides](#)
- [Dot Blot](#)
- [Immunohistochemistry](#)
- [Immunofluorescence](#)
- [Immunoprecipitation](#)
- [Flow Cytometry](#)
- [Cell Culture](#)

DACH2 Antibody (N-term) - Images



DACH2 Antibody (N-term) (Cat. #AP13241a) western blot analysis in HepG2, Jurkat cell line lysates (35ug/lane). This demonstrates the DACH2 antibody detected the DACH2 protein (arrow).

DACH2 Antibody (N-term) - Background

This gene is one of two genes which encode a protein similar to the Drosophila protein dachshund, a transcription factor involved in cell fate determination in the eye, limb and genital disc of the fly. The encoded protein contains two characteristic dachshund domains: an N-terminal domain responsible for DNA binding and a C-terminal domain responsible for protein-protein interactions. This gene is located on the X chromosome and is subject to inactivation by DNA methylation. The encoded protein may

be involved in regulation of organogenesis and myogenesis, and may play a role in premature ovarian failure. Multiple transcript variants encoding different isoforms have been found for this gene.

DACH2 Antibody (N-term) - References

Bailey, S.D., et al. Diabetes Care (2010) In press :
Talmud, P.J., et al. Am. J. Hum. Genet. 85(5):628-642(2009)
Styrkarsdottir, U., et al. Nat. Genet. 41(1):15-17(2009)
Poulin, F., et al. Genomics 85(6):774-781(2005)
Bione, S., et al. Hum. Reprod. 19(12):2759-2766(2004)