

**TUBB8 Antibody (N-term)**  
**Affinity Purified Rabbit Polyclonal Antibody (Pab)**  
**Catalog # AP13248a****Specification**

---

**TUBB8 Antibody (N-term) - Product Information**

Application	WB,E
Primary Accession	<a href="#">Q3ZCM7</a>
Other Accession	<a href="#">NP_817124.1</a>
Reactivity	Human
Host	Rabbit
Clonality	Polyclonal
Isotype	Rabbit IgG
Calculated MW	49776
Antigen Region	34-62

**TUBB8 Antibody (N-term) - Additional Information****Gene ID** 347688**Other Names**

Tubulin beta-8 chain, TUBB8

**Target/Specificity**

This TUBB8 antibody is generated from rabbits immunized with a KLH conjugated synthetic peptide between 34-62 amino acids from the N-terminal region of human TUBB8.

**Dilution**

WB~~1:1000

**Format**

Purified polyclonal antibody supplied in PBS with 0.09% (W/V) sodium azide. This antibody is purified through a protein A column, followed by peptide affinity purification.

**Storage**

Maintain refrigerated at 2-8°C for up to 2 weeks. For long term storage store at -20°C in small aliquots to prevent freeze-thaw cycles.

**Precautions**

TUBB8 Antibody (N-term) is for research use only and not for use in diagnostic or therapeutic procedures.

**TUBB8 Antibody (N-term) - Protein Information****Name** TUBB8 ([HGNC:20773](#))

**Function** Tubulin is the major constituent of microtubules, a cylinder consisting of laterally associated linear protofilaments composed of alpha- and beta-tubulin heterodimers. Microtubules

grow by the addition of GTP-tubulin dimers to the microtubule end, where a stabilizing cap forms. Below the cap, tubulin dimers are in GDP-bound state, owing to GTPase activity of alpha-tubulin. TUBB8 has a key role in meiotic spindle assembly and oocyte maturation (PubMed:[26789871](#), PubMed:[34509376](#)).

#### Cellular Location

Cytoplasm, cytoskeleton. Cytoplasm, cytoskeleton, spindle

#### Tissue Location

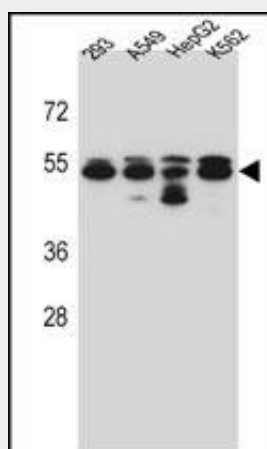
Expressed at a high level in oocytes, at different stages of development.

### TUBB8 Antibody (N-term) - Protocols

Provided below are standard protocols that you may find useful for product applications.

- [Western Blot](#)
- [Blocking Peptides](#)
- [Dot Blot](#)
- [Immunohistochemistry](#)
- [Immunofluorescence](#)
- [Immunoprecipitation](#)
- [Flow Cytometry](#)
- [Cell Culture](#)

### TUBB8 Antibody (N-term) - Images



TUBB8 Antibody (N-term) (Cat. #AP13248a) western blot analysis in 293, A549, HepG2, K562 cell line lysates (35ug/lane). This demonstrates the TUBB8 antibody detected the TUBB8 protein (arrow).

### TUBB8 Antibody (N-term) - Background

Tubulin is the major constituent of microtubules. It binds two moles of GTP, one at an exchangeable site on the beta chain and one at a non-exchangeable site on the alpha-chain (By similarity).

### TUBB8 Antibody (N-term) - References

van Geel, M., et al. Am. J. Hum. Genet. 70(1):269-278(2002)  
van Geel, M., et al. Cytogenet. Cell Genet. 88 (3-4), 316-321 (2000) :