

**WDR45L Antibody (N-term)**  
**Affinity Purified Rabbit Polyclonal Antibody (Pab)**  
**Catalog # AP13252a****Specification**

---

**WDR45L Antibody (N-term) - Product Information**

Application	WB,E
Primary Accession	<a href="#">Q5MNZ6</a>
Other Accession	<a href="#">Q68F45</a> , <a href="#">Q9CR39</a> , <a href="#">NP_062559.2</a>
Reactivity	Human
Predicted	Mouse, Xenopus
Host	Rabbit
Clonality	Polyclonal
Isotype	Rabbit IgG
Calculated MW	38122
Antigen Region	24-52

**WDR45L Antibody (N-term) - Additional Information****Gene ID** 56270**Other Names**

WD repeat domain phosphoinositide-interacting protein 3, WIPI-3, WD repeat-containing protein 45-like, WDR45-like protein, WD repeat-containing protein 45B, WIPI49-like protein, WDR45B, WDR45L, WIPI3

**Target/Specificity**

This WDR45L antibody is generated from rabbits immunized with a KLH conjugated synthetic peptide between 24-52 amino acids from the N-terminal region of human WDR45L.

**Dilution**

WB~~1:1000

E~~Use at an assay dependent concentration.

**Format**

Purified polyclonal antibody supplied in PBS with 0.09% (W/V) sodium azide. This antibody is purified through a protein A column, followed by peptide affinity purification.

**Storage**

Maintain refrigerated at 2-8°C for up to 2 weeks. For long term storage store at -20°C in small aliquots to prevent freeze-thaw cycles.

**Precautions**

WDR45L Antibody (N-term) is for research use only and not for use in diagnostic or therapeutic procedures.

**WDR45L Antibody (N-term) - Protein Information**

**Name** WDR45B

**Synonyms** WDR45L, WIPI3

**Function** Component of the autophagy machinery that controls the major intracellular degradation process by which cytoplasmic materials are packaged into autophagosomes and delivered to lysosomes for degradation (PubMed:[28561066](#)). Binds phosphatidylinositol 3-phosphate (PtdIns3P), and other phosphoinositides including PtdIns(3,5)P<sub>2</sub>, forming on membranes of the endoplasmic reticulum upon activation of the upstream ULK1 and PI3 kinases and is recruited at phagophore assembly sites where it regulates the elongation of nascent phagophores downstream of WIPI2 (PubMed:[28561066](#), PubMed:[30797857](#)). In the cellular response to starvation, may also function together with the TSC1-TSC2 complex and RB1CC1 in the inhibition of the mTORC1 signaling pathway (PubMed:[28503735](#)).

**Cellular Location**

Preautophagosomal structure. Lysosome

**Tissue Location**

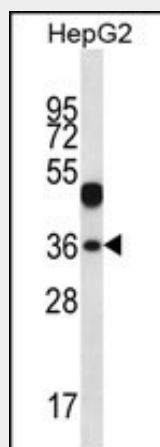
Ubiquitously expressed. Highly expressed in heart, skeletal muscle and pancreas. Up-regulated in a variety of tumor tissues including ovarian and uterine cancers

**WDR45L Antibody (N-term) - Protocols**

Provided below are standard protocols that you may find useful for product applications.

- [Western Blot](#)
- [Blocking Peptides](#)
- [Dot Blot](#)
- [Immunohistochemistry](#)
- [Immunofluorescence](#)
- [Immunoprecipitation](#)
- [Flow Cytometry](#)
- [Cell Culture](#)

**WDR45L Antibody (N-term) - Images**



WDR45L Antibody (N-term) (Cat. #AP13252a) western blot analysis in HepG2 cell line lysates (35ug/lane). This demonstrates the WDR45L antibody detected the WDR45L protein (arrow).

**WDR45L Antibody (N-term) - Background**

This gene encodes a member of the WIPI or SVP1 family of WD40 repeat-containing proteins. The protein contains seven WD40 repeats that are thought to fold into a beta-propeller structure that mediates protein-protein interactions, and a conserved motif for interaction with phospholipids. The human genome contains several pseudogenes of this gene.

#### **WDR45L Antibody (N-term) - References**

Proikas-Cezanne, T., et al. Oncogene 23(58):9314-9325(2004) Jeffries, T.R., et al. Mol. Biol. Cell 15(6):2652-2663(2004) Venter, J.C., et al. Science 291(5507):1304-1351(2001)