

**NT5C3L Antibody (N-term)**  
**Affinity Purified Rabbit Polyclonal Antibody (Pab)**  
**Catalog # AP13283A**

**Specification**

---

**NT5C3L Antibody (N-term) - Product Information**

Application	WB, IHC-P,E
Primary Accession	<a href="#">O969T7</a>
Other Accession	<a href="#">NP_443167.3</a>
Reactivity	Human
Host	Rabbit
Clonality	Polyclonal
Isotype	Rabbit IgG
Calculated MW	34389
Antigen Region	70-98

**NT5C3L Antibody (N-term) - Additional Information**

**Gene ID** 115024

**Other Names**

7-methylguanosine phosphate-specific 5'-nucleotidase, 7-methylguanosine nucleotidase, Cytosolic 5'-nucleotidase 3B, Cytosolic 5'-nucleotidase III-like protein, cN-III-like protein, N(7)-methylguanylate 5'-phosphatase, NT5C3B, NT5C3L

**Target/Specificity**

This NT5C3L antibody is generated from rabbits immunized with a KLH conjugated synthetic peptide between 70-98 amino acids from the N-terminal region of human NT5C3L.

**Dilution**

WB~~1:1000  
IHC-P~~1:10~50

**Format**

Purified polyclonal antibody supplied in PBS with 0.09% (W/V) sodium azide. This antibody is purified through a protein A column, followed by peptide affinity purification.

**Storage**

Maintain refrigerated at 2-8°C for up to 2 weeks. For long term storage store at -20°C in small aliquots to prevent freeze-thaw cycles.

**Precautions**

NT5C3L Antibody (N-term) is for research use only and not for use in diagnostic or therapeutic procedures.

**NT5C3L Antibody (N-term) - Protein Information**

**Name** NT5C3B

## Synonyms NT5C3L

**Function** Specifically hydrolyzes 7-methylguanosine monophosphate (m(7)GMP) to 7-methylguanosine and inorganic phosphate (PubMed:[23223233](#), PubMed:[24603684](#)). The specific activity for m(7)GMP may protect cells against undesired salvage of m(7)GMP and its incorporation into nucleic acids (PubMed:[23223233](#)). Also has weak activity for CMP (PubMed:[23223233](#), PubMed:[24603684](#)). UMP and purine nucleotides are poor substrates (PubMed:[23223233](#)).

## Cellular Location

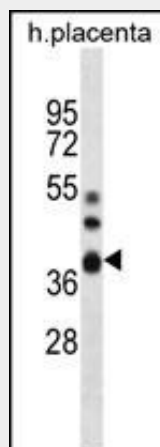
Cytoplasm.

## NT5C3L Antibody (N-term) - Protocols

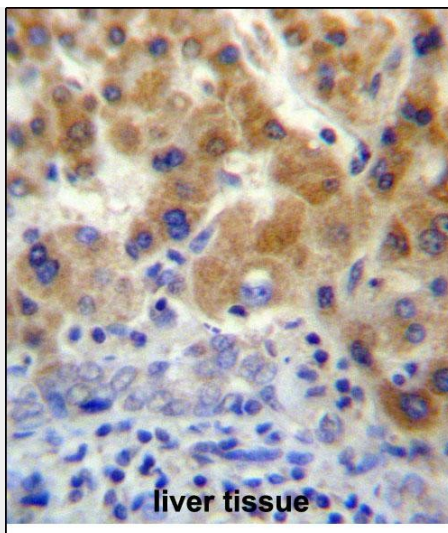
Provided below are standard protocols that you may find useful for product applications.

- [Western Blot](#)
- [Blocking Peptides](#)
- [Dot Blot](#)
- [Immunohistochemistry](#)
- [Immunofluorescence](#)
- [Immunoprecipitation](#)
- [Flow Cytometry](#)
- [Cell Culture](#)

## NT5C3L Antibody (N-term) - Images



NT5C3L Antibody (N-term) (Cat. #AP13283a) western blot analysis in human placenta tissue lysates (35ug/lane). This demonstrates the NT5C3L antibody detected the NT5C3L protein (arrow).



NT5C3L Antibody (N-term) (Cat. #AP13283a) immunohistochemistry analysis in formalin fixed and paraffin embedded human liver tissue followed by peroxidase conjugation of the secondary antibody and DAB staining. This data demonstrates the use of NT5C3L Antibody (N-term) for immunohistochemistry. Clinical relevance has not been evaluated.

#### **NT5C3L Antibody (N-term) - Background**

NT5C3L can act both as nucleotidase and as phosphotransferase (By similarity).