

**NLRC4 Antibody (N-term)**  
**Affinity Purified Rabbit Polyclonal Antibody (Pab)**  
**Catalog # AP13307a**

**Specification**

---

**NLRC4 Antibody (N-term) - Product Information**

Application	WB,E
Primary Accession	<a href="#">O9NPP4</a>
Other Accession	<a href="#">NP_067032.3</a>
Reactivity	Human
Host	Rabbit
Clonality	Polyclonal
Isotype	Rabbit IgG
Calculated MW	116159
Antigen Region	116-145

**NLRC4 Antibody (N-term) - Additional Information**

**Gene ID** 58484

**Other Names**

NLR family CARD domain-containing protein 4, CARD, LRR, and NACHT-containing protein, Clan protein, Caspase recruitment domain-containing protein 12, Ice protease-activating factor, Ipaf, NLRC4, CARD12, CLAN, CLAN1, IPAF

**Target/Specificity**

This NLRC4 antibody is generated from rabbits immunized with a KLH conjugated synthetic peptide between 116-145 amino acids from the N-terminal region of human NLRC4.

**Dilution**

WB~~1:1000

E~~Use at an assay dependent concentration.

**Format**

Purified polyclonal antibody supplied in PBS with 0.09% (W/V) sodium azide. This antibody is purified through a protein A column, followed by peptide affinity purification.

**Storage**

Maintain refrigerated at 2-8°C for up to 2 weeks. For long term storage store at -20°C in small aliquots to prevent freeze-thaw cycles.

**Precautions**

NLRC4 Antibody (N-term) is for research use only and not for use in diagnostic or therapeutic procedures.

**NLRC4 Antibody (N-term) - Protein Information**

**Name** NLRC4

**Function** Key component of inflammasomes that indirectly senses specific proteins from pathogenic bacteria and fungi and responds by assembling an inflammasome complex that promotes caspase-1 activation, cytokine production and macrophage pyroptosis (PubMed:[15107016](#)). The NLRC4 inflammasome is activated as part of the innate immune response to a range of intracellular bacteria (By similarity).

#### **Cellular Location**

Cytoplasm. Cytoplasm, cytosol {ECO:0000250|UniProtKB:Q3UP24}. Inflammasome

#### **Tissue Location**

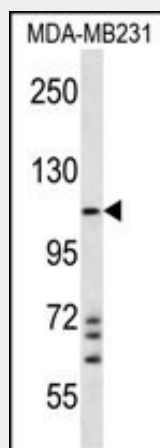
Isoform 2 is expressed ubiquitously, although highly expressed in lung and spleen. Isoform 1 is highly expressed in lung, followed by leukocytes especially monocytes, lymph node, colon, brain, prostate, placenta, spleen, bone marrow and fetal liver. Isoform 4 is only detected in brain

### **NLRC4 Antibody (N-term) - Protocols**

Provided below are standard protocols that you may find useful for product applications.

- [Western Blot](#)
- [Blocking Peptides](#)
- [Dot Blot](#)
- [Immunohistochemistry](#)
- [Immunofluorescence](#)
- [Immunoprecipitation](#)
- [Flow Cytometry](#)
- [Cell Culture](#)

### **NLRC4 Antibody (N-term) - Images**



NLRC4 Antibody (N-term) (Cat. #AP13307a) western blot analysis in MDA-MB231 cell line lysates (35ug/lane). This demonstrates the NLRC4 antibody detected the NLRC4 protein (arrow).

### **NLRC4 Antibody (N-term) - Background**

In *C. elegans*, Ced4 binds and activates Ced3, an apoptotic initiator caspase, via caspase-associated recruitment domains (CARDs). Human Ced4 homologs include APAF1 (MIM 602233), NOD1/CARD4 (MIM 605980), and NOD2/CARD15 (MIM 605956). These proteins have at least 1 N-terminal CARD domain followed by a centrally located nucleotide-binding domain (NBD or NACHT) and a C-terminal

regulatory domain, found only in mammals, that contains either WD40 repeats or leucine-rich repeats (LRRs). CARD12 is a member of the Ced4 family and can induce apoptosis.

#### **NLRC4 Antibody (N-term) - References**

Miao, E.A., et al. J. Clin. Immunol. 30(4):502-506(2010)  
Vinzing, M., et al. J. Immunol. 180(10):6808-6815(2008)  
Macaluso, F., et al. Exp. Dermatol. 16(8):692-698(2007)  
Bruey, J.M., et al. Cell 129(1):45-56(2007)  
Thalappilly, S., et al. FEBS J. 273(12):2766-2778(2006)