

TASP1 Antibody (C-term)
Purified Rabbit Polyclonal Antibody (Pab)
Catalog # AP1330b**Specification**

TASP1 Antibody (C-term) - Product Information

Application	WB, IHC-P,E
Primary Accession	Q9H6P5
Other Accession	Q8R1G1
Reactivity	Human, Mouse
Host	Rabbit
Clonality	Polyclonal
Isotype	Rabbit IgG
Calculated MW	44455
Antigen Region	364-395

TASP1 Antibody (C-term) - Additional Information**Gene ID** 55617**Other Names**

Threonine aspartase 1, Taspase-1, 3425-, Threonine aspartase subunit alpha, Threonine aspartase subunit beta, TASP1, C20orf13

Target/Specificity

This TASP1 antibody is generated from rabbits immunized with a KLH conjugated synthetic peptide between 364-395 amino acids from the C-terminal region of human TASP1.

Dilution

WB~~1:1000

IHC-P~~1:10~50

Format

Purified polyclonal antibody supplied in PBS with 0.09% (W/V) sodium azide. This antibody is prepared by Saturated Ammonium Sulfate (SAS) precipitation followed by dialysis against PBS.

Storage

Maintain refrigerated at 2-8°C for up to 2 weeks. For long term storage store at -20°C in small aliquots to prevent freeze-thaw cycles.

Precautions

TASP1 Antibody (C-term) is for research use only and not for use in diagnostic or therapeutic procedures.

TASP1 Antibody (C-term) - Protein Information**Name** TASP1

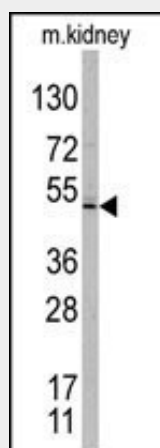
Synonyms C20orf13

Function Protease responsible for KMT2A/MLL1 processing and activation (PubMed:[14636557](#)). It also activates KMT2D/MLL2 (By similarity). Through substrate activation, it controls the expression of HOXA genes, and the expression of key cell cycle regulators including CCNA1, CCNB1, CCNE1 and CDKN2A (By similarity) (PubMed:[14636557](#)).

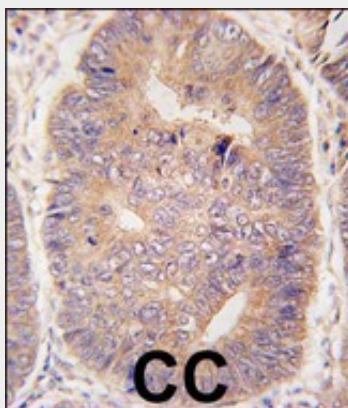
TASP1 Antibody (C-term) - Protocols

Provided below are standard protocols that you may find useful for product applications.

- [Western Blot](#)
- [Blocking Peptides](#)
- [Dot Blot](#)
- [Immunohistochemistry](#)
- [Immunofluorescence](#)
- [Immunoprecipitation](#)
- [Flow Cytometry](#)
- [Cell Culture](#)

TASP1 Antibody (C-term) - Images

Western blot analysis of TASP1 C-term polyclonal antibody (Cat.# AP1330b) in mouse kidney tissue lysates. TASP1 (arrow) was detected using the purified Pab .



Formalin-fixed and paraffin-embedded human colon carcinoma tissue reacted with hTASP1-C-term (Cat.#AP1330b), which was peroxidase-conjugated to the secondary antibody,

followed by DAB staining. This data demonstrates the use of this antibody for immunohistochemistry; clinical relevance has not been evaluated.

TASP1 Antibody (C-term) - Background

TASP1 is an endopeptidase that cleaves specific substrates following aspartate residues. The encoded protein undergoes posttranslational autoproteolytic processing to generate alpha and beta subunits, which reassemble into the active alpha2-beta2 heterotetramer. It is required to cleave MLL, a protein required for the maintenance of HOX gene expression, and TFIIA, a basal transcription factor.

TASP1 Antibody (C-term) - References

Hsieh, J.J., et al., Cell 115(3):293-303 (2003).