

NLE1 Antibody (C-term)
Affinity Purified Rabbit Polyclonal Antibody (Pab)
Catalog # AP13317b**Specification**

NLE1 Antibody (C-term) - Product Information

Application	WB,E
Primary Accession	O9NVX2
Other Accession	NP_060566.2 , NP_001014445.1
Reactivity	Human
Host	Rabbit
Clonality	Polyclonal
Isotype	Rabbit IgG
Calculated MW	53320
Antigen Region	343-372

NLE1 Antibody (C-term) - Additional Information**Gene ID** 54475**Other Names**

Notchless protein homolog 1, NLE1

Target/Specificity

This NLE1 antibody is generated from rabbits immunized with a KLH conjugated synthetic peptide between 343-372 amino acids from the C-terminal region of human NLE1.

Dilution

WB~~1:1000

Format

Purified polyclonal antibody supplied in PBS with 0.09% (W/V) sodium azide. This antibody is purified through a protein A column, followed by peptide affinity purification.

Storage

Maintain refrigerated at 2-8°C for up to 2 weeks. For long term storage store at -20°C in small aliquots to prevent freeze-thaw cycles.

Precautions

NLE1 Antibody (C-term) is for research use only and not for use in diagnostic or therapeutic procedures.

NLE1 Antibody (C-term) - Protein Information**Name** NLE1

Function Plays a role in regulating Notch activity. Plays a role in regulating the expression of CDKN1A and several members of the Wnt pathway, probably via its effects on Notch activity.

Required during embryogenesis for inner mass cell survival (By similarity).

Cellular Location

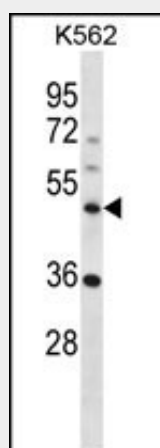
Nucleus, nucleolus {ECO:0000269|PubMed:12429849, ECO:0000269|Ref.5}

NLE1 Antibody (C-term) - Protocols

Provided below are standard protocols that you may find useful for product applications.

- [Western Blot](#)
- [Blocking Peptides](#)
- [Dot Blot](#)
- [Immunohistochemistry](#)
- [Immunofluorescence](#)
- [Immunoprecipitation](#)
- [Flow Cytometry](#)
- [Cell Culture](#)

NLE1 Antibody (C-term) - Images



NLE1 Antibody (C-term) (Cat. #AP13317b) western blot analysis in K562 cell line lysates (35ug/lane). This demonstrates the NLE1 antibody detected the NLE1 protein (arrow).

NLE1 Antibody (C-term) - Background

NLE1 (Notchless protein homolog 1) contains 8 WD repeats and may be involved in the Notch signaling pathway.

NLE1 Antibody (C-term) - References

Matsuoka, S., et al. Science 316(5828):1160-1166(2007)
Scherl, A., et al. Mol. Biol. Cell 13(11):4100-4109(2002)
Stanchi, F., et al. Yeast 18(1):69-80(2001)