

KCTD3 Antibody (C-term)
Affinity Purified Rabbit Polyclonal Antibody (Pab)
Catalog # AP13318b

Specification

KCTD3 Antibody (C-term) - Product Information

Application	IHC-P, WB,E
Primary Accession	O9Y597
Other Accession	NP_057205.2
Reactivity	Human
Host	Rabbit
Clonality	Polyclonal
Isotype	Rabbit IgG
Calculated MW	88984
Antigen Region	725-754

KCTD3 Antibody (C-term) - Additional Information

Gene ID 51133

Other Names

BTB/POZ domain-containing protein KCTD3, Renal carcinoma antigen NY-REN-45, KCTD3

Target/Specificity

This KCTD3 antibody is generated from rabbits immunized with a KLH conjugated synthetic peptide between 725-754 amino acids from the C-terminal region of human KCTD3.

Dilution

IHC-P~~1:10~50

WB~~1:1000

E~~Use at an assay dependent concentration.

Format

Purified polyclonal antibody supplied in PBS with 0.09% (W/V) sodium azide. This antibody is purified through a protein A column, followed by peptide affinity purification.

Storage

Maintain refrigerated at 2-8°C for up to 2 weeks. For long term storage store at -20°C in small aliquots to prevent freeze-thaw cycles.

Precautions

KCTD3 Antibody (C-term) is for research use only and not for use in diagnostic or therapeutic procedures.

KCTD3 Antibody (C-term) - Protein Information

Name KCTD3

Function Accessory subunit of potassium/sodium hyperpolarization- activated cyclic nucleotide-gated channel 3 (HCN3) up-regulating its cell-surface expression and current density without affecting its voltage dependence and kinetics.

Cellular Location

Cell membrane {ECO:0000250|UniProtKB:Q8BFX3}.

Tissue Location

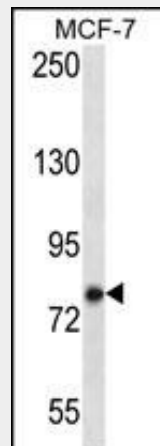
Broadly expressed in normal tissues.

KCTD3 Antibody (C-term) - Protocols

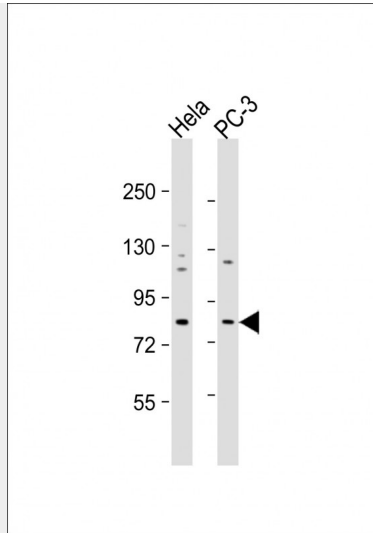
Provided below are standard protocols that you may find useful for product applications.

- [Western Blot](#)
- [Blocking Peptides](#)
- [Dot Blot](#)
- [Immunohistochemistry](#)
- [Immunofluorescence](#)
- [Immunoprecipitation](#)
- [Flow Cytometry](#)
- [Cell Culture](#)

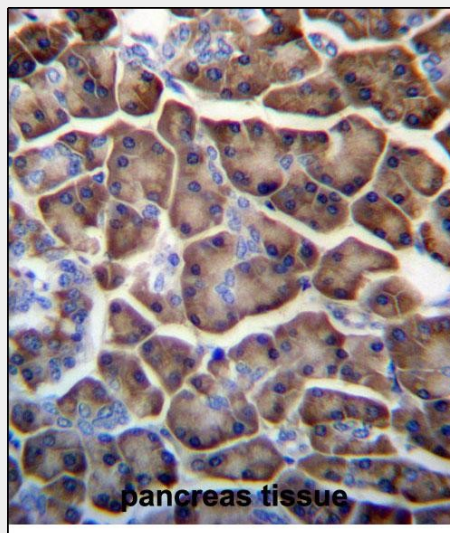
KCTD3 Antibody (C-term) - Images



KCTD3 Antibody (C-term) (Cat. #AP13318b) western blot analysis in MCF-7 cell line lysates (35ug/lane). This demonstrates the KCTD3 antibody detected the KCTD3 protein (arrow).



All lanes : Anti-KCTD3 Antibody (C-term) at 1:1000 dilution Lane 1: HeLa whole cell lysate Lane 2: PC-3 whole cell lysate Lysates/proteins at 20 µg per lane. Secondary Goat Anti-Rabbit IgG, (H+L), Peroxidase conjugated at 1/10000 dilution. Predicted band size : 89 kDa Blocking/Dilution buffer: 5% NFDm/TBST.



KCTD3 Antibody (C-term) (Cat. #AP13318b) immunohistochemistry analysis in formalin fixed and paraffin embedded human pancreas tissue followed by peroxidase conjugation of the secondary antibody and DAB staining. This data demonstrates the use of KCTD3 Antibody (C-term) for immunohistochemistry. Clinical relevance has not been evaluated.

KCTD3 Antibody (C-term) - Background

KCTD3 belongs to the KCTD3 family. It contains one BTB (POZ) domain and five WD repeats. The exact function of KCTD3 is not known. There are three named isoforms.

KCTD3 Antibody (C-term) - References

Lehner, B., et al. Genome Res. 14(7):1315-1323(2004)
Scanlan, M.J., et al. Int. J. Cancer 83(4):456-464(1999)