

NETO2 Antibody (N-term)
Affinity Purified Rabbit Polyclonal Antibody (Pab)
Catalog # AP13322A

Specification

NETO2 Antibody (N-term) - Product Information

Application	WB, IHC-P, FC,E
Primary Accession	Q8NC67
Other Accession	C6K2K4 , Q8BNJ6 , NP_060562.3
Reactivity	Human
Predicted	Mouse, Rat
Host	Rabbit
Clonality	Polyclonal
Isotype	Rabbit IgG
Antigen Region	174-203

NETO2 Antibody (N-term) - Additional Information

Gene ID 81831

Other Names

Neuropilin and tolloid-like protein 2, Brain-specific transmembrane protein containing 2 CUB and 1 LDL-receptor class A domains protein 2, NETO2, BTCL2

Target/Specificity

This NETO2 antibody is generated from rabbits immunized with a KLH conjugated synthetic peptide between 174-203 amino acids from the N-terminal region of human NETO2.

Dilution

WB~~1:2000
IHC-P~~1:10~50
FC~~1:25

Format

Purified polyclonal antibody supplied in PBS with 0.09% (W/V) sodium azide. This antibody is purified through a protein A column, followed by peptide affinity purification.

Storage

Maintain refrigerated at 2-8°C for up to 2 weeks. For long term storage store at -20°C in small aliquots to prevent freeze-thaw cycles.

Precautions

NETO2 Antibody (N-term) is for research use only and not for use in diagnostic or therapeutic procedures.

NETO2 Antibody (N-term) - Protein Information

Name NETO2

Synonyms BTCL2

Function Accessory subunit of neuronal kainate-sensitive glutamate receptors, GRIK2 and GRIK3. Increases kainate-receptor channel activity, slowing the decay kinetics of the receptors, without affecting their expression at the cell surface, and increasing the open probability of the receptor channels. Modulates the agonist sensitivity of kainate receptors. Slows the decay of kainate receptor-mediated excitatory postsynaptic currents (EPSCs), thus directly influencing synaptic transmission (By similarity).

Cellular Location

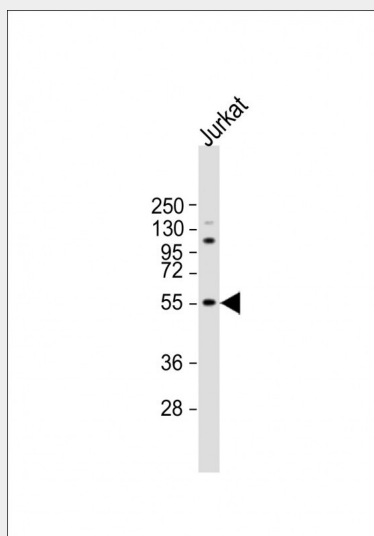
Membrane; Single-pass type I membrane protein

NETO2 Antibody (N-term) - Protocols

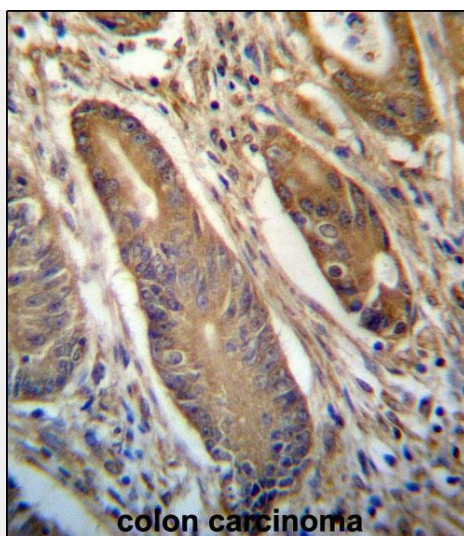
Provided below are standard protocols that you may find useful for product applications.

- [Western Blot](#)
- [Blocking Peptides](#)
- [Dot Blot](#)
- [Immunohistochemistry](#)
- [Immunofluorescence](#)
- [Immunoprecipitation](#)
- [Flow Cytometry](#)
- [Cell Culture](#)

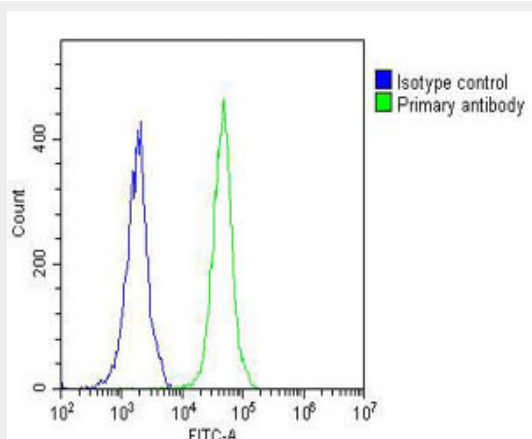
NETO2 Antibody (N-term) - Images



Anti-NETO2 Antibody (N-term) at 1:2000 dilution + Jurkat whole cell lysate Lysates/proteins at 20 µg per lane. Secondary Goat Anti-Rabbit IgG, (H+L), Peroxidase conjugated at 1/10000 dilution. Predicted band size : 59 kDa Blocking/Dilution buffer: 5% NFDM/TBST.



NETO2 Antibody (N-term) (Cat. #AP13322a) immunohistochemistry analysis in formalin fixed and paraffin embedded human colon carcinoma followed by peroxidase conjugation of the secondary antibody and DAB staining. This data demonstrates the use of NETO2 Antibody (N-term) for immunohistochemistry. Clinical relevance has not been evaluated.



Overlay histogram showing Jurkat cells stained with AP13322a (green line). The cells were fixed with 2% paraformaldehyde (10 min) and then permeabilized with 90% methanol for 10 min. The cells were then incubated in 2% bovine serum albumin to block non-specific protein-protein interactions followed by the antibody (AP13322a, 1:25 dilution) for 60 min at 37°C. The secondary antibody used was Goat-Anti-Rabbit IgG, DyLight® 488 Conjugated Highly Cross-Adsorbed (OH191631) at 1/200 dilution for 40 min at 37°C. Isotype control antibody (blue line) was rabbit IgG (1 µg/1x10⁶ cells) used under the same conditions. Acquisition of >10,000 events was performed.

NETO2 Antibody (N-term) - Background

This gene encodes a predicted transmembrane protein containing two extracellular CUB domains followed by a low-density lipoprotein class A (LDLa) domain. It also has an intracellular FXNPXY-like motif, which has been shown in other proteins to be essential for the internalization of clathrin coated pits during endocytosis. Alternatively spliced transcript variants have been observed, but they have not been fully characterized. [provided by RefSeq].

NETO2 Antibody (N-term) - References

Zhang, Z., et al. Protein Sci. 13(10):2819-2824(2004)
Clark, H.F., et al. Genome Res. 13(10):2265-2270(2003)
Stohr, H., et al. Gene 286(2):223-231(2002)