

MARCH4 Antibody (C-term)
Affinity Purified Rabbit Polyclonal Antibody (Pab)
Catalog # AP13332b

Specification

MARCH4 Antibody (C-term) - Product Information

Application	WB,E
Primary Accession	O9P2E8
Other Accession	NP_065865.1
Reactivity	Human
Host	Rabbit
Clonality	Polyclonal
Isotype	Rabbit IgG
Calculated MW	45528
Antigen Region	302-331

MARCH4 Antibody (C-term) - Additional Information

Gene ID 57574

Other Names

E3 ubiquitin-protein ligase MARCH4, 632-, Membrane-associated RING finger protein 4, Membrane-associated RING-CH protein IV, MARCH-IV, RING finger protein 174, MARCH4, KIAA1399, RNF174

Target/Specificity

This MARCH4 antibody is generated from rabbits immunized with a KLH conjugated synthetic peptide between 302-331 amino acids from the C-terminal region of human MARCH4.

Dilution

WB~~1:1000

E~~Use at an assay dependent concentration.

Format

Purified polyclonal antibody supplied in PBS with 0.09% (W/V) sodium azide. This antibody is purified through a protein A column, followed by peptide affinity purification.

Storage

Maintain refrigerated at 2-8°C for up to 2 weeks. For long term storage store at -20°C in small aliquots to prevent freeze-thaw cycles.

Precautions

MARCH4 Antibody (C-term) is for research use only and not for use in diagnostic or therapeutic procedures.

MARCH4 Antibody (C-term) - Protein Information

Name MARCHF4 ([HGNC:29269](#))

Function E3 ubiquitin-protein ligase that may mediate ubiquitination of MHC-I and CD4, and promote their subsequent endocytosis and sorting to lysosomes via multivesicular bodies. E3 ubiquitin ligases accept ubiquitin from an E2 ubiquitin-conjugating enzyme in the form of a thioester and then directly transfer the ubiquitin to targeted substrates.

Cellular Location

Golgi apparatus membrane; Multi-pass membrane protein

Tissue Location

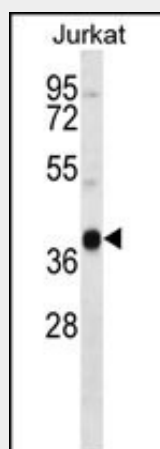
Expressed in brain and placenta.

MARCH4 Antibody (C-term) - Protocols

Provided below are standard protocols that you may find useful for product applications.

- [Western Blot](#)
- [Blocking Peptides](#)
- [Dot Blot](#)
- [Immunohistochemistry](#)
- [Immunofluorescence](#)
- [Immunoprecipitation](#)
- [Flow Cytometry](#)
- [Cell Culture](#)

MARCH4 Antibody (C-term) - Images



MARCH4 Antibody (C-term) (Cat. #AP13332b) western blot analysis in Jurkat cell line lysates (35ug/lane). This demonstrates the MARCH4 antibody detected the MARCH4 protein (arrow).

MARCH4 Antibody (C-term) - Background

MARCH4 is a member of the MARCH family of membrane-bound E3 ubiquitin ligases (EC 6.3.2.19). MARCH enzymes add ubiquitin (see MIM 191339) to target lysines in substrate proteins, thereby signaling their vesicular transport between membrane compartments. MARCH4 reduces surface accumulation of several membrane glycoproteins by directing them to the endosomal compartment (Bartee et al., 2004 [PubMed 14722266]).

MARCH4 Antibody (C-term) - References

Bartee, E., et al. J. Virol. 78(3):1109-1120(2004)