

ZDHHC20 Antibody (N-term)
Affinity Purified Rabbit Polyclonal Antibody (Pab)
Catalog # AP13355a

Specification

ZDHHC20 Antibody (N-term) - Product Information

Application	IHC-P, WB,E
Primary Accession	Q5W0Z9
Reactivity	Human
Host	Rabbit
Clonality	Polyclonal
Isotype	Rabbit IgG
Calculated MW	42278
Antigen Region	26-54

ZDHHC20 Antibody (N-term) - Additional Information

Gene ID 253832

Other Names

Probable palmitoyltransferase ZDHHC20, Zinc finger DHHC domain-containing protein 20, DHHC-20, ZDHHC20

Target/Specificity

This ZDHHC20 antibody is generated from rabbits immunized with a KLH conjugated synthetic peptide between 26-54 amino acids from the N-terminal region of human ZDHHC20.

Dilution

IHC-P~~1:10~50

WB~~1:1000

E~~Use at an assay dependent concentration.

Format

Purified polyclonal antibody supplied in PBS with 0.09% (W/V) sodium azide. This antibody is purified through a protein A column, followed by peptide affinity purification.

Storage

Maintain refrigerated at 2-8°C for up to 2 weeks. For long term storage store at -20°C in small aliquots to prevent freeze-thaw cycles.

Precautions

ZDHHC20 Antibody (N-term) is for research use only and not for use in diagnostic or therapeutic procedures.

ZDHHC20 Antibody (N-term) - Protein Information

Name ZDHHC20 ([HGNC:20749](#))

Function Palmitoyltransferase that could catalyze the addition of palmitate onto various protein substrates (PubMed:[27153536](#), PubMed:[29326245](#), PubMed:[33219126](#)). Catalyzes palmitoylation of Cys residues in the cytoplasmic C-terminus of EGFR, and modulates the duration of EGFR signaling by modulating palmitoylation-dependent EGFR internalization and degradation (PubMed:[27153536](#)). Has a preference for acyl-CoA with C16 fatty acid chains (PubMed:[29326245](#)). Can also utilize acyl-CoA with C14 and C18 fatty acid chains (PubMed:[29326245](#)). May palmitoylate CALHM1 subunit of gustatory voltage-gated ion channels and modulate channel gating and kinetics.

Cellular Location

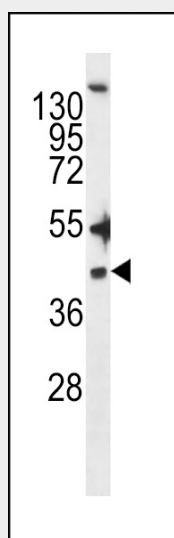
Golgi apparatus membrane; Multi-pass membrane protein. Cell membrane; Multi-pass membrane protein. Cytoplasm, perinuclear region. Endoplasmic reticulum membrane; Multi-pass membrane protein. Endoplasmic reticulum-Golgi intermediate compartment membrane; Multi-pass membrane protein

ZDHHC20 Antibody (N-term) - Protocols

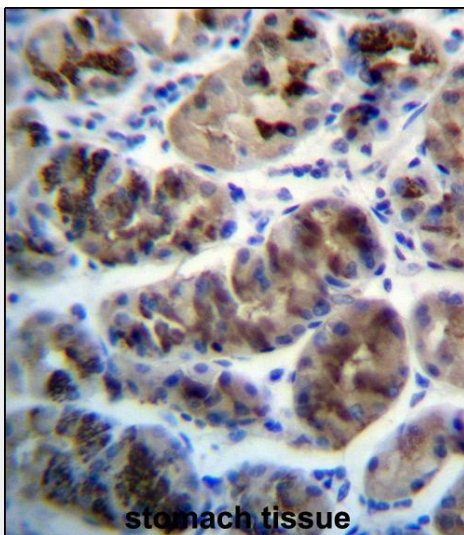
Provided below are standard protocols that you may find useful for product applications.

- [Western Blot](#)
- [Blocking Peptides](#)
- [Dot Blot](#)
- [Immunohistochemistry](#)
- [Immunofluorescence](#)
- [Immunoprecipitation](#)
- [Flow Cytometry](#)
- [Cell Culture](#)

ZDHHC20 Antibody (N-term) - Images



ZDHHC20 Antibody (N-term) (Cat. #AP13355a) western blot analysis in NCI-H460 cell line lysates (35ug/lane). This demonstrates the ZDHHC20 antibody detected the ZDHHC20 protein (arrow).



ZDHHC20 Antibody (N-term) (Cat. #AP13355a) immunohistochemistry analysis in formalin fixed and paraffin embedded human stomach tissue followed by peroxidase conjugation of the secondary antibody and DAB staining. This data demonstrates the use of ZDHHC20 Antibody (N-term) for immunohistochemistry. Clinical relevance has not been evaluated.

ZDHHC20 Antibody (N-term) - Background

The specific function of this protein remains unknown.