

WDR25 Antibody (C-term)
Affinity Purified Rabbit Polyclonal Antibody (Pab)
Catalog # AP13361b**Specification**

WDR25 Antibody (C-term) - Product Information

Application	IHC-P, WB,E
Primary Accession	Q64LD2
Other Accession	E9Q349 , NP_001154948.1
Reactivity	Human
Predicted	Mouse
Host	Rabbit
Clonality	Polyclonal
Isotype	Rabbit IgG
Calculated MW	60161
Antigen Region	444-473

WDR25 Antibody (C-term) - Additional Information**Gene ID** 79446**Other Names**

WD repeat-containing protein 25, WDR25

Target/Specificity

This WDR25 antibody is generated from rabbits immunized with a KLH conjugated synthetic peptide between 444-473 amino acids from the C-terminal region of human WDR25.

Dilution

IHC-P~~1:10~50

WB~~1:1000

E~~Use at an assay dependent concentration.

Format

Purified polyclonal antibody supplied in PBS with 0.09% (W/V) sodium azide. This antibody is purified through a protein A column, followed by peptide affinity purification.

Storage

Maintain refrigerated at 2-8°C for up to 2 weeks. For long term storage store at -20°C in small aliquots to prevent freeze-thaw cycles.

Precautions

WDR25 Antibody (C-term) is for research use only and not for use in diagnostic or therapeutic procedures.

WDR25 Antibody (C-term) - Protein Information**Name** WDR25 ([HGNC:21064](#))

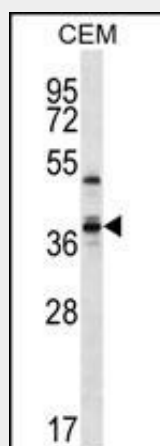
Tissue Location

Expressed in heart, muscle, testis, ovary, uterus and prostate.

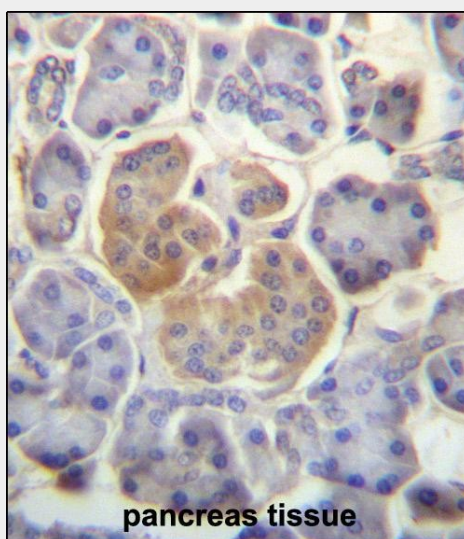
WDR25 Antibody (C-term) - Protocols

Provided below are standard protocols that you may find useful for product applications.

- [Western Blot](#)
- [Blocking Peptides](#)
- [Dot Blot](#)
- [Immunohistochemistry](#)
- [Immunofluorescence](#)
- [Immunoprecipitation](#)
- [Flow Cytometry](#)
- [Cell Culture](#)

WDR25 Antibody (C-term) - Images

WDR25 Antibody (C-term) (Cat. #AP13361b) western blot analysis in CEM cell line lysates (35ug/lane). This demonstrates the WDR25 antibody detected the WDR25 protein (arrow).



WDR25 Antibody (C-term) (Cat. #AP13361b) immunohistochemistry analysis in formalin fixed and

paraffin embedded human pancreas tissue followed by peroxidase conjugation of the secondary antibody and DAB staining. This data demonstrates the use of WDR25 Antibody (C-term) for immunohistochemistry. Clinical relevance has not been evaluated.

WDR25 Antibody (C-term) - Background

The specific function of this protein remains unknown.

WDR25 Antibody (C-term) - References

Jin, F., et al. Biochem. Genet. 42 (11-12), 419-427 (2004) :